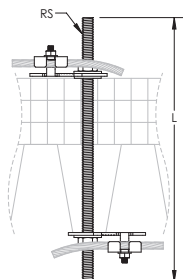


Through Wall/Roof Assembly, Bonding Lug to Bonding Lug – LPC622



- Allows for lightning protection conductors to be concealed in ceiling or walls



Part Number	LPC622
Conductor Size, UL	Class 1 - Class 2 (4/0 Max)
Material	Copper Stainless Steel 18-8 (EN 1.4305)
Connection Material	Copper - Copper
Rod Length (L)	6"
Rod Size (RS)	1/2"
Unit Weight	1.5 lb
Certifications	UL
Standard Packaging Quantity	1 pc
UPC	78285643052

Always consult the roof manufacturer or owner for proper flashing materials.

UL, UR, cUL, cUR, cULus and cURus are registered certification marks of UL LLC.

WARNING

nVent products shall be installed and used only as indicated in nVent's product instruction sheets and training materials. Instruction sheets are available at www.erico.com and from your nVent customer service representative. Improper installation, misuse, misapplication or other failure to completely follow nVent's instructions and warnings may cause product malfunction, property damage, serious bodily injury and death and/or void your warranty.

© 2021 nVent All rights reserved

nVent, nVent CADDY, nVent ERICO, nVent ERIFLEX and nVent LENTON are owned by nVent or its global affiliates.

All other trademarks are the property of their respective owners. nVent reserves the right to change specifications without prior notice.