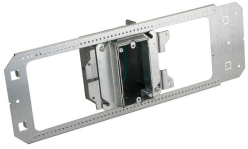
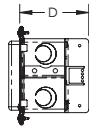
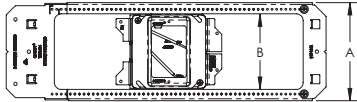


CADDY ALL-IN-ONE Between-Stud With Adjustable Mud Ring, Single Box – A1BFV1G



- Adjustable mud ring accommodates various thicknesses of drywall
- Can be adjusted after the installation of drywall
- Box remains fixed in place when mud ring is removed
- Pre-bent tabs on support bracket help to quickly square assembly to stud
- Center marks provide easy height positioning
- Includes multiple 1/2" and 3/4" knockouts on each side of the box



Part Number	A1BFV1G
Material	Steel
Finish	Pregalvanized
Knockout Sizes	{8} 1/2", 3/4" {3} 1/2"
Gang	1
Ground Wire Included	Yes
Box Volume	32.8 in ³
Drywall Thickness	3/4" – 1 1/2"
Stud Spacing	16" – 24"
Depth (D)	3 5/8"
A	5 3/4"
B	4 1/8"
Certifications	cULus
Standard Packaging Quantity	5 pc
UPC	78285693531

Ground wire pigtail is 10".

24" stud spacing requires use of three mounting screws.

Use only with CADDY ALL-IN-ONE box assemblies.



UL, UR, cUL, cUR, cULus and cURus are registered certification marks of UL LLC.

WARNING

Pentair products shall be installed and used only as indicated in Pentair's product instruction sheets and training materials. Instruction sheets are available at erico.pentair.com and from your Pentair customer service representative. Improper installation, misuse, misapplication or other failure to completely follow Pentair's instructions and warnings may cause product malfunction, property damage, serious bodily injury and death and/or void your warranty.

© 2017 Pentair All rights reserved

Pentair, CADDY, CADWELD, CRITEC, ERICO, ERIFLEX, ERITECH and LENTON are owned by Pentair or its global affiliates.

All other trademarks are the property of their respective owners. Pentair reserves the right to change specifications without prior notice.

