

**120V TRACK ACCESSORIES**

**"H" Track Canopy Adapter/ I connectors**

**3 Wire Monopoint Canopy Adapter**

MODEL	FINISHES			
HMP	BK	WT	BN	DB

Example (Model-Finish): HMP-WT

**Description** Used to mount a single 3-wire "H" series track fixture over a junction box. Looks best with line volt track heads. For low volt models see section on "Surface Mount" track heads.

**Dimensions** 5 3/8" x 5 3/8"

**Finish** BK - Black  
WT - White  
BN – Brushed Nickel  
DB – Dark Bronze

**Listing** UL & CUL Listed. 5 year WAC Lighting product warranty.



**3 Wire "I" Connector**

MODEL	FINISHES			
HI	BK	WT	BN	DB

Example (Model-Finish): HI-BK

**Description** Connects two "HT" tracks in a straight line.

**Dimensions** 3 1/8"

**Finish** BK - Black  
WT - White  
BN – Brushed Nickel  
DB – Dark Bronze

**Listing** UL & CUL Listed. 5 year WAC Lighting product warranty.



**3 Wire "I" Dead End Straight Line Connector**

MODEL	FINISHES			
HI-DEC	BK	WT	BN	DB

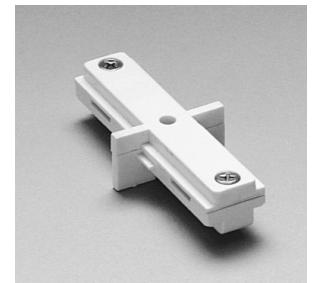
Example (Model-Finish): HI-DEC-BN

**Description** Connects two "HT" tracks in a straight line, but does not allow power to pass through.

**Dimensions** 3 1/8"

**Finish** BK - Black  
WT - White  
BN – Brushed Nickel  
DB – Dark Bronze

**Listing** UL & CUL Listed. 5 year WAC Lighting product warranty.



**3 Wire "I" Straight Line Power Connector**

MODEL	FINISHES			
HI-PWR	BK	WT	BN	DB

Example (Model-Finish): HI-PWR-WT

**Description** Connects two "HT" tracks in a straight line, and is a power entry point. Accepts wires from above the ceiling, with knock out for trade size connector.:

**Dimensions** 7"

**Finish** BK - Black  
WT - White  
BN – Brushed Nickel  
DB – Dark Bronze

**Listing** UL & CUL Listed. 5 year WAC Lighting product warranty.



**120V TRACK ACCESSORIES**

**“J” Track Canopy Adapter/ I connectors**

<b>Monopoint Canopy Adapter</b>			
MODEL	FINISHES		
JMP	BK	WT	BN

Example (Model-Finish): JMP-WT

**Description** Used to mount a single “J” series track fixture over a junction box. Looks best with line volt track heads. For low volt models see section on “Surface Mount” track heads.

**Dimensions** 4 3/4" W

**Finish** BK - Black  
WT - White  
BN – Brushed Nickel

**Listing** UL & CUL Listed. 5 year WAC Lighting product warranty.



<b>Wide 2-Wire “I” Connector</b>			
MODEL	FINISHES		
JI	BK	WT	BN

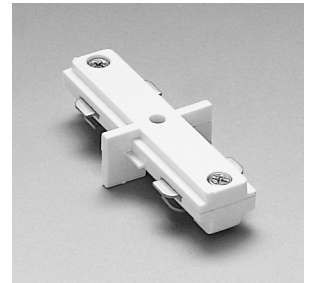
Example (Model-Finish): JI-DB

**Description** Connects two “JT” tracks in a straight line.

**Dimensions** 3"

**Finish** BK - Black  
WT - White  
BN – Brushed Nickel

**Listing** UL & CUL Listed. 5 year WAC Lighting product warranty.



<b>Wide 2-Wire “I” Dead End Straight Line Connector</b>			
MODEL	FINISHES		
JI-DEC	BK	WT	BN

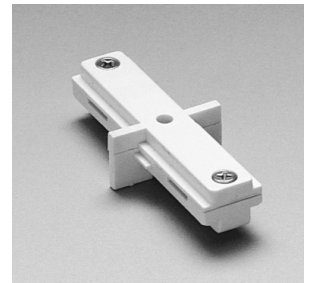
Example (Model-Finish): JI-DEC-BN

**Description** Connects two “JT” tracks in a straight line, but does not allow power to pass through.:

**Dimensions** 3"

**Finish** BK - Black  
WT - White  
BN – Brushed Nickel

**Listing** UL & CUL Listed. 5 year WAC Lighting product warranty.



<b>Wide 2-Wire “I” Straight Line Power Connector</b>			
MODEL	FINISHES		
JI-PWR	BK	WT	BN

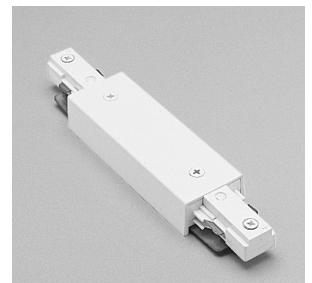
Example (Model-Finish): JI-PWR-WT

**Description** Connects two “JT” tracks in a straight line, and is a power entry point. Accepts wires from above the ceiling, with knock out for trade size connector.

**Dimensions** 7 1/8"

**Finish** BK - Black  
WT - White  
BN – Brushed Nickel

**Listing** UL & CUL Listed. 5 year WAC Lighting product warranty.



**120V TRACK ACCESSORIES**

**“L” Track Canopy Adapter/ I connectors**

**2 Wire Monopoint Canopy Adapter**

MODEL	FINISHES		
<b>LMP</b>	<b>BK</b>	<b>WT</b>	<b>BN</b>

Example (Model-Finish): LMP-DB

**Description** Used to mount a single “L” series track fixture over a junction box. Looks best with line volt track heads. For low volt models see section on “Surface Mount” track heads.

**Dimension** 4 3/8” W

**Finish** BK - Black  
WT - White  
BN – Brushed Nickel

**Listing** UL & CUL Listed. 5 year WAC Lighting product warranty.



**2 Wire “I” Connector**

MODEL	FINISHES		
<b>LI</b>	<b>BK</b>	<b>WT</b>	<b>BN</b>

Example (Model-Finish): LI-BK

**Description** Connects two “LT” tracks in a straight line.

**Dimension** 3”

**Finish** BK - Black  
WT - White  
BN – Brushed Nickel

**Listing** UL & CUL Listed. 5 year WAC Lighting product warranty.



**2 Wire “I” Dead End Straight Line Connector**

MODEL	FINISHES		
<b>LI-DEC</b>	<b>BK</b>	<b>WT</b>	<b>BN</b>

Example (Model-Finish): LI-DEC-BN

**Description** Connects two “LT” tracks in a straight line, but does not allow power to pass through.

**Dimension** 3”

**Finish** BK - Black  
WT - White  
BN – Brushed Nickel

**Listing** UL & CUL Listed. 5 year WAC Lighting product warranty.



**2 Wire “I” Straight Line Power Connector**

MODEL	FINISHES		
<b>LI-PWR</b>	<b>BK</b>	<b>WT</b>	<b>BN</b>

Example (Model-Finish): LI-PWR-WT

**Description** Connects two “LT” tracks in a straight line, and is a power entry point. Accepts wires from above the ceiling, with knock out for trade size connector.

**Dimension** 6 3/4”

**Finish** BK - Black  
WT - White  
BN – Brushed Nickel

**Listing** UL & CUL Listed. 5 year WAC Lighting product warranty.

