

S50120RCM

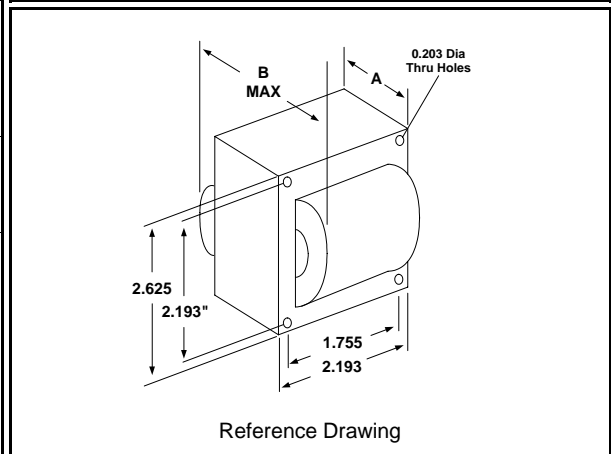
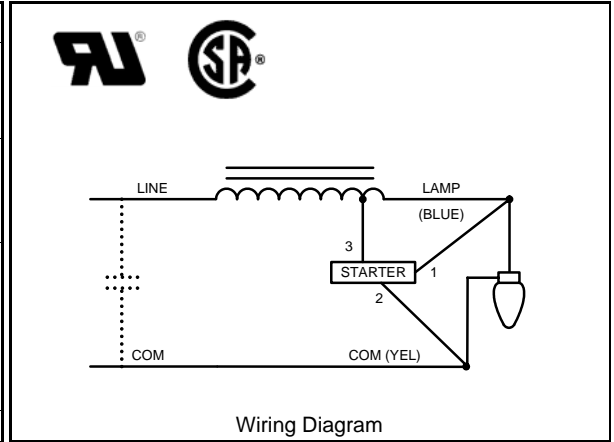
50W S68

High Pressure Sodium

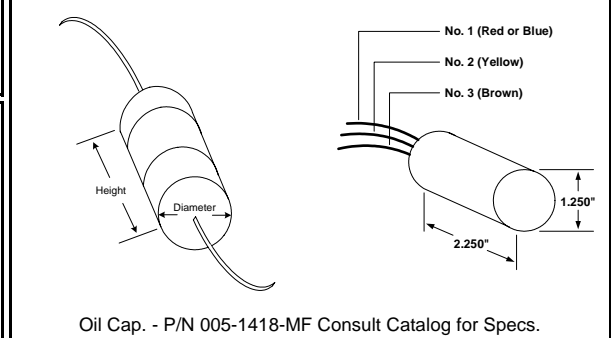
60Hz Reactor

Specification Sheet

Input Volts	120	120			
Regulation					
Line Volts	±5%	±5%			
Lamp Watts	±10%	±10%			
Power Factor (min)	90%	-			
Input Watts	60 W	60 W			
NOM. Open Circuit Voltage	120 V	120 V			
Line Current (Amps)					
Operating	0.52	1.10			
Open Circuit	0.90	-			
Starting	0.50	1.10			
Recommended Fuse (Amps)	3	4			
Lamp Dropout Voltage (Line)	90 V	90 V			
UL Temperature Ratings					
Insulation Class	H (180°C)	H (180°C)			
Temperature Code	A	A			
MIN. Starting Temperature	-40°F -40°C	-40°F -40°C			
CAPACITOR Specifications					
Microfarads	20 uf	-			
Volts (min.)	120 V	-			
60Hz Test Procedures					
High Potential Test 1 Minute	2000 V	2000 V			
High Potential Test 1 Second	2500 V	2500 V			
Secondary Open Ckt Voltage (V)	108 - 132	108 - 132			
Secondary Current Shorted (A)	1.35 - 1.70	1.35 - 1.70			
Input Operating Current (A)	0.45 - 0.60	1.00 - 1.25			
Input Open Circuit Current (A)	0.75 - 1.05	- - -			
Input Short Circuit Current (A)	0.45 - 0.85	1.35 - 1.70			
Core and Coil Specifications					
Dimension A	.83 in	.83 in			
Dimension B	1.95 in	1.95 in			
Weight	1.50 lbs	1.50 lbs			
Lead Lengths (inches)	12-14	12-14			
Coil Material (Pri. / Sec.):	Cu	Cu			



Capacitor: 005-1885-RMF	Ignitor: HPS150-3A
Max Case Temp: 100 °C	Max Case Temp 105 °C
Height: 2.25 in	BTL: 3 ft
Width / Diameter: 1.87 in	



The diagrams show an 'Oil Cap.' with 'Height' and 'Diameter' labels, and an 'Ignitor' with lead labels: 'No. 1 (Red or Blue)', 'No. 2 (Yellow)', and 'No. 3 (Brown)'. Dimensions for the ignitor are 1.250" and 2.250".

Document #:	010-10716-03
Date:	11/17/2008
Status:	Production
Replaces Catalog #:	1233-35U

Data is based upon tests performed by Universal Lighting Technologies in a controlled environment and is representative of relative performance. Actual performance may vary depending on operating conditions. Specifications are subject to change without notice.