

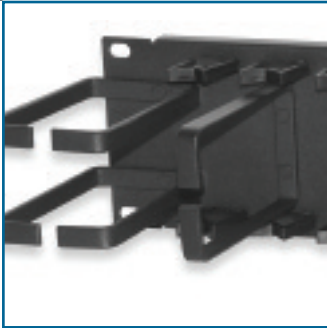
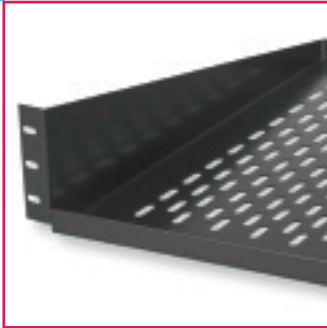
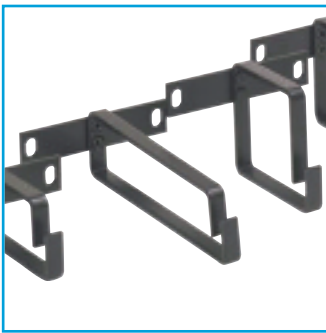
Racks and Cable Management



Premise Connectivity Systems



Racks AND Cable MANAGEMENT



Equipment Racks	E1
Vertical Cable Management for Equipment Racks	E1
Equipment Shelves	E2
Hinged Wall-Mount Brackets	E2
Patch Cord and Cable Management Panels	E3
Cable Management Ring Brackets	E5
Blank Filler Panels	E5
Rack-Mounting Hardware	E5
Velcro Cable Management Ties	E6

Racks and Cable Management

Equipment Racks

Equipment racks are designed for 19-inch rack-mount equipment. Racks are constructed of aluminum and are available in a variety of standard heights. Each rack is drilled and tapped on both the front and the rear rails with 10-32 holes on EIA spacing. Standard rack finish is black. Racks are packaged knocked down for easy shipment.

PART NO.	DESCRIPTION	RACK SPACES
RR-84B	84" High Equipment Rack, Black Finish	45
RR-48B	48" High Equipment Rack, Black Finish	24
RR-84	84" High Equipment Rack, Milled Finish	45
RR-48	48" High Equipment Rack, Milled Finish	24



Vertical Cable Management for Equipment Racks

Vertical Cable management for Equipment Racks can be used for handling both equipment/patch cords and distribution cables providing efficient and inexpensive means for arranging, routing, and protection of cabling. Easy-to-remove snap-on front and back panels in combination with routing and retaining slots on the base facilitate initial cabling installation and routine maintenance procedures. Plastic design of the management troughs with several mounting brackets evenly located along the base provides reliable yet lightweight cable management solution suitable for most telecommunications applications.

PART NO.	DESCRIPTION
VCM-84FR-S	Vertical Cable Management for 84" High Equipment Rack, Side-Mount with 4"W x 5"H Wiring Duct on Front and Back
VCM-84FR-C	Vertical Cable Management for 84" High Equipment Rack, Center-Mount with 4"W x 5"H Wiring Duct on Front and Back
VCM-84F-S	Vertical Cable Management for 84" High Equipment Rack, Side-Mount with 4"W x 5"H Wiring Duct on Front Only

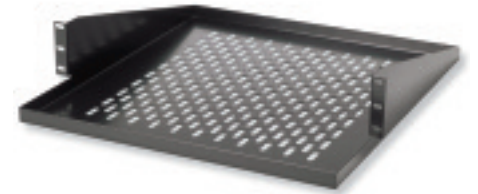
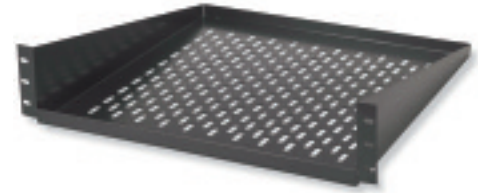


Equipment Shelves and Hinged Wall-Mount Brackets

Rack-Mount Shelves

Shelves are designed for use in equipment and cable management racks, for locating keyboards, monitors, or other shelf-located network equipment. Rack-Mount Shelves are available in either cantilevered or center weight style. Both styles are constructed from 16-gauge steel with a black polyurethane finish in either solid or louvered ventilated bottom style. All shelves are rated for a maximum of 50-lbs capacity.

PART NO.	DESCRIPTION	DIMENSIONS
ERB-14CS	Cantilever Solid Bottom, Black	3.5"H x 14"D
ERB-14C	Cantilever Vented Bottom, Black	3.5"H x 14"D
ERB-18CS	Cantilever Offset Solid Bottom, Black	3.5"H x 18"D
ERB-18C	Cantilever Offset Vented Bottom, Black	3.5"H x 18"D
ERB-19C	Center Weight Vented Bottom, Black	3.5"H x 19"D
ERB-19CS	Center Weight Solid Bottom, Black	3.5"H x 19"D



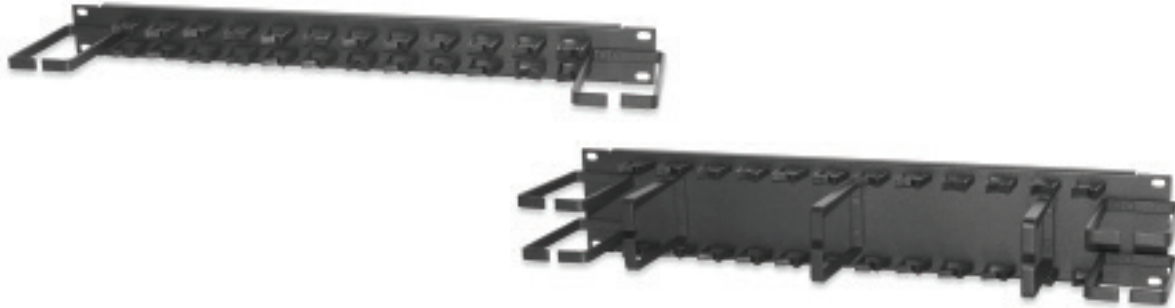
Hinged Wall-Mount Brackets

Hinged Wall-Mount Brackets are designed for mounting one or more 19-inch panels and have a 6-inch standoff depth. Brackets are constructed from 16-gauge steel with a black polyurethane finish. Brackets have cable access holes on both the rear and sides of the brackets to allow a variety of cable access configurations. Brackets can be mounted for either right- or left-hand swing.

PART NO.	DESCRIPTION	RACK SPACES
HWB-175	Hinged Wall Mount Bracket, 1.75"H x 6"D	1
HWB-350	Hinged Wall Mount Bracket, 3.50"H x 6"D	2
HWB-525	Hinged Wall Mount Bracket, 5.25"H x 6"D	3
HWB-700	Hinged Wall Mount Bracket, 7.00"H x 6"D	4
HWB-875	Hinged Wall Mount Bracket, 8.75"H x 6"D	5

Patch Cord and Cable Management Panels

Patch cord and cable management panels provide a simple means of organizing and managing cables, either on the front or rear of an equipment rack or enclosure. Cable management panels are available in several styles with features such as horizontal and vertical rings, individual wire saddles, and slotted duct. All panels allow management and routing of both bundled and individual cables. Cable management panels are available in 1.75" high (1 rack space) and 3.50" high (2 rack spaces) and are supplied with mounting hardware.



Panels with Distribution Rings and Routing Clips

PART NO.	DESCRIPTION	RACK SPACES
CMP-175	Panel with (2) 3" x 3" Vertical Distribution Rings and Routing Clips	1
CMP-350	Panel with (2) 3" x 3" Vertical Distribution Rings, (4) 3" x 3" Horizontal Distribution Rings and Routing Clips	2



Panels with Distribution Rings

PART NO.	DESCRIPTION	RACK SPACES
CMP-175-A	Panel with (5) 1.75" x 3" Horizontal Distribution Rings	1
CMP-350-A	Panel with (5) 3" x 3" Horizontal Distribution Rings	2

Patch Cord and Cable Management Panels



Panels with Distribution Rings and Wiring Duct

PART NO.	DESCRIPTION	RACK SPACES
CMP-175-AD	Panel with (5) 1.75" x 3" Horizontal Distribution Rings and 1.5"H x 4"D Wiring Duct on Back	1
CMP-350-AD	Panel with (5) 3" x 3" Horizontal Distribution Rings and 3"H x 4"D Wiring Duct on Back	2



Panels with Front Wiring Duct

PART NO.	DESCRIPTION	RACK SPACES
CDP-175	Panel with 1.5"H x 3"D Wiring Duct on Front	1
CDP-350	Panel with 3"H x 3"D Wiring Duct on Front	2



Panels with Front and Back Wiring Duct

PART NO.	DESCRIPTION	RACK SPACES
CDP-175-A	Panel with 1.5"H x 3"D Wiring Duct on Front and 1.5"H x 3.75"D Wiring Duct on Back	1
CDP-350-A	Panel with 3"H x 3"D Wiring Duct on Front and 3"H x 3.75"D Wiring Duct on Back	2

Cable Management Ring Brackets and Blank Filler Panels

Cable Management Ring Brackets

Cable Management Ring Brackets can be mounted to the front or rear of a rack to provide both vertical and horizontal cable management. Brackets can be specified in either one or two rack-space sizes and are offered in 4" and 6" depths for accommodating various cable bundle sizes.

PART NO.	DESCRIPTION	RACK SPACES
CMR-175-A	Cable Management Ring Bracket with 1.75"H x 4.00"D Horizontal Ring on 1.75"H Rack-Mount Bracket	1
CMR-175-B	Cable Management Ring Bracket with 2.25"H x 4.00"D Horizontal Ring on 1.75"H Rack-Mount Bracket	1
CMR-175-C	Cable Management Ring Bracket with 1.75"H x 6.125"D Horizontal Ring on 1.75"H Rack-Mount Bracket	1
CMR-175-D	Cable Management Ring Bracket with 2.25"H x 6.125"D Horizontal Ring on 1.75"H Rack-Mount Bracket	1
CMR-350-A	Cable Management Ring Bracket with 1.75"H x 4.00"D Horizontal Ring on 3.50"H Rack-Mount Bracket	2
CMR-350-B	Cable Management Ring Bracket with 2.25"H x 4.00"D Horizontal Ring on 3.50"H Rack-Mount Bracket	2
CMR-350-C	Cable Management Ring Bracket with 1.75"H x 6.125"D Horizontal Ring on 3.50"H Rack-Mount Bracket	2
CMR-350-D	Cable Management Ring Bracket with 2.25"H x 6.125"D Horizontal Ring on 3.50"H Rack-Mount Bracket	2



Blank Filler Panels

PART NO.	DESCRIPTION	RACK SPACES
BFP-19175	Blank Filler Panel, 19"W x 1.75"H	1
BFP-19350	Blank Filler Panel, 19"W x 3.50"H	2
BFP-19525	Blank Filler Panel, 19"W x 5.25"H	3
BFP-19700	Blank Filler Panel, 19"W x 7.00"H	4



Mounting Hardware

PART NO.	DESCRIPTION
RMH-1032	10-32 Rack Mount Hardware, Package of 100



Velcro Cable Management Ties

Cable Management Ties

Velcro® cable management ties provide the best option for securing or bundling communications cables. Their design and construction eliminates over-tensioning and jacket distortion problems, which can degrade transmission performance. Signamax Velcro cable ties provide a solution for bundling cables in an adjustable range of cable bundle diameters up to eight inches and can be ordered in a rack-rail mountable version.

Rack-Mountable Velcro® Cable Management Ties

PART NO.	DESCRIPTION	MAX. BUNDLE DIA.
VCT-08-TC	Velcro Cable Management Tie, 8"L x 1"W	2.0"
VCT-12-TC	Velcro Cable Management Tie, 12"L x 1"W	3.5"
VCT-20-TC	Velcro Cable Management Tie, 20"L x 1"W	6.0"

For cable tie color substitute TC for color in P/N. Sold in packages of 5.

-BK (Black) **-BU (Blue)** **-GN (Green)** **-OR (Orange)** **-RD (Red)** **-WH (White)** **-YE (Yellow)**



Velcro® Cable Management Ties

PART NO.	DESCRIPTION	MAX. BUNDLE DIA.
VCPT-08-TC	Velcro Cable Management Tie, 8"L x 0.5"W	1.60"
VCPT-12-TC	Velcro Cable Management Tie, 12"L x 0.5"W	2.75"

For cable tie color substitute TC for color in P/N. Sold in packages of 10.

-BK (Black) **-BU (Blue)** **-GN (Green)** **-OR (Orange)** **-RD (Red)** **-WH (White)** **-YE (Yellow)**

