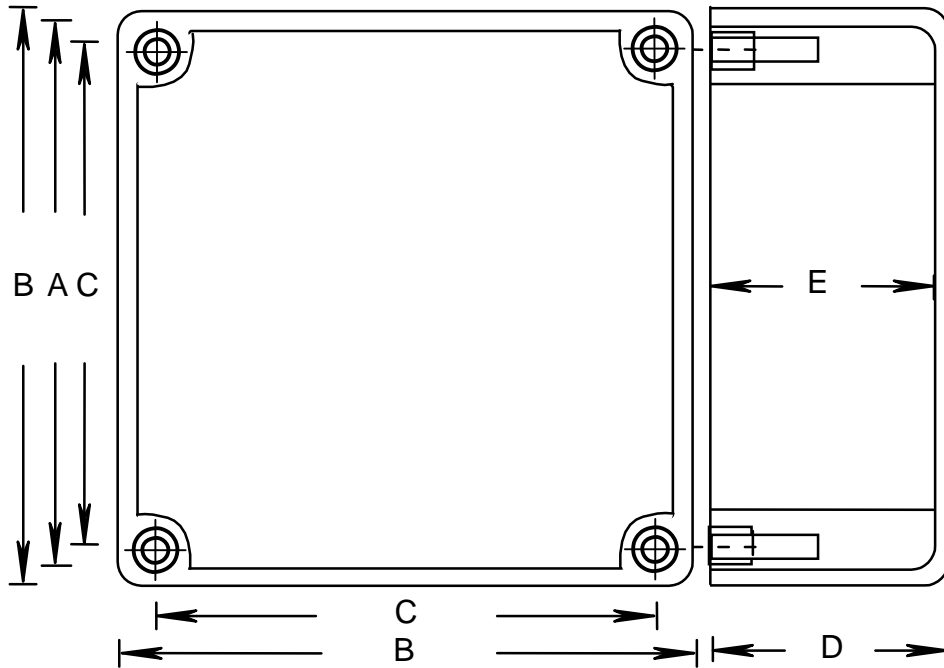


RIGID PVC CONDUIT FITTINGS

JB664 JUNCTION BOXES

ISSUE DATE:
DATE D'EMISSION: 2009 04 30

SUPERCEDES:
REPLACE: 2001 02 28



PRODUCT CODE	PART NUMBER	NOMINAL SIZE		A		B		C	
		(in)	(mm)	(in)	(mm)	(in)	(mm)	(in)	(mm)
077697*	JB 664	6	155	6.000	152	6.375	162	5.813	148
077078	JB 664 ORENCO	6	155	6.000	152	6.375	162	5.813	148
076603*	J664 STAHLIN	6	155	6.000	152	6.375	162	5.813	148

PRODUCT CODE	PART NUMBER	NOMINAL SIZE		D		E		VOLUME	
		(in)	(mm)	(in)	(mm)	(in)	(mm)	(cu. in)	(cu. cm)
077697*	JB 664	6	155	4.180	106	4.000	102	138.0	2263.2
077078	JB 664 ORENCO	6	155	4.180	106	4.000	102	138.0	2263.2
076603*	J664 STAHLIN	6	155	4.180	106	4.000	102	138.0	2263.2

PRODUCT CODE	PART NUMBER	NOMINAL SIZE		GASKET	INSERT	SCREW	M.FEET
		(in)	(mm)	CODE	CODE	CODE	CODE
077697*	JB 664	6	155	097734	072539 (8)	072513 (8)	097747(4)
077078	JB 664 ORENCO	6	155	097734	072539 (4)	072564 (4)	
076603*	J664 STAHLIN	6	155	097734	072539 (4)	072564 (4)	097747(4)

COMES WITH SMALL MOUNTING FEET, 097747

COVER DIMENSIONS

