

Rittal – The System.

Faster – better – everywhere.

Worktop – IW **6902.100**

Date : May 24, 2018

ENCLOSURES

POWER DISTRIBUTION

CLIMATE CONTROL

IT INFRASTRUCTURE

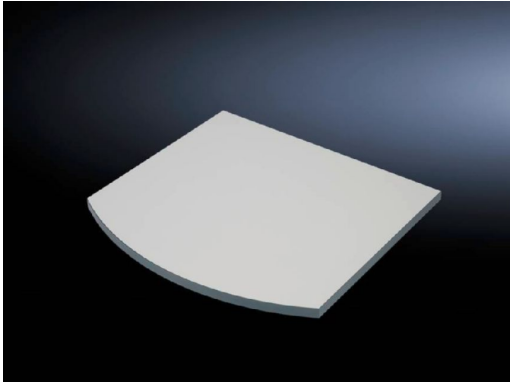
SOFTWARE & SERVICES

FRIEDHELM LOH GROUP



Worktop – IW 6902.100

created: 24.05.2018 build on www.rittal.com/us-en



Product description

Material: Worktop: Chipboard, (plastic-laminated on both sides (edging))

Color: Worktop edge strip: RAL 7015

Product features

Dimensions: Height: 38 mm (1.5 ")
Width: 1000 mm (39 ")
Depth: 895 mm (35 ")

Packaging unit: 1 pc(s).

Weight/packaging unit: 24 kg (52.9 lb.)

EAN: 4028177289772

Customs tariff number: 94039010

ETIM 6.0: EC002502

ETIM 5.0: EC002620

eCl@ss 8.0/8.1: 27180501

eCl@ss 7.0/7.1: 27180501

eCl@ss 6.0/6.1: 27180501

eCl@ss 5.1/5.1.4:

27180501

**Product description
(long):**

IW Industrial workstation, worktops, WD: 1000x895 mm
