

Rittal – The System.

Faster – better – everywhere.

Compact light – SZ 4140.220

Date : May 25, 2018

ENCLOSURES

POWER DISTRIBUTION

CLIMATE CONTROL

IT INFRASTRUCTURE

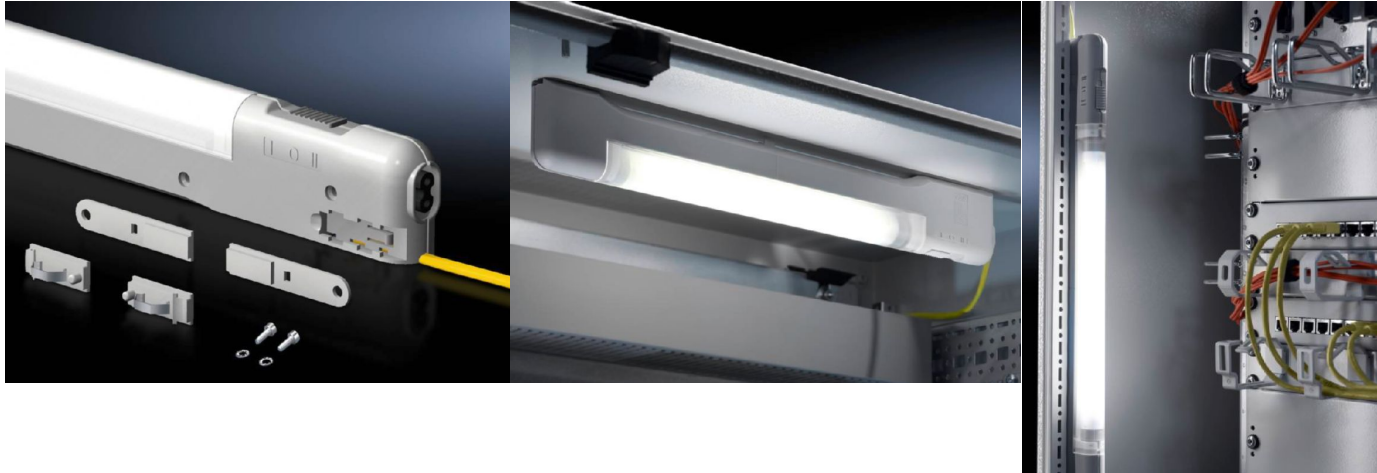
SOFTWARE & SERVICES

FRIEDHELM LOH GROUP



Compact light – SZ 4140.220

created: 25.05.2018 build on www.rittal.com/us-en



Product description

Benefits:

- Slimmer: Height and depth reduced by around 50%, takes up 75% less volume than conventional lights
- Faster: Universal quick-release fastening at TS punchings using clips, screws or powerful magnets (optional). Easy to insert at the sides or rear, fit light and you're done!
- Door-operated switch connection can be made using 2-pole connector
- Transparent light cover, fluted on inside

Color: Similar to RAL 7035

**Protection category
IP to IEC 60 529:** IP 20

Supply includes:

- Compact light with clip and screw mounting kits
- Light (bulb)
- Light cover
- Connection cable
- Assembly components

Note: Door-operated switch connection can be made using 2-pole connector

Product features

Dimensions:

- Height: 59 mm (2.3 ")
- Width: 705 mm (28 ")
- Depth: 24 mm (0.94 ")

**Rated operating
voltage:** 100 V - 240 V, 1~, 50 Hz/60 Hz
Voltage tolerance: $\pm 10\%$

Installation options:

- TS horizontal profile from roof frames: direct
- TS, SE vertical profile, direct
- SE profiles to the front and rear of roof frames: direct

SE profiles to the side of roof frames: direct
 AE, CM, TP: with magnet mounting kit
 AE: with rail for interior installation

Mounting dimensions:	Mounting distance – clip/magnet: 650 mm (26 ") Mounting distance – screw attachment: 725 mm (29 ")
Operating temperature:	Operation (environment): -15°C...+45°C Storage: -20°C...+70°C
Rated current:	At 230 V/50 Hz: 0,073 A - 0,127 A For 110 V/60 Hz: 0,149 A - 0,216 A
Power consumption:	14 W
Equipment (electrical):	Ballast: Wide range voltage EB Light (bulb): T5 fluorescent lamp Length of connection cable: 3 m (118 ") Cable color: Gray Switch (type): Integral, on/off/door-operated switch mode
Rated insulation voltage:	500 V DC/1s
Rated impulse withstand voltage, phase to earth:	1000 V AC
Rated impulse withstand voltage, phase to phase:	500 V AC
Protection category:	II (total insulation)
Connection options:	Integrated connection cable with open end Door-operated switch
Light – installation type:	Screw fastening Clip fastening Magnetic fastener (accessories)
Light cover:	yes
Packaging unit:	1 pc(s).
Weight/packaging unit:	0.76 kg (1.7 lb.)
EAN:	4028177581463
Customs tariff number:	94054095
ETIM 6.0:	EC000321

ETIM 5.0:	EC000321
eCl@ss 8.0/8.1:	27189241
eCl@ss 7.0/7.1:	27189241
eCl@ss 6.0/6.1:	27189241
eCl@ss 5.1/5.1.4:	27189241
Product description (long):	SZ Compact light, WHD: 705x59x24 mm, 14 W, 100-240 V, 50/60 Hz, Integral on/off/door-operated switch mode, cURus
Approvals	
Approvals:	UL + C-UL UR + C-UR
Certificates:	EAC