

# Rittal – The System.

Faster – better – everywhere.

## **KL Terminal Boxes with gland plate – KL 1531.510**

Date : May 24, 2018

ENCLOSURES

POWER DISTRIBUTION

CLIMATE CONTROL

IT INFRASTRUCTURE

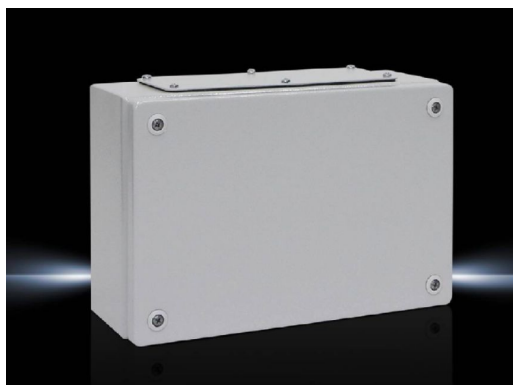
SOFTWARE & SERVICES

FRIEDHELM LOH GROUP



# KL Terminal Boxes with gland plate – KL 1531.510

created: 24.05.2018 build on [www.rittal.com/us-en](http://www.rittal.com/us-en)



## Product description

<b>Material:</b>	Housing: Carbon steel Cover: Carbon steel, all-round foamed-in PU seal
<b>Surface finish:</b>	Housing and cover: Dipcoat primed, powder-coated on the outside, textured paint
<b>Color:</b>	RAL 7035
<b>Protection category IP to IEC 60 529:</b>	IP 55
<b>Protection category NEMA:</b>	NEMA 12
<b>IK code:</b>	IK08
<b>Supply includes:</b>	Housing with cover Quick-release fasteners including plastic bushings Carbon steel flange plates with seals and assembly components
<b>Base material:</b>	Carbon steel

## Product features

<b>Dimensions:</b>	Height: 200 mm (7.9 ") Width: 300 mm (12 ") Depth: 120 mm (4.7 ")
<b>Material thickness::</b>	Housing: 1.25 mm (0.05 ") Cover: 1.25 mm (0.05 ")

<b>Flange Plates:</b>	Size/number (top/bottom): 2 / 1 + 1
<b>Packaging unit:</b>	1 pc(s).
<b>Weight/packaging unit:</b>	3.3 kg
<b>EAN:</b>	4028177251373
<b>Customs tariff number:</b>	85389099
<b>ETIM 6.0:</b>	EC002713
<b>ETIM 5.0:</b>	EC002713
<b>eCl@ss 8.0/8.1:</b>	27180101
<b>eCl@ss 7.0/7.1:</b>	27180101
<b>eCl@ss 6.0/6.1:</b>	27180101
<b>eCl@ss 5.1/5.1.4:</b>	27180102
<b>Product description (long):</b>	KL Terminal box, WHD: 300x200x120 mm, Sheet steel, without mounting plate, with cover, with gland plate

## Approvals

<b>Approvals:</b>	Bureau Veritas CSA DNV-GL Lloyds Register of Shipping Russian Maritime Register of Shipping TÜV UL + C-UL
<b>Certificates:</b>	EAC IK-Code Protection category
<b>Declarations:</b>	Declaration of conformity