

WALLPACKS TALLPACK™



Compact, low-cost Wallpack with uniform light output for outdoor security lighting. HPS, Metal Halide or CFL with photocell or sensor.

Photocell for automatic dusk to dawn operation. Cap included to bypass photocell.

New design vandal resistant polycarbonate housing

Glare shield for field adjustable light control

Die formed aluminum reflector and prismatic polycarbonate refractor for wide light distribution

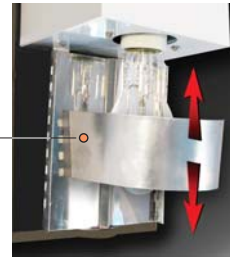
Heavy, die cast aluminum back plate with box mounting template

Heavy duty cast aluminum housing on WPTG Series

Shades work great with Tallpacks! (see pg. 44)

Heavy prismatic glass refractor

1/2" bottom conduit opening



Product Information

High Pressure Sodium
Lamp supplied with fixture

Watts	Lamp Type	Lamp Base	Ballast	Starting Amps / Operating Amps				Input Watts	Lamp ANSI	Initial Lumens	Lamp Hours
				120V	208V	240V	277V				
35	ED17	Med	R-NPF 120V	1.4 / 0.9				46	S76	2,250	24,000
50	ED17	Med	R-NPF 120V	1.8 / 1.2				62	S68	4,000	24,000
70	ED17	Med	R-NPF 120V	2.3 / 1.7				86	S62	6,300	24,000
70	ED17	Med	HX-HPF QT	.6 / .8	.4 / .5	.4 / .3	.3 / .4	91	S62	6,300	24,000
100	ED17	Med	R-NPF 120V	3.1 / 2.1				115	S54	9,500	24,000
100	ED17	Med	HX-HPF QT	1.3 / 1.2	.8 / .7	.7 / .6	.6 / .5	130	S54	9,500	24,000
PS* 50	ED17	Med	HX-NPF 120V	2.0 / 1.6				69	M110	3,400	10,000
PS* 50	ED17	Med	HX-HPF QT	.8 / .7				69	M110	3,400	10,000
PS* 50	ED17	Med	HX-HPF QT	.6 / .6	.4 / .4	.3 / .3	.3 / .3	72	M110	3,400	10,000
PS* 70	ED17	Med	HX-NPF QT	2.8 / 2.2				94	M98	5,600	15,000
PS* 70	ED17	Med	HX-HPF QT	.7 / .8	.4 / .5	.3 / .4	.3 / .4	90	M98	5,600	15,000
PS* 100	ED17	Med	HX-HPF QT	1.0 / 1.2	.6 / .7	.5 / .6	.5 / .5	129	M90	9,000	15,000
26	Triple	GX24q-3	Electronic QT	.3	.2	.1	.1	29		1,800	12,000
28	Quad	GX32d-3	NPF 120V	.6 / .2				33		1,200	10,000
32	Triple	GX24q-3	Electronic QT	.3	.2	.2	.1	26		2,400	12,000
42	Triple	GX24q-4	Electronic QT	.4	.25	.20	.17	47		3,000	10,000

Metal Halide
Lamp supplied with fixture
PS* = Pulse Start
QT=Quad Tap=120 / 208 / 240 / 277volts

Compact Fluorescent
Lamp supplied with fixture



Accessories

Wire Guard
Shade - curved
Shade - rectangular



Specifications

UL Listing:
Suitable for wet locations

Housing & Refractor:
WPTS & WPTF
Vandal resistant polycarbonate molded refractor. Die cast Aluminum back plate.
WPTG
Heavy die cast aluminum housing with prismatic glass refractor.

Reflector:
Die formed aluminum for wide light distribution. Moveable Glare Shield for field adjustable light control started slightly downward for more light on the job.

Back Plate:
Heavy die cast aluminum. 1/2" bottom conduit knockout. Knockouts for mounting to 3" or 4" junction boxes.

Socket:
HPS-MH: Porcelain 4kv Pulse Rated
CFL: 26w & 32w = GX24q-3,
28w = GX32d-3, 42w = GX24q-4

Sensor Switching Capacity:
250 watts fluorescent on WPTFMS model only. 120 volt only.

Sensor Time Adjustment:
(for Smart Tallpack)
5 seconds to 15 minutes

Sensor Detection Zone:
Full 180° by 30°

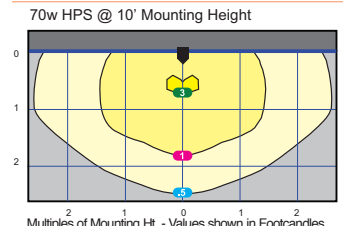
Info Online 24/7

www.rabweb.com
Spec sheets • EZ Lighting Layouts
Photometrics • Wiring Diagrams
IES Files • Installation Instructions

Starting Temps for CFL fixtures:
28w -20°F
26w 0°F
32w 0°F
42w 0°F

Patents:
The design of the Tallpack is protected by U.S. Patent D569,029, Canadian Patent D121,993, China Patent ZL200730149211.2, and Taiwan Patent D124,864. The designs of RAB fixtures are protected under Canadian, U.S. and international intellectual property laws.

Photometrics



Mounting Height	Multiplier	Multiplier		
		Watts	HPS	MH CFL
8	1.6	26	—	.3
10	1.0	28	—	.2
15	.4	32	—	.4
20	.3	42	—	.5
25	.2	35	.4	—
		50	.6	—
		70	1.0	—
		100	—	1.4

New! HPS Tallpack

HPS "Tall" Wallpack. Vandal resistant polycarbonate housing. Heavy die-cast aluminum back plate with 1/2" bottom and back conduit opening. Factory installed 120V photocell with bypass cap included. Glare Shield included. Lamp supplied.

Finish: ● Bronze
○ White



Bronze	White
WPTS35	WPTS35W
WPTS50	WPTS50W
WPTS70	WPTS70W

SHC1	SHC1
SHR1	SHR1

New! Fluorescent Tallpack

28 & 42 watt compact fluorescent Tallpack. Vandal resistant polycarbonate housing. Heavy die-cast aluminum back plate with 1/2" bottom and back conduit opening. Factory installed 120V photocell with bypass cap included. Operating temperature 28w (-20°F), 26,32 & 42w (0°F). Lamp supplied.

Finish: ● Bronze
○ White



Bronze	White
WPTF26	WPTF26W
WPTF28	WPTF28W
WPTF32	WPTF32W
WPTF42	WPTF42W

SHC1	SHC1
SHR1	SHR1

New! Fluorescent Smart Tallpack

28 & 42 watt compact fluorescent Tallpack with built-in mini sensor for motion activated operation. Vandal resistant polycarbonate housing. Sensor has 180° detection and controls up to 250 watts. 120 volt only. Lamp supplied.

Finish: ● Bronze
○ White



For white fixture finish add suffix "W"

With Sensor

WPTF28MS (120 volt only)
WPTF42MS (120 volt only)

SHC1
SHR1

Tallpack Die Cast w/ Glass

Heavy duty die cast aluminum housing with prismatic glass refractor. HPS and Metal Halide models available. with 1/2" bottom and back conduit opening. Factory installed photocell optional. Lamp supplied.

Finish: ● Bronze
○ White



Catalog Numbers

For white fixture finish add suffix "W"

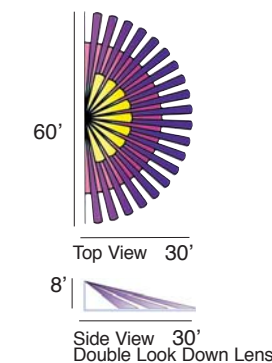
Photocell **No Photocell**

WPTGSN70/PC	WPTGSN70
WPTGSH70QT/PC▲	WPTGSH70QT
WPTGSN100/PC	WPTGSN100
WPTGSN100QT/PC▲	WPTGSH100QT
WPTGHN50/PC	WPTGHN50
WPTGHH50/PC	WPTGHH50
WPTGHH50QT/PC▲	WPTGHH50QT
WPTGHN70/PC	WPTGHN70
WPTGHH70QT/PC▲	WPTGHH70QT
WPTGHH100QT/PC▲	WPTGHH100QT

▲ Specify Photocell voltage

GDWPTG	GDWPTG
SHC1	SHC1
SHR1	SHR1

Detection Pattern



Dimensions

