

WALLPACKS

WP3
WP4

RAB's big Wallpacks are energy efficient and packed with quality features. Perfect for security and perimeter lighting.

Photocell mounting hole

Precision die cast aluminum housing with durable powder bronze or white coating

Top, side and back conduit openings

Drilling template on WP3 for easy box mounting

Door frame opens and remains captive for easy lamp replacement

Silicone gasket remains in place during relamping

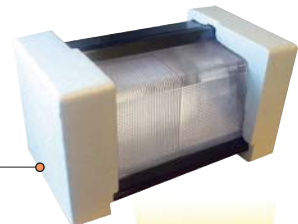
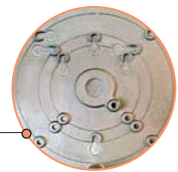
Tempered glass refractor

Shipped in highly protective molded styrofoam packaging

Long life lamp included

PULSE START
Metal Halide

Lamps and ballasts for energy savings & longer lamp life.



Shades are great with wallpacks to reduce glare. See page 54

Product Information

High Pressure Sodium

Lamp included

Metal Halide

Lamp included

PS* = Pulse Start

Compact Fluorescent CFL

Induction

Lamp supplied with fixture

Factory Installed Options

Add suffix to catalog number

Accessories

Watts	Lamp Type	Lamp Base	Ballast
250	ED28	Mogul	CWA HPF QT
400	ED37	Mogul	CWA HPF QT
PS* 200	ED28	Mogul	CWA HPF QT
250	ED28	Mogul	CWA HPF QT
PS* 250	ED28	Mogul	CWA HPF QT
PS* 320	ED28	Mogul	CWA HPF QT
PS* 350	ED28	Mogul	CWA HPF QT
400	ED28	Mogul	CWA HPF QT
PS* 400	ED28	Mogul	CWA HPF QT
120	2G8-1	Hex	Electronic HPF
85			Elec HPF 120v

Button Photoell Specify Photocell voltage
Swivel Photocell Specify Photocell voltage

Single fusing for 120 and 277 volt
Double fusing for 208 and 240 volt
Quartz Restrike
Tamperproof screws

Corrosion protected Wire Guard
Clear Polycarbonate Shield
Shade - Curved
Shade - Rectangular

Starting Amps / Operating Amps			
120V	208V	240V	277V
1.7/2.5	1/1.5	0.8/1.3	0.7/1.1
3.3/3.8	1.8/2.2	1.5/1.9	1.4/1.7
1.4/2.0	.8/1.2	.7/1.0	.6/1.0
2.2/2.5	1.3/1.5	1.1/1.3	1.0/1.3
1.4/2.5	.8/1.2	.7/1.0	.6/1.1
2.6/3.2	1.5/1.8	1.3/1.6	1.2/1.4
3.3/3.6	1.9/2.1	1.7/1.8	1.4/1.6
3.5/4.0	2.0/2.3	1.8/2.0	1.5/1.8
3.5/4.0	2.0/2.3	1.8/2.0	1.5/1.8
1.2	1	.8	.6

Input Watts	Lamp ANSI	Initial Lumens	Lamp Hours
295	S50	28,500	24,000
464	S51	50,000	24,000
232	M136	21,000	15,000
295	M58	21,000	10,000
288	M138	25,000	15,000
368	M132	31,000	20,000
400	M131	35,000	20,000
458	M59	36,000	20,000
450	M135	40,000	20,000
139	*	9,000	20,000
		6,000	100,000



480 volt only ballast (substitute "480" for QT)



Wire Guard
GDWP3W
(fits WP3 & WP4 only)



Polycarbonate Shield
GDWP3P
(fits WP3 & WP4 only)



Curved Glare Shield
SHC3
(fits WP3/WP3C/WP4/WP4C)



Rectangular Glare Shield
SHR3
(fits WP3/WP3C/WP4/WP4C)

Specifications

UL Listing:

Suitable for wet locations.
Fixtures can be wired with 90°C supply wiring if supply wires are routed 3" away from ballast.

Housing:

Die cast aluminum, 1/2" NPS tapped top, both sides and back for conduit or photocell. Hinged refractor frame. Continuous silicone rubber gasket.

Reflector:

Specular anodized aluminum, removable for installation. Symmetrical light pattern maximizes distance between fixtures.

Refractor:

Prismatic optics designed to minimize glare and throw light down and out. Heat resistant borosilicate glass.

Socket:

4kv Pulse Rated Mogul Porcelain socket with nickel plated screw shell and spring loaded center contact.

Finish:

Chip and fade resistant architectural bronze epoxy powder coating

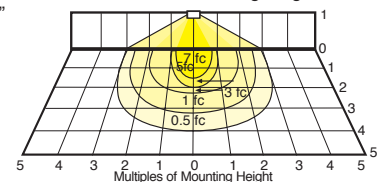
Spec Sheets, Installation Manuals, Wiring Diagrams & Photometrics 24/7
www.rabweb.com > click "PRODUCTS"

Patents:

The designs of RAB fixtures are protected under U.S. and international intellectual property laws.

Photometrics

WP3/4 Shown. See page 164 for WP3C/WP4C 250w HPS @ 16' Mounting Height



Mounting Height Multiplier	Watts	Multiplier HPS vMH
8'	4	200PS .7
10'	2.6	250 1.0 .7
12'	1.8	250PS .9
16'	1.0	320PS 1.0
20'	.6	350PS 1.1
24'	.5	400 1.8 1.2
32'	.3	400PS 1.4

WP3

Large wallpack for 250 watts HPS or Metal Halide. All aluminum precision die cast construction with tempered glass refractor. Lamp included.

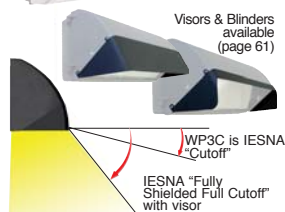
Finish: ● Architectural Bronze
○ White



WP3C Cutoff

Large cutoff wallpack for 250 watts HPS or Metal Halide. All aluminum precision die cast construction with tempered glass refractor. Lamp included.

Finish: ● Architectural Bronze
○ White



WP3C has IESNA "Cutoff" light distribution. With the visor installed, WP3C achieves IESNA "Fully Shielded, Full Cutoff" distribution

Catalog Numbers

Bronze	White
WP3SC250QT	WP3SC250QTW

WP3H200PSQ	WP3H200PSQW
WP3H250QT	WP3H250QTW
WP3H250PSQ	WP3H250PSQW

WP3F120QT	WP3F120QTW
-----------	------------

/PC	/PC
/PCS	/PCS

/F	/F
/FF	/FF
/QR	/QR
/TP	/TP

GDWP3W	GDWP3W
GDWP3P	GDWP3P
SHC3A	SHC3W
SHR3A	SHR3W

Note: Guard and Shield may be used together for extra vandal resistance

Bronze	White
WP3CSC250QT	WP3CSC250QTW

WP3CH200PSQ	WP3CH200PSQW
WP3CH250QT	WP3CH250QTW
WP3CH250PSQ	WP3CH250PSQW

WP3CF120QT	WP3CF120QTW
------------	-------------

/PC	/PC
/PCS	/PCS

/F	/F
/FF	/FF
/QR	/QR
/TP	/TP

SHC3A	SHC3W
SHR3A	SHR3W

Note: Guard and Shield may be used together for extra vandal resistance

WP4

RAB's largest wallpack for 400 watts HPS or Metal Halide. All aluminum precision die cast construction with tempered glass refractor. Lamp included.

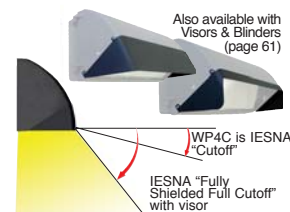
Finish: ● Architectural Bronze
○ White



WP4C Cutoff

RAB's largest cutoff wallpack for 400 watts HPS or Metal Halide. All aluminum precision die cast construction with tempered glass refractor. Lamp included.

Finish: ● Architectural Bronze
○ White



WP4C has IESNA "Cutoff" light distribution. With the visor installed, WP4C achieves IESNA "Fully Shielded, Full Cutoff" distribution

Bronze	White
WP4SC400QT	WP4SC400QTW

WP4H320PSQ	WP4H320PSQW
WP4H350PSQ	WP4H350PSQW
WP4H400QT	WP4H400QTW
WP4H400PSQ	WP4H400PSQW

WP4QL85	WP4QL85W
---------	----------

/PC	/PC
/PCS	/PCS

/F	/F
/FF	/FF
/QR	/QR
/TP	/TP

GDWP3W	GDWP3W
GDWP3P	GDWP3P
SHC3A	SHC3W
SHR3A	SHR3W

Note: Guard and Shield may be used together for extra vandal resistance

Bronze	White
WP4CSC400QT	WP4CSC400QTW

WP4CH320PSQ	WP4CH320PSQW
WP4CH350PSQ	WP4CH350PSQW
WP4CH400QT	WP4CH400QTW
WP4CH400PSQ	WP4CH400PSQW

/PC	/PC
/PCS	/PCS

/F	/F
/FF	/FF
/QR	/QR
/TP	/TP

SHC3A	SHC3W
SHR3A	SHR3W

Note: Guard and Shield may be used together for extra vandal resistance

Dimensions

