

PROFICIENT  
**Protege**

**PROFICIENT**  
**Product Catalog**  
January 2014

# Welcomed Changes at Proficient

Go inside our latest Dealer Price Book and see for yourself. Check out the new Proficient Protege thin-bezel architectural speakers. They have the clean look that your customers prefer. But what do you hear? The same great sound you have always come to rely on. We adapted each model in Proficient Protege from our legacy speakers. Installation is a bit easier and the model numbers are a bit different but fortunately, the sound remains the same while this sleek, new updated look has really nice aesthetics, a much cleaner feel to it than before.

With 31 new Protege speakers, you can get this great new look at any price, in any configuration — from entry-level and mid-range 6½" ceiling speakers or our Flagship 10" 3-way ceiling speaker for an extra-high SPL job, to dual-woofer inwall LCRs to wrap around a TV or even an couple of dual 8" inwall subs to round out one of your signature home theater systems.

Our new Proficient One IR Kit is the first infrared sensor designed specifically to work with slim flat-panel TVs. By moving the electronics into a separate, inline module, we were able to shrink the sensor to about the size of a dime. The Proficient One IR Kit includes three snap-in mounts — tabletop, TV mount and flush mount — so you no longer have to stock three SKUs like before. This will allow you to carry one SKU on your truck instead of the three different Kits. Sound good?

We think our new products are going to make it easier than ever for you to create not only great sounding systems but really nice looking installations — more quickly and profitably than ever before!



Keith Marshall  
Proficient Audio Systems  
Cell: 951.288.0945  
[keith.marshall@corebrands.com](mailto:keith.marshall@corebrands.com)

# Proficient Signature Series

While Proficient is known for in-wall, in-ceiling, and outdoor speakers, the brand has recently launched a major effort to create a cabinet speaker and floor-standing sub that can suit the most demanding stereo and home theater jobs.

The GL6 and GS10 both have a beautiful black high-gloss finish with magnetically attached grilles and no visible fasteners.

The speakers are designed so they can be used with or without grilles. Whether you're setting up a high-quality music system or a deluxe home theater, the GL6 and GS10 can not only handle the job but handle it superbly.

The clarity and power of their sound are right up there with some of the finest speakers you'll ever hear.



## GL6 Dual 6½" LCR Speaker

U/M  
Each

One bookshelf LCR speaker with two 6½" graphite woofers, 1" silk dome tweeter and 125 watt power handling. Features a seven-layer high-gloss black finish and wood framed grille with neo-magnets.

- Power Handling: 125 Watts
- Frequency Response: 46Hz - 20kHz
- Impedance: 4Ω
- Sensitivity: 89dB 1W/1m
- Cabinet Design
- Dimensions (H x W x D): 8" x 24" x 10½"



## GS10 Flagship 10" Sub

U/M  
Each

Powered subwoofer with 10" long-excursion pulp-composite cone woofer and 250 watt multi-voltage Class D Amp. Features a seven-layer high-gloss black finish, wood framed grille with neo-magnets and brushed aluminum feet.

- Power: 250 Watt RMS Class D Amp
- Frequency Response: 28Hz - 200Hz
- Input: Left & Right Line Level, LFE
- Phase Switch: 0 - 180°
- Protection: Overload Limiter Circuit
- Power On/Off: Auto Sensing
- Crossover: 50Hz - 150Hz
- Multi-Voltage
- Rear Port
- Dimensions (H x W x D): 13½" x 13½" x 14½"

PROFICIENT

# Protege<sup>™</sup>

## Ceiling Speakers

### C851

U/M  
Pair

One pair of ceiling speakers with 8" Kevlar<sup>®</sup> woofers, cast magnesium woofer baskets, 1" pivoting aluminum dome tweeters,  $\pm 3$ dB bass & treble contour switches and 175 watt power handling.

- Replaces C850 Ceiling Speakers
- Power Handling: 175 Watts
- Frequency Response: 28Hz - 22kHz
- Impedance: 8 $\Omega$
- Sensitivity: 92dB 1W/1m
- Includes Thin-Bezel Grilles held by Neo Magnets
- Diameter x Depth: 11 $\frac{1}{8}$ " x 4 $\frac{1}{4}$ "
- Ceiling Cut Out: 9 $\frac{3}{4}$ "



### C801

U/M  
Pair

One pair of ceiling speakers with 8" graphite woofers, 1" pivoting aluminum dome tweeters, +3dB bass & treble contour switches and 150 watt power handling.

- Replaces C800 Ceiling Speakers
- Power Handling: 150 Watts
- Frequency Response: 28Hz - 22kHz
- Impedance: 8 $\Omega$
- Sensitivity: 92dB 1W/1m
- Includes Thin-Bezel Grilles held by Neo Magnets
- Diameter x Depth: 11 $\frac{1}{8}$ " x 4 $\frac{1}{4}$ "
- Ceiling Cut Out: 9 $\frac{3}{4}$ "

### C791

U/M  
Pair

One pair of ceiling speakers with 8" polypropylene woofers, 1" pivoting soft dome tweeters and 125 watt power handling.

- Replaces C790 Ceiling Speakers
- Power Handling: 125 Watts
- Frequency Response: 36Hz - 20kHz
- Impedance: 8 $\Omega$
- Sensitivity: 92dB 1W/1m
- Includes Thin-Bezel Grilles held by Neo Magnets
- Diameter x Depth: 11 $\frac{1}{8}$ " x 4 $\frac{1}{4}$ "
- Ceiling Cut Out: 9 $\frac{3}{4}$ "



### C646

U/M  
Pair

One pair of ceiling speakers with 6 $\frac{1}{2}$ " Kevlar<sup>®</sup> woofers, cast magnesium woofer baskets, 1" pivoting aluminum dome tweeters, +3dB bass & treble contour switches and 150 watt power handling.

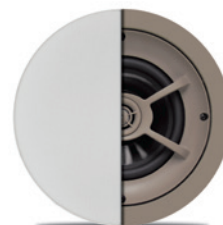
- Replaces C645 Ceiling Speakers
- Power Handling: 150 Watts
- Frequency Response: 32Hz - 22kHz
- Impedance: 8 $\Omega$
- Sensitivity: 92dB 1W/1m
- Includes Thin-Bezel Grilles held by Neo Magnets
- Diameter x Depth: 9 $\frac{1}{4}$ " x 3 $\frac{5}{8}$ "
- Ceiling Cut Out: 8 $\frac{1}{4}$ "

### C641

U/M  
Pair

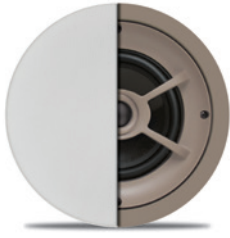
One pair of ceiling speakers with 6 $\frac{1}{2}$ " graphite woofers, 1" pivoting aluminum dome tweeters, +3dB bass & treble contour switches and 125 watt power handling.

- Replaces C640 Ceiling Speakers
- Power Handling: 125 Watts
- Frequency Response: 32Hz - 22kHz
- Impedance: 8 $\Omega$
- Sensitivity: 92dB 1W/1m
- Includes Thin-Bezel Grilles held by Neo Magnets
- Diameter x Depth: 9 $\frac{1}{4}$ " x 3 $\frac{5}{8}$ "
- Ceiling Cut Out: 8 $\frac{1}{4}$ "



PROFICIENT

# Protege™ Ceiling Speakers



## C626

**U/M**  
Pair

One pair of ceiling speakers with 6½" graphite woofers, 1" pivoting silk dome tweeters and 100 watt power handling.

- Replaces C625 Ceiling Speakers
- Power Handling: 100 Watts
- Frequency Response: 45Hz - 20kHz
- Impedance: 8Ω

- Sensitivity: 91dB 1W/1m
- Includes Thin-Bezel Grilles held by Neo Magnets
- Diameter x Depth: 9¼" x 4"
- Ceiling Cut Out: 8¼"

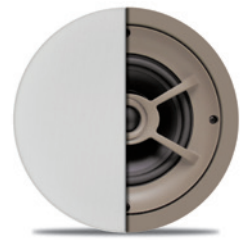
## C621

**U/M**  
Pair

One pair of ceiling speakers with 6½" polypropylene woofers, 1" pivoting silk dome tweeters and 100 watt power handling.

- Replaces C620 Ceiling Speakers
- Power Handling: 100 Watts
- Frequency Response: 45Hz - 20kHz
- Impedance: 8Ω

- Sensitivity: 91dB 1W/1m
- Includes Thin-Bezel Grilles held by Neo Magnets
- Diameter x Depth: 9¼" x 3⅝"
- Ceiling Cut Out: 8¼"



## C612

**U/M**  
Pair

One pair of ceiling speakers with 6½" polypropylene woofers, 1" pivoting soft dome tweeters and 85 watt power handling.

- Replaces C610 Ceiling Speakers
- Power Handling: 85 Watts
- Frequency Response: 45Hz - 20kHz
- Impedance: 8Ω

- Sensitivity: 91dB 1W/1m
- Includes Thin-Bezel Grilles held by Neo Magnets
- Diameter x Depth: 9¼" x 3⅝"
- Ceiling Cut Out: 8¼"

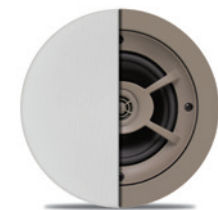
## C606

**U/M**  
Pair

One pair of ceiling speakers with 6½" polypropylene woofers, ¾" soft dome tweeters and 75 watt power handling.

- Replaces C605 Ceiling Speakers
- Power Handling: 75 Watts
- Frequency Response: 45Hz - 20kHz
- Impedance: 8Ω

- Sensitivity: 90dB 1W/1m
- Includes Thin-Bezel Grilles held by Neo Magnets
- Diameter x Depth: 9¼" x 3⅝"
- Ceiling Cut Out: 8¼"



## C501

**U/M**  
Pair

One pair of ceiling speakers with 5¼" polypropylene woofers, ½" pivoting polyamide hard dome tweeters and 75 watt power handling.

- Replaces C500 Ceiling Speakers
- Power Handling: 75 Watts
- Frequency Response: 40Hz - 20kHz
- Impedance: 8Ω

- Sensitivity: 90dB 1W/1m
- Includes Thin-Bezel Grilles held by Neo Magnets
- Diameter x Depth: 7¾" x 3¼"
- Ceiling Cut Out: 6⅞"

PROFICIENT

# Protege<sup>™</sup>

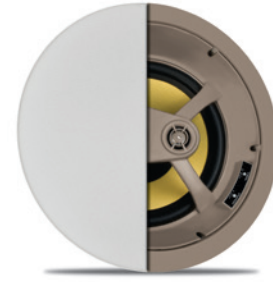
## Ceiling LCR Speakers

### C1031

U/M  
Each

One LCR ceiling speaker with woofer and midrange/tweeter bridge fixed at a 15° angle. 10" Kevlar® woofer, 3" pivoting Kevlar® midrange, 1" pivoting aluminum dome tweeter, ±3dB midrange & treble contour switches and 200 watt power handling. Required for installation, the included PCB-C1000 bracket is designed for new construction as well as retrofit applications.

- Replaces C1030 Ceiling LCR Speaker
- Power Handling: 200 Watts
- Frequency Response: 40Hz - 22kHz
- Impedance: 4Ω
- Sensitivity: 92dB 1W/1m
- Includes Thin-Bezel Grille held by Neo Magnets
- Diameter x Depth: 13 $\frac{3}{8}$ " x 7 $\frac{7}{8}$ "
- Ceiling Cut Out: 11 $\frac{1}{8}$ "



### C871

U/M  
Each

One LCR ceiling speaker with woofer and tweeter bridge fixed at a 15° angle. 8" Kevlar® woofer and 1" pivoting aluminum dome tweeter, ±3dB bass & treble contour switches and 175 watt power handling.

- Replaces C870 Ceiling LCR Speaker
- Power Handling: 175 Watts
- Frequency Response: 28Hz - 22kHz
- Impedance: 8Ω
- Sensitivity: 92dB 1W/1m
- Includes Thin-Bezel Grille held by Neo Magnets
- Diameter x Depth: 11 $\frac{1}{8}$ " x 5 $\frac{7}{8}$ "
- Ceiling Cut Out: 9 $\frac{3}{4}$ "



### C841

U/M  
Each

One LCR ceiling speaker with woofer and tweeter bridge fixed at a 15° angle. 8" graphite woofer and 1" pivoting silk dome tweeter, ±3dB bass & treble contour switches and 150 watt power handling.

- Replaces C840 Ceiling LCR Speaker
- Power Handling: 150 Watts
- Frequency Response: 40Hz - 22kHz
- Impedance: 8Ω
- Sensitivity: 92dB 1W/1m
- Includes Thin-Bezel Grille held by Neo Magnets
- Diameter x Depth: 11 $\frac{1}{8}$ " x 5 $\frac{7}{8}$ "
- Ceiling Cut Out: 9 $\frac{3}{4}$ "



### C661

U/M  
Each

One LCR ceiling speaker with woofer and tweeter bridge fixed at a 15° angle. 6 $\frac{1}{2}$ " graphite woofer and 1" pivoting aluminum dome tweeter and 125 watt power handling.

- Replaces C660 Ceiling LCR Speaker
- Power Handling: 125 Watts
- Frequency Response: 36Hz - 22kHz
- Impedance: 8Ω
- Sensitivity: 92dB 1W/1m
- Includes Thin-Bezel Grille held by Neo Magnets
- Diameter x Depth: 9 $\frac{1}{4}$ " x 4 $\frac{9}{16}$ "
- Ceiling Cut Out: 8 $\frac{1}{4}$ "



### C656

U/M  
Each

One LCR ceiling speaker with woofer and tweeter bridge fixed at a 15° angle. 6 $\frac{1}{2}$ " graphite woofer and 1" pivoting silk dome tweeter and 100 watt power handling.

- Replaces C655 Ceiling LCR Speaker
- Power Handling: 100 Watts
- Frequency Response: 45Hz - 20kHz
- Impedance: 8Ω
- Sensitivity: 91dB 1W/1m
- Includes Thin-Bezel Grille held by Neo Magnets
- Diameter x Depth: 9 $\frac{1}{4}$ " x 5"
- Ceiling Cut Out: 8 $\frac{1}{4}$ "



### C651

U/M  
Each

One LCR ceiling speaker with woofer and tweeter bridge fixed at a 15° angle. 6 $\frac{1}{2}$ " polypropylene woofer and 1" pivoting silk dome tweeter and 100 watt power handling.

- Replaces C650 Ceiling LCR Speaker
- Power Handling: 100 Watts
- Frequency Response: 45Hz - 20kHz
- Impedance: 8Ω
- Sensitivity: 91dB 1W/1m
- Includes Thin-Bezel Grille held by Neo Magnets
- Diameter x Depth: 9 $\frac{1}{4}$ " x 4 $\frac{9}{16}$ "
- Ceiling Cut Out: 8 $\frac{1}{4}$ "

PROFICIENT

# Protege™

## Inwall LCR Speakers



### IW655

**U/M**  
Each

One inwall LCR speaker with two 6½" Kevlar™ woofers, 1" pivoting aluminum dome tweeter, ±3dB bass & treble contour switches and 150 watt power handling. Fits horizontally between 16" on-center wall studs.

- Replaces IW650 Inwall LCR Speaker
- Power Handling: 150 Watts
- Frequency Response: 50Hz - 20kHz
- Impedance: 8Ω
- Sensitivity: 90dB 1W/1m
- Includes Thin-Bezel Grille held by Neo Magnets
- Dimensions (H x W x D): 9" x 16⅞" x 3"
- Wall Cut Out (H x W): 7½" x 14½"

### IW630

**U/M**  
Each

One inwall LCR speaker with two 6½" graphite woofers, 1" pivoting soft dome tweeter, ±3dB bass & treble contour switches and 125 watt power handling. Fits horizontally between 16" on-center wall studs.

- Replaces IW625 Inwall LCR Speaker
- Power Handling: 125 Watts
- Frequency Response: 55Hz - 20kHz
- Impedance: 8Ω
- Sensitivity: 90dB 1W/1m
- Includes Thin-Bezel Grille held by Neo Magnets
- Dimensions (H x W x D): 9" x 16⅞" x 3"
- Wall Cut Out (H x W): 7½" x 14½"



### IW555

**U/M**  
Each

One inwall LCR speaker with two 5¼" Kevlar™ woofers, 1" pivoting aluminum dome tweeter, ±3dB bass & treble contour switches and 125 watt power handling.

- Replaces IW550 Inwall LCR Speaker
- Power Handling: 125 Watts
- Frequency Response: 60Hz - 20kHz
- Impedance: 8Ω
- Sensitivity: 88dB 1W/1m
- Includes Thin-Bezel Grille held by Neo Magnets
- Dimensions (H x W x D): 8" x 15⅛" x 3⅞"
- Wall Cut Out (H x W): 6¾" x 14½"

### IW530

**U/M**  
Each

One inwall LCR speaker with two 5¼" graphite woofers, 1" pivoting aluminum dome tweeter, ±3dB bass & treble contour switches and 100 watt power handling.

- Replaces IW525 Inwall LCR Speaker
- Power Handling: 100 Watts
- Frequency Response: 65Hz - 20kHz
- Impedance: 8Ω
- Sensitivity: 88dB 1W/1m
- Includes Thin-Bezel Grille held by Neo Magnets
- Dimensions (H x W x D): 8" x 15⅛" x 3⅞"
- Wall Cut Out (H x W): 6¾" x 14½"





PROFICIENT

# Protege<sup>™</sup>

## Inwall Speakers

### W852

U/M  
Pair

One pair of inwall speakers with 8" Kevlar<sup>®</sup> woofers, cast magnesium woofer baskets, 1" pivoting aluminum dome tweeters,  $\pm 3$ dB bass & treble contour switches and 175 watt power handling.

- Replaces W850 Inwall Speakers
- Power Handling: 175 Watts
- Frequency Response: 28Hz - 22kHz
- Impedance: 8 $\Omega$
- Sensitivity: 92dB 1W/1m
- Includes Thin-Bezel Grilles held by Neo Magnets
- Dimensions (H x W x D): 14 $\frac{7}{8}$ " x 10 $\frac{1}{8}$ " x 3 $\frac{3}{4}$ "
- Wall Cut Out (H x W): 13 $\frac{5}{8}$ " x 8 $\frac{3}{4}$ "



### W802

U/M  
Pair

One pair of inwall speakers with 8" graphite woofers, 1" pivoting aluminum dome tweeters, +3dB bass & treble contour switches and 150 watt power handling.

- Replaces W800 Inwall Speakers
- Power Handling: 150 Watts
- Frequency Response: 28Hz - 22kHz
- Impedance: 8 $\Omega$
- Sensitivity: 92dB 1W/1m
- Includes Thin-Bezel Grilles held by Neo Magnets
- Dimensions (H x W x D): 14 $\frac{7}{8}$ " x 10 $\frac{1}{8}$ " x 3 $\frac{3}{4}$ "
- Wall Cut Out (H x W): 13 $\frac{5}{8}$ " x 8 $\frac{3}{4}$ "

### W692

U/M  
Pair

One pair of inwall speakers with 6 $\frac{1}{2}$ " Kevlar<sup>®</sup> woofers, cast magnesium woofer baskets, 1" pivoting aluminum dome tweeters, +3dB bass & treble contour switches and 150 watt power handling.

- Replaces W690 Inwall Speakers
- Power Handling: 150 Watts
- Frequency Response: 32Hz - 22kHz
- Impedance: 8 $\Omega$
- Sensitivity: 92dB 1W/1m
- Includes Thin-Bezel Grilles held by Neo Magnets
- Dimensions (H x W x D): 12 $\frac{1}{4}$ " x 8 $\frac{3}{16}$ " x 3 $\frac{3}{16}$ "
- Wall Cut Out (H x W): 10 $\frac{7}{8}$ " x 6 $\frac{3}{4}$ "



### W682

U/M  
Pair

One pair of inwall speakers with 6 $\frac{1}{2}$ " graphite woofers, 1" pivoting aluminum dome tweeters, +3dB bass & treble contour switches and 125 watt power handling.

- Replaces W680 Inwall Speakers
- Power Handling: 125 Watts
- Frequency Response: 32Hz - 22kHz
- Impedance: 8 $\Omega$
- Sensitivity: 92dB 1W/1m
- Includes Thin-Bezel Grilles held by Neo Magnets
- Dimensions (H x W x D): 12 $\frac{1}{4}$ " x 8 $\frac{3}{16}$ " x 3 $\frac{3}{16}$ "
- Wall Cut Out (H x W): 10 $\frac{7}{8}$ " x 6 $\frac{3}{4}$ "

### W672

U/M  
Pair

One pair of inwall speakers with 6 $\frac{1}{2}$ " polypropylene woofers, 1" pivoting silk dome tweeters and 100 watt power handling.

- Replaces W670 Inwall Speakers
- Power Handling: 100 Watts
- Frequency Response: 36Hz - 20kHz
- Impedance: 8 $\Omega$
- Sensitivity: 91dB 1W/1m
- Includes Thin-Bezel Grilles held by Neo Magnets
- Dimensions (H x W x D): 12 $\frac{1}{4}$ " x 8 $\frac{3}{16}$ " x 3 $\frac{3}{8}$ "
- Wall Cut Out (H x W): 10 $\frac{7}{8}$ " x 6 $\frac{3}{4}$ "



### W667

U/M  
Pair

One pair of inwall speakers with 6 $\frac{1}{2}$ " polypropylene woofers,  $\frac{3}{4}$ " soft dome tweeters and 75 watt power handling.

- Replaces W665 Inwall Speakers
- Power Handling: 75 Watts
- Frequency Response: 45Hz - 20kHz
- Impedance: 8 $\Omega$
- Sensitivity: 90dB 1W/1m
- Includes Thin-Bezel Grilles held by Neo Magnets
- Dimensions (H x W x D): 12 $\frac{1}{4}$ " x 8 $\frac{3}{16}$ " x 3 $\frac{3}{16}$ "
- Wall Cut Out (H x W): 10 $\frac{7}{8}$ " x 6 $\frac{3}{4}$ "



PROFICIENT

# Protege™

## Single Stereo Ceiling Speakers



### C825TT

**U/M**  
Each

One ceiling speaker with 8" dual voice coil graphite woofer, two 1" pivoting aluminum dome tweeters, +3dB bass & treble contour switches and 150 watt power handling.

- Replaces C800TT Single Stereo Ceiling Speaker
- Power Handling: 150 Watts
- Frequency Response: 28Hz - 22kHz
- Impedance: 8Ω
- Sensitivity: 92dB 1W/1m
- Includes Thin-Bezel Grille held by Neo Magnets
- Diameter x Depth: 11½" x 4¼"
- Ceiling Cut Out: 9¾"

---

### C625TT

**U/M**  
Each

One ceiling speaker with 6½" dual voice coil polypropylene woofer, two ½" hard dome tweeters and 75 watt power handling.

- Replaces C600TT Single Stereo Ceiling Speaker
- Power Handling: 75 Watts
- Frequency Response: 36Hz - 20kHz
- Impedance: 8Ω
- Sensitivity: 92dB 1W/1m
- Includes Thin-Bezel Grille held by Neo Magnets
- Diameter x Depth: 9¼" x 3⅝"
- Ceiling Cut Out: 8¼"



PROFICIENT

# Protege™

## Architectural Subwoofers

### IWS85 Inwall Sub

U/M  
Each

Dual 8" inwall passive subwoofer with long excursion graphite woofers and a power handling capacity of 200 watts. Fits vertically in a standard 2x4 stud bay. Designed to be used with the Proficient M3 Amp/Crossover.

- Replaces IWS82 Inwall Sub
- Power Handling: 200 Watts
- Frequency Response: 30Hz - 120Hz
- Includes Thin-Bezel Grille held by Neo Magnets
- Dimensions (H x W x D): 20 $\frac{9}{16}$ " x 11 $\frac{3}{4}$ " x 3 $\frac{3}{4}$ "
- Wall Cut Out (H x W): 19 $\frac{1}{8}$ " x 10 $\frac{5}{8}$ "



### IWS105 Inwall Sub

U/M  
Each

Inwall passive subwoofer with a 10" long excursion treated paper cone woofer and inverted ferrite magnet structure with a power handling capacity of 250 watts. Designed to be used with the Proficient M3 Amp/Crossover. For new construction, use the BB-IWS10 MDF back box.

- Replaces IWS100 Inwall Sub
- Power Handling: 250 Watts
- Frequency Response: 36Hz - 150Hz
- Includes Thin-Bezel Grille held by Neo Magnets
- Dimensions (H x W x D): 13 $\frac{5}{8}$ " x 13 $\frac{5}{8}$ " x 3 $\frac{3}{4}$ "
- Wall Cut Out (H x W): 12 $\frac{1}{16}$ " x 12 $\frac{1}{16}$ "

### ICS11 Ceiling Sub

U/M  
Each

Ceiling passive subwoofer with a 10" long excursion graphite woofer and a power handling capacity of 175 watts. Designed to be used with the Proficient M3 Amp/Crossover.

- Replaces ICS10 Ceiling Sub
- Power Handling: 175 Watts
- Frequency Response: 30Hz - 120Hz
- Includes Thin-Bezel Grille held by Neo Magnets
- Diameter x Depth: 13 $\frac{5}{8}$ " x 5 $\frac{3}{4}$ "
- Ceiling Cut Out: 11 $\frac{3}{4}$ "



### M3 Amp/Crossover

U/M  
Each

180 watt high-current mono amp with built-in crossover network. Crossover features adjustments for subwoofer fine-tuning to individual room acoustics. Includes bolt-on rack ears.

- Use with Proficient Inwall & Ceiling Architectural Subs
- Premium Cast Aluminum Faceplate
- Power: 180 Watts Single Channel
- Variable Low Pass Crossover: 35Hz - 150Hz
- LFE Input & Pass Through Output
- Phase Switch
- Remote Power-On Switching via Signal Sensing
- Includes Bolt-On Rack Ears
- Dimensions (H x W x D): 4" x 17 $\frac{1}{8}$ " x 12 $\frac{5}{8}$ "
- Weight: 18 lbs



### BB-IWS10 Back Box

U/M  
Each

Medium Density Fiberboard (MDF) back box for the IWS105 & IWS100 inwall subs, designed to fit any standard 16" stud bay. Cuts down on translational energy vibration between adjacent walls. The IWS105 & IWS100 subs are tuned to the BB-IWS10 back box. *Not for use with ICS11, ICS10, IWS85 and IWS82.*

- Dimensions (H x W x D): 42 $\frac{3}{4}$ " x 14 $\frac{3}{8}$ " x 3 $\frac{1}{4}$ "



# Floor Standing Subwoofers



## Flagship GS10 Sub



U/M  
Each

Powered subwoofer with 10" long-excursion pulp-composite cone woofer and 250 watt multi-voltage Class D Amp. Features a seven-layer, high-gloss black finish, wood framed grille with neo-magnets and brushed aluminum feet.

- Power: 250 Watt RMS Class D Amp
- Frequency Response: 28Hz - 200Hz
- Input: Left & Right Line Level, LFE
- Phase Switch: 0 - 180°
- Protection: Overload Limiter Circuit
- Power On/Off: Auto Sensing
- Crossover: 50Hz - 150Hz
- Multi-Voltage
- Rear Port
- Dimensions (H x W x D): 13½" x 13½" x 14½"

---

## PS12 Sub w/ Class D Amp

U/M  
Each

One subwoofer with 12" long excursion treated paper cone woofer and 250 watt multi-voltage Class D Amp. Slotted rear-firing port eliminates vent noise and distortion. Black wood grain finish and brushed aluminum feet.

- Power: 250 Watt RMS Class D Amp
- Frequency Response: 28Hz - 200Hz
- Input: Left & Right Line Level, LFE
- Phase Switch: 0 - 180°
- Protection: Overload Protection Circuit
- Power On/Off: Auto Sensing
- Port: Rear Slotted
- Dimensions (H x W x D): 18¼" x 14¼" x 17¼"



## PS10 Sub

U/M  
Each

One subwoofer with 10" long excursion treated paper cone woofer and 120 watt multi-voltage amplifier. Slotted rear-firing port eliminates vent noise and distortion. Black wood grain finish & aluminum feet.

- Power: 120 Watts RMS
- Frequency Response: 32Hz - 200Hz
- Input: Left & Right Line Level, LFE
- Phase Switch: 0 - 180°
- Protection: Overload Protection Circuit
- Power On/Off: Auto Sensing
- Port: Rear Slotted
- Dimensions (H x W x D): 15½" x 11½" x 17½"

---

## PS8 Sub

U/M  
Each

One subwoofer with 8" long excursion treated paper cone woofer and 80 watt multi-voltage amplifier. Slotted rear-firing port eliminates vent noise and distortion. Black wood grain finish & aluminum feet.

- Power: 80 Watts RMS
- Frequency Response: 45Hz - 200Hz
- Input: Left & Right Line Level, LFE
- Phase Switch: 0 - 180°
- Protection: Overload Protection Circuit
- Power On/Off: Auto Sensing
- Port: Rear Slotted
- Dimensions (H x W x D): 12¾" x 9¾" x 16"



# Indoor / Outdoor Speakers

## AW830wht | blk

U/M  
Pair

One pair of indoor/outdoor speakers with 8" polypropylene woofers, 3" graphite midrange, 1" pivoting soft dome tweeters and 175 watt power handling. Includes swivel mounting brackets. **Order in white or black.**

- Power Handling: 175 Watts
- Frequency Response: 35Hz - 20kHz
- Impedance: 4Ω
- Sensitivity: 89dB 1W/1m
- Dimensions (H x W x D): 15¾" x 8¾" x 8¾"



## AW650wht | blk

U/M  
Pair

One pair of indoor/outdoor speakers with 6½" polypropylene woofers, 1" pivoting Supernil soft dome tweeters and 150 watt power handling. Includes swivel mounting brackets. **Order in white or black.**

- Power Handling: 150 Watts
- Frequency Response: 37Hz - 20kHz
- Impedance: 8Ω
- Sensitivity: 89dB 1W/1m
- Dimensions (H x W x D): 11" x 7" x 6¼"

## AW525wht | blk

U/M  
Pair

One pair of indoor/outdoor speakers with 5¼" polypropylene woofers, 1" pivoting Supernil soft dome tweeters and 125 watt power handling. Includes swivel mounting brackets. **Order in white or black.**

- Power Handling: 125 Watts
- Frequency Response: 45Hz - 20kHz
- Impedance: 8Ω
- Sensitivity: 88dB 1W/1m
- Dimensions (H x W x D): 9¾" x 6½" x 6¾"



## AW400wht | blk

U/M  
Pair

One pair of indoor/outdoor speakers with 4" polypropylene woofers, ¾" Supernil soft dome tweeters and 100 watt power handling. Includes swivel mounting brackets. **Order in white or black.**

- Power Handling: 100 Watts
- Frequency Response: 55Hz - 20kHz
- Impedance: 8Ω
- Sensitivity: 87dB 1W/1m
- Dimensions (H x W x D): 7¾" x 5½" x 5½"

# Single Stereo Indoor / Outdoor Speakers



## AW600Twht | blk

U/M  
Each

One indoor/outdoor speaker with 6½" dual voice coil polypropylene woofer, two 1" pivoting Supernil soft dome tweeters and 125 watt power handling. Weather-resistant ABS housing, powder coated aluminum grille. Includes swivel mounting bracket. **Order in white or black.**

- Power Handling: 125 Watts
- Frequency Response: 50Hz - 20kHz
- Impedance: 4Ω
- Sensitivity: 91dB 1W/1m
- Dimensions (H x W x D): 7" x 12" x 8"

## AW500Twht | blk

U/M  
Each

One indoor/outdoor speaker with 5¼" dual voice coil polypropylene woofer, two 1" pivoting Supernil soft dome tweeters and 100 watt power handling. Weather-resistant ABS housing, powder coated aluminum grille. Includes swivel mounting bracket. **Order in white or black.**

- Power Handling: 100 Watts
- Frequency Response: 60Hz - 20kHz
- Impedance: 4Ω
- Sensitivity: 89dB 1W/1m
- Dimensions (H x W x D): 7" x 11" x 6¼"



# Single Stereo Rock Speaker



## R800TTg / R800TTs

U/M  
Each

One rock speaker with an 8" dual voice coil graphite woofer, two 1" polyamide dome tweeters and 90 watt power handling. **Order in granite or sandstone.**

- Power Handling: 90 Watts
- Frequency Response: 65Hz - 20kHz
- Impedance: 8Ω
- Sensitivity: 90dB 1W/1m
- Weather-Resistant Design
- Dimensions (H x W x D): 14½" x 14½" x 11"

# Rock Speakers

## R800G / R800S

U/M  
Pair

One pair of rock speakers with 8" graphite woofers, 1" polyamide dome tweeters and 90 watt power handling. **Order in granite or sandstone.**

- Power Handling: 90 Watts
- Frequency Response: 65Hz - 20kHz
- Impedance: 8Ω
- Sensitivity: 95dB 1W/1m
- Weather-Resistant Design
- Dimensions (H x W x D): 14½" x 14½" x 11"



## R650G / R650S

U/M  
Pair

One pair of rock speakers with 6½" graphite woofers, 1" polyamide dome tweeters and 60 watt power handling. **Order in granite or sandstone.**

- Power Handling: 60 Watts
- Frequency Response: 80Hz - 20kHz
- Impedance: 8Ω
- Sensitivity: 88dB 1W/1m
- Weather-Resistant Design
- Dimensions (H x W x D): 11½" x 9½" x 8¼"

# Center Channel Speakers

## CC550

U/M  
Each

One bookshelf center channel speaker with two 5¼" Kevlar® woofers, 3" Kevlar® midrange, 1" aluminum dome tweeter and 125 watt power handling.

- Power Handling: 125 Watts
- Frequency Response: 40Hz - 20kHz
- Impedance: 8Ω
- Sensitivity: 88dB 1W/1m
- Bookshelf Design
- Dimensions (H x W x D): 6¾" x 20½" x 8¾"



## CC540

U/M  
Each



One bookshelf center channel speaker with two 5¼" graphite woofers, 3" graphite midrange, 1" aluminum dome tweeter and 100 watt power handling.

- Power Handling: 100 Watts
- Frequency Response: 70Hz - 20kHz
- Impedance: 8Ω
- Sensitivity: 89dB 1W/1m
- Bookshelf Design
- Dimensions (H x W x D): 6¾" x 20½" x 8¾"

## CC400

U/M  
Each

One bookshelf center channel speaker with two 4" polypropylene woofers, 1" aluminum dome tweeter and 85 watt power handling.

- Power Handling: 85 Watts
- Frequency Response: 80Hz - 20kHz
- Impedance: 8Ω
- Sensitivity: 89dB 1W/1m
- Bookshelf Design
- Dimensions (H x W x D): 5½" x 20" x 7¼"



# Onwall LCR Speaker



## F400gb

U/M  
Each

One onwall LCR for use with plasma and LCD flat panel video displays. Features dual 4" injection molded polypropylene woofers and 1" pivoting aluminum dome tweeter, with ±3dB bass & treble contour switches and 100 watt power handling. Available in Gloss Black.

- Power Handling: 100 Watts
- Frequency Response: 62Hz - 20kHz
- Impedance: 4Ω
- Sensitivity: 86dB 1W/1m
- Surface Mount Bracket Included
- Dimensions (H x W x D): 24" x 7½" x 4"



# MultiRoom Receiver / Controller

## M6 MultiRoom Receiver

U/M  
Each



Distributed audio receiver that plays right out of the box. Runs six zones, has dual tuners built-in and will accommodate six source components. Has 12 channels of digital amplification with 30 watts per channel. Includes six PMKIR single-gang keypads with built-in IR receiver and six IR Single Flashers. Keypads feature installer-configurable buttons. Both AM/FM tuners have 10 presets per zone. Program the M6 via Proficient Editor software. Includes bolt-on rack ears. Expandable to 24 zones and eight sources.

- Premium Cast Aluminum Faceplate
- Six Zone Audio Receiver
- Six source inputs + 2 AM/FM Tuners
- Power: 30 Watts x 12 Channels
- Telephone Paging & Doorbell Mute
- All Digital Amplification
- Includes Six PMKIR Master Keypads w/IR
- Includes Six IR Single Flashers & Bolt-On Rack Ears
- Includes Programming Cable
- Programmable via Proficient Editor software
- Dimensions (H x W x D): 5<sup>13</sup>/<sub>16</sub>" x 17<sup>1</sup>/<sub>8</sub>" x 15<sup>1</sup>/<sub>2</sub>"
- Weight: 26 lbs

## M4 MultiRoom Controller



U/M  
Each

Distributed audio controller. Hook it up and it immediately runs without any programming. Plays 4 zones and 6 component sources. Features 8 channels of digital amplification with 30 watts per channel. Includes four PMKIR single-gang keypads with built-in IR receiver and six IR Single Flashers. Keypads have installer-configurable buttons. Program the M4 via Proficient Editor software. Includes bolt-on rack ears. Expandable to 16 zones and 6 sources.



- Premium Cast Aluminum Faceplate
- Four zone audio controller
- Six Source Inputs
- Power: 30 Watts x 8 Channels
- Telephone Paging & Doorbell Mute
- All Digital Amplification
- Includes Four PMKIR Master Keypads w/IR
- Includes Six IR Single Flashers & Bolt-On Rack Ears
- Includes Programming Cable
- Programmable via Proficient Editor software
- Dimensions (H x W x D): 5<sup>13</sup>/<sub>16</sub>" x 17<sup>1</sup>/<sub>8</sub>" x 15<sup>1</sup>/<sub>2</sub>"
- Weight: 20 lbs

# Source Keypad & Dock

## The Source Keypad wht

U/M  
Each



Designed specifically for Proficient M4 & M6, The Source Keypad creates the ultimate media control experience by providing real-time system status, menu-driven control options, and source metadata with its high-resolution color LCD. Menu options include system source selection, internal tuner presets with frequency (when used with M6), iPod® menus and metadata as well as a variety of keypad setup options.

- High-Res, 64K Color (16 Bit) LCD Display
- Menu, Source Component & Metadata Display
- Fully Retrofit Compatible with PMKIR Installations
- Easy Navigation Scroll Wheel
- Volume Control Knob w/Back-Lit Level Indicator
- 7 Back-Lit, Configurable 'Hard Keys'
- Built-In IR Receiver
- Fits Most Dual Gang Electrical Boxes
- Includes White bezel

## The Source Dock wht

U/M  
Each

The Source Dock and The Source Dock Adapter provide an enhanced interface when used in conjunction with The Source Keypad and M4 or M6. Universal style dock is compatible with most iPod® models. Also charges the iPod and allows USB connection to computer for syncing with iTunes. The Source Dock and The Source Dock Adapter ship together in one convenient package (every Source Dock requires a Source Dock Adapter). Linking Dock Adapters allow up to Six Source Docks per system.

- Converts iPod Audio into a Balanced Audio Signal
- Converts iPod Serial Data to RS485 Data
- RJ45 Jack for CAT5 Connection to Dock Adapter
- USB Port for Syncing iPod to Computer
- Auxiliary Audio Input
- Designed Specifically for Proficient M4 & M6
- Includes (1) iPod-Compatible Source Dock
- Includes (1) Source Dock Adapter
- Includes (1) Stereo Mini to RCA Audio Cable
- Requires The Source Power Supply



## The Source Power Supply

U/M  
Each

24V DC 2.5 Amp Power Supply for the Source Dock. Supports up to six Dock Adapters.



# MultiRoom Keypads & Accessories

## PMKIR

U/M  
Each

Single-gang Master keypad with built-in IR receiver. All buttons are removable and configurable. Includes extra buttons to customize any job. **MUST be connected to a Proficient M4 or M6.**

- Single-Gang Keypad
- Built-In IR Receiver
- 8 Source Select Buttons
- 7 Source Buttons Can Be Programmed For Function Control (One Of The 8 Must Be For Source Selection)
- 4 Additional Buttons Can Be Programmed For Any Function Excluding Source Selection
- Includes Extra Buttons for Custom Configuration
- Includes White, Bone and Almond Plates & Inserts



## PMK

U/M  
Each

Single-gang Master keypad. All buttons are removable and configurable. Includes extra buttons to customize any job. **MUST be connected to a Proficient M4 or M6.**

- Single-Gang Keypad
- 8 Source Select Buttons
- 7 Source Buttons Can Be Programmed For Function Control (One Of The 8 Must Be For Source Selection)
- 5 Additional Buttons Can Be Programmed For Any Function Excluding Source Selection
- Includes Extra Buttons For Custom Configuration
- Includes White, Bone and Almond Plates & Inserts

## PFK

U/M  
Each

Function keypad **must be connected to a PMKIR or PMK Master keypad.** Features 14 custom configurable buttons. Includes extra buttons with text and icons to customize any job.

- 14 Configurable Buttons
- Includes Extra Buttons for Custom Configuration
- Includes Ribbon Cable for Connection to PMKIR or PMK
- Includes White, Bone and Almond Inserts



Shown with Optional Wall Plate (Not Included)



Shown with Optional Wall Plate (Not Included)

## PNK

U/M  
Each

Numeric keypad **must be connected to a PMKIR or PMK Master keypad.** Features 16 custom configurable buttons: 10 numeric and 6 function. Includes extra buttons with text and icons to customize any job.

- 16 Configurable Buttons
- Includes Extra Buttons for Custom Configuration
- Includes Ribbon Cable for Connection to PMKIR or PMK
- Includes White, Bone and Almond Inserts

## Command Interface Kit

U/M  
Each

Contains everything you need to connect and program an M4 or M6 from your laptop. Includes:

- (1) Command Interface
- (1) 6' DB9 to Quad 3.5mm Plug Transfer Cable
- (1) USB to DB9 adapter cable
- (1) Power Supply



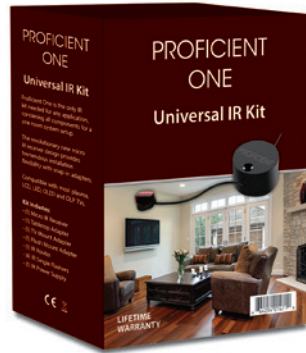
## Control Module

U/M  
Each

This Proficient Control Module is specifically programmed to interface Proficient M4 or M6 and Third-Party Control Platforms. The RS232 Data I/O connects directly to the Third-Party Control Hardware, and the Expansion Port connects to M4 or M6 via CAT5 cable.

- Communication Interface for M4 & M6
- Expansion Port RS232 Buffer for External Control
- Connects via Cat5 to M4 or M6 Expansion Port
- RS232 9-Pin Male Data I/O

# Infrared Kits



## Proficient One Universal IR Kit

Shipping  
Q2 2014

U/M  
Each

Proficient One is the only IR kit needed for any application, containing all components for a one room system setup. The revolutionary new micro IR receiver design provides tremendous installation flexibility. Includes snap-in adapters for tabletop, TV mount and flush mount applications. Compatible with most plasma, LCD, LED, OLED and DLP TVs.

- Replaces all previous Proficient IR Kits
- (1) Mini IR Sensor
- (1) Tabletop Adapter
- (1) TV Mount Adapter
- (1) Flush Mount Adapter
- (1) IR Router
- (2) IR Dual Flashers
- (1) IR Power Supply

## IR Shelf Top Kit

U/M  
Each

Contains all components needed for a one room system setup. Includes the following IR components:

- (1) IR Shelf Top Receiver
- (1) IR Router
- (1) IR Power Supply–250mA
- (4) IR Single Flashers



## IR Plasma Kit

U/M  
Each

Compatible with most Plasma, LCD, LED and DLP. Contains all components needed for a one room system setup. Includes the following IR components:

- (1) IR Plasma Receiver
- (1) IR Router
- (1) IR Power Supply–250mA
- (4) IR Single Flashers

## IR Mini-blk Kit

U/M  
Each

Contains all components needed for a one room system setup. Includes the following IR components:

- (1) IR Mini Receiver–blk
- (1) IR Router
- (1) IR Power Supply–250mA
- (4) IR Single Flashers



## IR Fish Eye Kit

U/M  
Each

Compatible with most Plasma, LCD, LED and DLP. Contains all components needed for a one room system setup. Includes the following IR components:

- (1) IR Fish Eye Receiver
- (1) IR Router
- (1) IR Power Supply–250mA
- (4) IR Single Flashers

# Infrared Components

## IR Shelf Top Receiver

U/M  
Each

Shelf-top IR receiver features Ambient Noise Suppression and LEDs to indicate system status and IR activity. IR Terminal included for easy, no-cut connection.

- Dimensions (L x W x D): 1 $\frac{1}{8}$ " x 3 $\frac{3}{16}$ " x 1 $\frac{1}{16}$ "



## IR Plasma Receiver

U/M  
Each

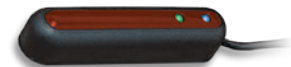
Super small, surface-mount IR plasma receiver. Two-piece design separates the receiver from the "Smart Circuit" electronics package for clean looking installation. The "Smart Circuit" blocks interference from plasmas or CFLs. LEDs indicate system status and IR activity. IR Terminal included for easy, no-cut connection. Compatible with most Plasma, LCD, LED and DLP.

## IR Mini Receiver-blk

U/M  
Each

Surface-mount mini IR receiver features Ambient Noise Suppression and LEDs to indicate system status and IR activity. IR Terminal included for easy, no-cut connection.

- Dimensions (L x W x D) : 2 $\frac{9}{16}$ " x 1 $\frac{7}{32}$ " x  $\frac{9}{16}$ "



## IR Fish Eye Receiver

U/M  
Each

Flush-mount IR receiver features Ambient Noise Suppression and LEDs to indicate system status and IR activity. Includes four flavors of bezels (white, black, almond, and bone) and two Ambient Light Restrictor (ALR) bezels for severe plasma or CFL environments. IR Terminal included for easy, no-cut connection. Compatible with most Plasma, LCD, LED and DLP.

- Dimensions (Dia x L) : 1 $\frac{5}{32}$ " x 2 $\frac{5}{8}$ "
- Color Bezel (Dia x L): 4 $\frac{7}{64}$ " x 1 $\frac{1}{8}$ "
- ALR Bezel (Dia x L): 4 $\frac{7}{64}$ " x 2 $\frac{3}{64}$ "

## IR Router

U/M  
Each

Central router for all Proficient IR systems. Controls IR receivers and IR Flashers. Equipped with 3.5mm mini jacks for quick connection of IR Receivers and Flashers. Multiple IR Routers can be cascaded for additional IR Flasher output jacks.



## IR Power Supply-250mA

U/M  
Each

12V DC, 250mA regulated power supply designed for use in small to moderate IR systems. Powers the IR Receivers, IR Router and IR Flashers.

## IR Single Flasher

U/M  
Each

LED flashes red to indicate operation. Features docking port which allows quick installation of IR Flasher on a component, as well as easy removal of IR Flasher. Includes an 8' wire for painless hookup to IR Router.



## IR Dual Flasher

U/M  
Each

LEDs flash red to indicate operation. Features docking ports which allow quick installation of IR Flashers on components, as well as easy removal of IR Flashers. The Dual IR Flasher splits to two 8' wires for easy hookup to IR Router.

# Volume Controls



## VC60i

U/M  
Each

60-watt impedance-balancing volume control with autoformer. Features quick & secure wire connecting system. Fits in most single-gang J-boxes and plaster rings. Includes white, bone and almond plates, inserts and knobs.

- Power Handling: 60 Watts Continuous  
120 Watts Peak Music Power
- Frequency Response: 20Hz - 20kHz
- Steps: 12 (Make Before Break)
- Total Attenuation: 42dB (Max)
- Depth: 2½" Behind Plate

## VC45i

U/M  
Each

45-watt impedance-balancing volume control with autoformer. Features removable wire block terminal for easy connection. Fits in most single-gang J-boxes and plaster rings. Includes white, bone and almond plates, inserts and knobs.

- Power Handling: 45 Watts Continuous  
90 Watts Peak Music Power
- Frequency Response: 20Hz - 20kHz
- Steps: 10 (Make Before Break)
- Total Attenuation: 42dB (Max)
- Depth: 2½" Behind Plate



## VCS60

U/M  
Each

60-watt stereo volume control with autoformer. Features quick & secure wire connecting system. Fits in most single-gang J-boxes and plaster rings. Includes white, bone and almond plates, inserts and knobs.

- Power Handling: 60 Watts Continuous  
120 Watts Peak Music Power
- Frequency Response: 20Hz - 20kHz
- Steps: 12 (Make Before Break)
- Total Attenuation: 42dB (Max)
- Depth: 2½" Behind Plate

## VC60SL

U/M  
Each

60-watt slider stereo volume control with removable screw down wire terminal design. Fits in most single-gang J-boxes and plaster rings. Includes white, bone and almond plates, inserts and sliders.

- Power Handling: 60 Watts Continuous  
120 Watts Peak Music Power
- Frequency Response: 20Hz - 20kHz
- Steps: 12 (Make Before Break)
- Total Attenuation: 42dB (Max)
- Dimensions (H x W x D): 4" x 1⅞" x 3¼"



## VC60AW

U/M  
Each

60-watt weather-resistant volume control sealed against dust and moisture. Fits onto ¾" conduit or can be surface mounted. Available in Gray.

- Power Handling: 60 Watts Continuous  
120 Watts Peak Music Power
- Frequency Response: 20Hz - 20kHz
- Steps: 12 (Make Before Break)
- Total Attenuation: 42dB (Max)
- Dimensions (H x W x D): H 4½" x W 2¾" x D 3½"

# Speaker Selectors



## SS4VC

U/M  
Each

Four-pair transformer-based on/off speaker selector with volume controls provides quick, convenient access for up to four stereo pairs. 60 watts power handling per channel, rear override switch for circuit protection and suction feet for stable operation.

- Power Handling: 60 Watts per Channel
- Frequency Response: 20Hz - 20kHz
- Protection: Front Mounted Switch & Rear Override
- Includes Area Labels
- Dimensions (H x W x D): 2 $\frac{3}{16}$ " x 17" x 6 $\frac{13}{32}$ "



## SS8P

U/M  
Each

Eight-pair resistor-based on/off speaker selector provides quick, convenient access for up to eight stereo pairs. 125 watts power handling per channel, rear override switch for circuit protection and suction feet for stable operation.

- Power Handling: 125 Watts per Channel
- Frequency Response: 20Hz - 20kHz
- Protection: Front Mounted Switch & Rear Override
- Includes Area Labels
- Dimensions (H x W x D): 2 $\frac{3}{16}$ " x 17" x 6 $\frac{13}{32}$ "



## SS4P

U/M  
Each

Four-pair resistor-based on/off speaker selector provides quick, convenient access for up to four stereo pairs. 125 watts power handling per channel, rear override switch for circuit protection and suction feet for stable operation.

- Power Handling: 125 Watts per Channel
- Frequency Response: 20Hz - 20kHz
- Protection: Front Mounted Switch & Rear Override
- Includes Area Labels
- Dimensions (H x W x D): 2 $\frac{3}{16}$ " x 8 $\frac{3}{8}$ " x 6 $\frac{13}{32}$ "

# Pre-Construction Brackets

## PCB-C800

U/M  
Pair

One pair of pre-construction brackets for new construction. Fits 8" ceiling speakers, 8" single stereo ceiling speakers and 8" ceiling LCR speakers.



## PCB-C600

U/M  
Pair

One pair of pre-construction brackets for new construction. Fits 6½" ceiling speakers, 6½" single stereo ceiling speakers and 6½" ceiling LCR speakers.

## PCB-C500

U/M  
Pair

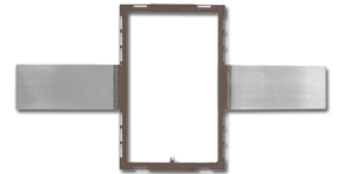
One pair of pre-construction brackets for new construction. Fits 5¼" ceiling speakers.

---

## PCB-W800

U/M  
Pair

One pair of pre-construction brackets for new construction. Fits 8" inwall speakers.



## PCB-W600

U/M  
Pair

One pair of pre-construction brackets for new construction. Fits 6½" inwall speakers.

---

## PCB-C800 Extension Wings

U/M  
Pair

One pair of 15" extension wings for PCB-C800 pre-construction brackets.



## PCB-C600 Extension Wings

U/M  
Pair

One pair of 15" extension wings for PCB-C600 pre-construction brackets.

## PCB-C500 Extension Wings

U/M  
Pair

One pair of 15" extension wings for PCB-C500 pre-construction brackets.

---

## PCB-IW600

U/M  
Each

One each pre-construction bracket for new construction. Fits 6½" inwall LCR speakers.



## PCB-IW500

U/M  
Each

One each pre-construction bracket for new construction. Fits 5¼" inwall LCR speakers.

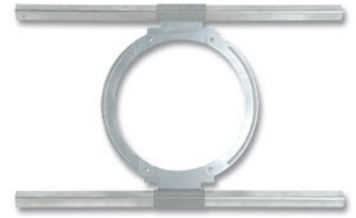


# Ceiling Tile Brackets

## CTB-C800

One each ceiling tile bracket used in drop ceiling and T-bar type ceiling applications. Fits 8" ceiling speakers, 8" single stereo ceiling speakers and 8" ceiling LCR speakers.

U/M  
Each



## CTB-C600

One each ceiling tile bracket used in drop ceiling and T-bar type ceiling applications. Fits 6½" ceiling speakers, 6½" single stereo ceiling speakers and 6½" ceiling LCR speakers.

U/M  
Each

# Back Boxes



## BB-IWS10

Medium Density Fiberboard (MDF) back box for the IWS105 & IWS100 inwall subs, designed to fit any standard 16" stud bay. Cuts down on translational energy vibration between adjacent walls. The IWS105 & IWS100 subs are tuned to the BB-IWS10 back box. *Not for use with ICS11, ICS10, IWS85 and IWS82.*

• Dimensions (H x W x D): 42¾" x 14⅜" x 3¼"

U/M  
Each

## BB-C800

One metal back box for 8" ceiling speakers, 8" single stereo ceiling speakers and 8" ceiling LCR speakers. **UL 263-03 1-hour fire rating.**

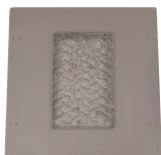
U/M  
Each



## BB-C650

One metal back box for 6½" ceiling speakers, 6½" single stereo ceiling speakers and 6½" ceiling LCR speakers. CMB-24 mounting bars are needed when installing in ceiling joists 24" on-center or suspended ceilings. **UL 263-03 1-hour fire rating.**

U/M  
Each



## BB-W600

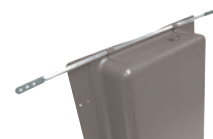
One metal back box for 6½" inwall speakers. **UL 263-03 1-hour fire rating.**

U/M  
Each

## CMB-24

One pair of ceiling mounting bars slip into clips on BB-C650 back box. For installation in ceiling joists 24" on-center or suspended ceilings.

U/M  
Pair





# Speaker Cover Plates



## CPC-800

One pair of white cover plates for 8" ceiling speakers, 8" single stereo ceiling speakers and 8" ceiling LCR speakers.

**U/M**  
Pair

## CPC-600

One pair of white cover plates for 6½" ceiling speakers, 6½" single stereo ceiling speakers and 6½" ceiling LCR speakers.

**U/M**  
Pair

---

## CPW-600

One pair of white cover plates for 6½" inwall speakers.

**U/M**  
Pair



# PROFICIENT®

1800 S McDowell Blvd • Petaluma, CA 94954 • 800.472.5555 • Fax 707.283.5901 • [proficientaudio.com](http://proficientaudio.com)

©2014 Core Brands, LLC. All rights reserved. Proficient® is a registered trademark of Core Brands, LLC, a Nortek company.

*iPod is a trademark of Apple, Inc., registered in the U.S. & other countries*

*Bluetooth is a registered trademark of Bluetooth SIG, Inc.*

*Kevlar is a registered trademark of DuPont*

*Dolby is a registered trademark of Dolby Laboratories, Inc.*

*DTS is a registered trademark of DTS, Inc.*

PAS00103-C (rev1)