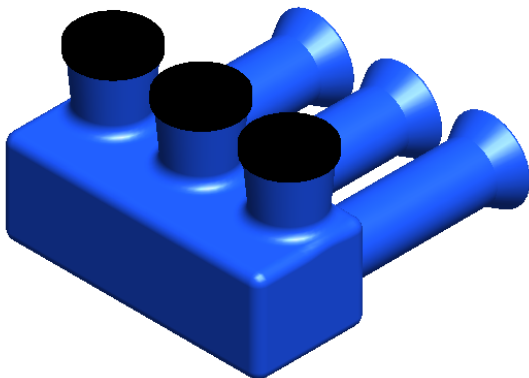


IPLW1-3 SHOWN

PART NUMBER	NO. OF PORTS	LENGTH
IPLW1-3	3	2.80
IPLW1-4	4	3.73
IPLW1-5	5	4.65
IPLW1-6	6	5.58

NOTES:

1. CONNECTOR MATERIAL: 6061-T6511 ALUMINUM ALLOY.
2. UL LISTED FOR SUBMERSIBLE USE PER UL486D SPECIFICATIONS FOR 600V.
3. DUAL RATED FOR 90°C COPPER AND/OR ALUM. CONDUCTOR.



CONTACT NSi FOR SALES @ 800.321.5847

		POLARIS SALES CO. INC	
		11625 PROSPEROUS DRIVE ODESSA, FL 33556	
PROPRIETARY AND CONFIDENTIAL THE INFORMATION CONTAINED IN THIS DRAWING IS THE SOLE PROPERTY OF POLARIS SALES CO. INC. ANY REPRODUCTION IN PART OR AS A WHOLE WITHOUT THE WRITTEN PERMISSION OF POLARIS SALES CO. INC. IS PROHIBITED.		TITLE: <h1>#1 MULTI-PORT SUBMERSIBLE CONN.</h1>	
NAME L. HILL		DATE 1/6/2012	
DWG. NO. IPLW1-			
MATERIAL: N/A		SCALE: N/A	SHEET: 1 OF 1