

FEATURES & SPECIFICATIONS

INTENDED USE

Intended for unit or row installations, surface or suspended mounting.

ATTRIBUTES

Designed exclusively for use with T8 lamps, electronic ballasts and sockets.

CONSTRUCTION

Standard channel, die formed from Code-guage steel.

Sturdy Channel cover secured by captive quarter turnlatch for easy access to wireway.

End plate and channel connector furnished with each fixture.

Housing formed from Cold rolled steel.

FINISH

Five Stage iron-phosphate pretreatment ensures superior paint adhesion and rust resistance.

Painted parts finished with high-gloss, baked white polyester.

ELECTRICAL SYSTEM

Thermally-protected, resetting, Class P, UL Listed, CSA Certified ballast is standard.

Available in Tandem wired lengths.

Luminaire is suitable for damp locations. AWM, TFN or THHN wire used throughout, rated for required temperatures.

LISTING

UL Listed to US and Canadian safety standards. Optional: Mexico NOM.

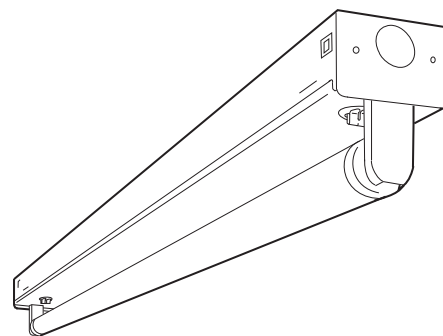
WARRANTY

Guaranteed for one year against mechanical defects in manufacture.

Catalog Number	
Notes	Type

Standard Strip

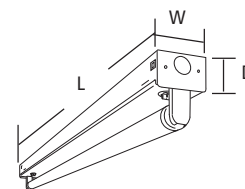
S



**Linear Lamp and
Compact Fluorescent**
1 Lamp

Specifications

Length: 18 (457), 24 (610)
36 (914), 48 (1219)
72 (1829) or 96 (2438)
Width: 2-3/4 (70)
Depth: 1-3/4 (45)
All dimensions are inches (millimeters).



ORDERING INFORMATION

For shortest lead times, configure product using **standard options (shown in bold)**.

Example: S 1 32 MVOLT GEB10IS

S	1				
Series	Number of lamps	Lamp type	Voltage	Options	
S Standard strip¹	1 Not included	25 25W T8 (36") CF27 27W TT5 (15") 17 17W T8 (24") 32 32W T8 (48") CF39 39W TT5 (18") CF40 40W TT5 (24") 60T8 40W T8 (60")	120 277 347 MVOLT Others available	GEB10IS T8 electronic ballast, ≤ 10% THD, instant start (T8 only) GEB10RS T8 electronic ballast, ≤ 10% THD, rapid start BILP IS High-efficiency .78 bf (low) GEB Electronic ballasts, ≤20% THD. GLR Internal fast-blow fuse (add X for external) GMF Internal slow-blow fuse (add X for external) CS3 6' cordset, NEMA L5-15P SJT, twist-lock plug, 120V PLF__ Plug in wiring, specify number of branch circuits and hot wires (A-black, B-Red, C-Blue, AB or AC) NOM NOM Certified	

Accessories

Order as separate catalog numbers.

SQ_ Swivel-stem hanger (specify length in 2" increments).

1B Ceiling spacer (adjusts from 1-1/2" to 2-1/2" from ceiling).

WGS Wireguard, 4' white, for unshielded S strip.¹

WGSSMR Wireguard, 4' white, for S strip with SSMR reflector.¹

WGSASR Wireguard, 4' white, for S strip with SASR reflector.¹

SSMR 48WH Symmetric reflector, 4' white.¹

SASR 48WH Asymmetric reflector, 4' white.¹

S48WG Wireguard, 4' white, Canada only

SSMR CF 24WH Symmetric reflector, 2' white.*

SASR CF 24WH Asymmetric reflector, 2' white.*

TSASR CF 24WH Asymmetric reflector, 2' white, for TS 1 CF18.*

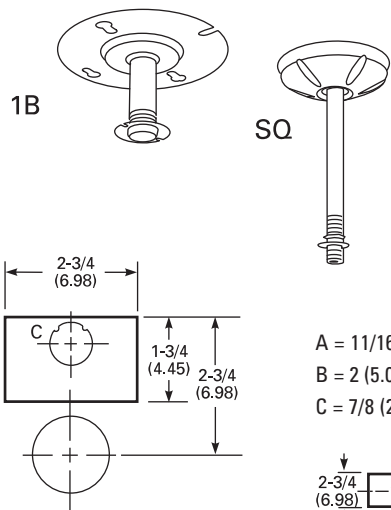
*Other lengths available. Replace **24** in catalog number with length in inches. Other finishes available. Replace **WH** in catalog number with **SSR** or other finish.

NOTES:

1 Order two for 8' fixtures.

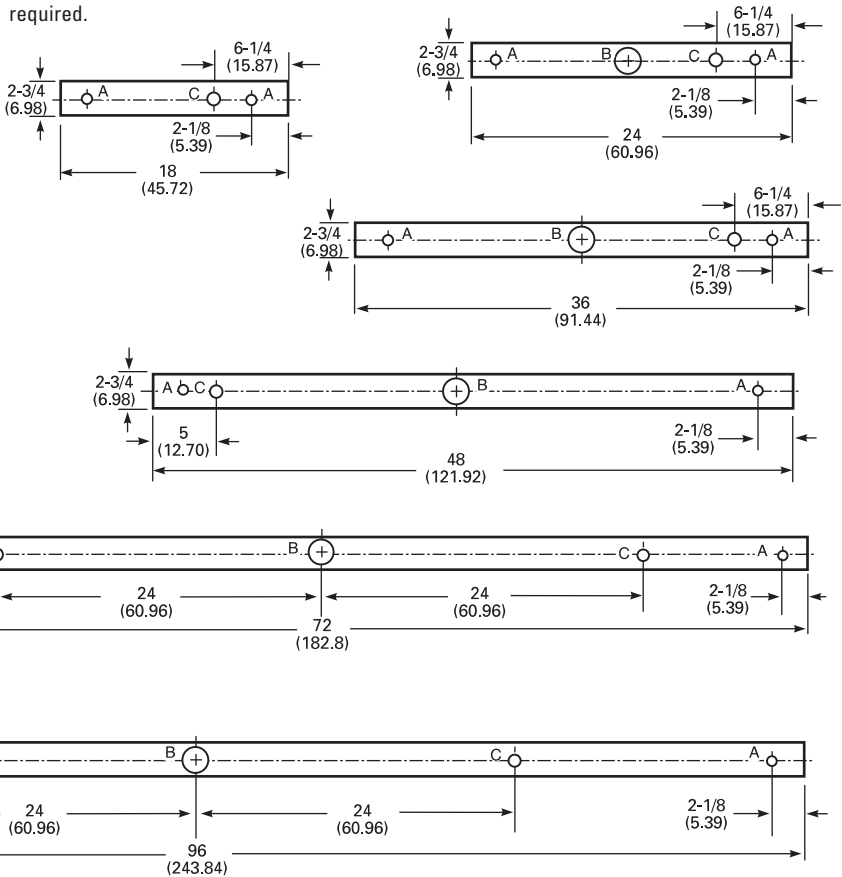
MOUNTING DATA

For unit or row installation, surface or stem mounting.
Unit installation — Minimum of two hangers required.
Row installation — One hanger per channel plus one per row required.
See ACCESSORIES below for hanging devices.



A = 11/16 (1.74) Dia. K.O.
B = 2 (5.08) Dia. K.O.
C = 7/8 (2.22) Dia. K.O.

DIMENSIONS



PHOTOMETRICS

Calculated using the zonal cavity method in accordance with IESNA LM41 procedure. Floor reflectances are 20%. Lamp configurations shown are typical. Full photometric data on these and other configurations available upon request.

S 1 32
Report LTL 5725
S/MH (along) 1.2 (across) 1.6
Coefficient of Utilization

Ceiling	80%			70%			50%		
	70%	50%	30%	70%	50%	30%	50%	30%	10%
1	97	91	86	92	87	82	79	75	72
2	87	77	70	82	74	67	67	61	56
3	78	67	58	74	64	56	58	52	46
4	71	59	50	67	56	48	51	44	38
5	65	51	42	61	49	41	45	37	32
10	43	30	22	41	28	21	26	20	15

Zonal Lumens Summary

Zone	Lumens	%Lamp	%Fixture
0-30	388	13.4	13.9
0-40	660	22.8	23.7
0-60	1307	45.1	46.9
0-90	2176	75.0	78.1
90-180	609	21.0	21.9
0-180	2786	96.1	100.0

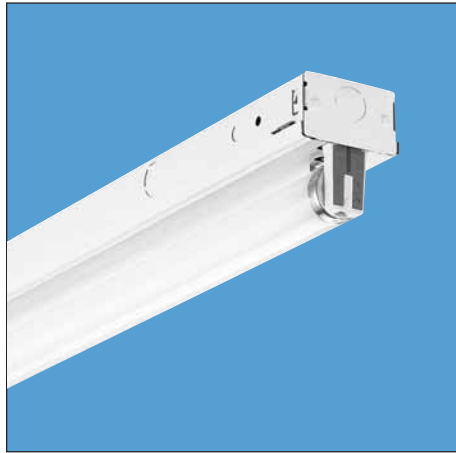
Energy (Calculated in accordance with NEMA standard LE-5)

LER.FL	ANNUAL ENERGY COST*	LAMP DESCRIPTION	LAMP LUMENS	BALLAST FACTOR	INPUT WATTS
94.7	\$2.53	(1) F3278/735	2800	.88	25

* Comparative yearly lighting energy cost per 1000 lumens

Standard Striplights

S



Intended Use

For applications that require medium illumination levels and narrow construction. Suitable for general or task lighting.

Features

Slim channel for easy handling in unit or row, ceiling or wall-mount applications.

High-gloss, baked enamel finish.

Combination end plate/channel connector furnished.

White or specular reflectors available.

Channel cover retained by quarter-turn fastener.

Listings

UL Listed (standard) and CSA Certified (standard; except for 347V – see Options). NOM Certified (see Options).

Ordering Information

Series
S
Fortandem double-length unit, add prefix T. ¹ Example: TS

Number of lamps
1
Not included.

Lamp type
15 15W T12 (18")
15PH 15W T12 (18")
17 17W T8 (24")
20 20W T12 (24")
20PH 20W T12 (24")
25 25W T8 (36")
30 30W T12 (36")
30PH 30W T12 (36")
32 32W T8 (48")

Voltage
MVOLT
120
277
347

Ballast options
LPF Low power factor (for 15W, 20W, 30W only)
HPF High power factor (for 15W, 20W, 30W only)
GEB10IS T8 electronic ballast, instant start
GEB10RS T8 electronic ballast, rapid start

Options
CSA CSA Certified (347V only)
NOM NOM Certified
See page 113 for others.

NOTES:

- Order two 36" reflectors for 72" fixtures and two 48" reflectors for 96" fixtures.
- Maximum depth to center of lamps.

Reflector Accessories (Order separately)

Reflector type	Length	Finish
SASR Asymmetric	24 24" nominal	(blank) White
SSMR Symmetric	36 36" nominal ¹	SSR Specular silver, steel
	48 48" nominal ¹	

lightquick[®] XD

Express delivery products.

See page 11 for details about LightQuick XD.

Description

S 1 32 MVOLT GEB10IS

Availability and Dimensions

Nominal length	Series	Lamps per cross section	Lamps per fixture	Lamp type	Width in. (cm)	Depth ² in. (cm)	Length in. (cm)
1½'	S	1	1	15, 15PH	2¾ (7.0)	2¾ (7.0)	18 (45.7)
2'	S	1	1	17, 20, 20PH	2¾ (7.0)	2¾ (7.0)	24 (61.0)
3'	S	1	1	25, 30	2¾ (7.0)	2¾ (7.0)	36 (91.4)
4'	S	1	1	32	2¾ (7.0)	2¾ (7.0)	48 (121.9)
6'	TS	1	2	25, 30	2¾ (7.0)	2¾ (7.0)	72 (182.9)
8'	TS	1	2	32	2¾ (7.0)	2¾ (7.0)	96 (243.8)

www.lithonia.com, keyword: S

PSG9