

## FEATURES & SPECIFICATIONS

**INTENDED USE** — Typical applications include corridors, lobbies, conference rooms and private offices.

**CONSTRUCTION** — LP6LN (New Construction): Rugged, 16-gauge galvanized steel mounting frame with torsion spring bracket to mount the finishing module. Vertically adjustable mounting brackets that use 16-gauge flat bar hangers (included), 1/2" conduit or C channel T-bar fasteners. Provides 3-3/4" total height adjustment.

6VL (New Construction): Galvanized steel mounting/plaster frame with torsion spring bracket to mount the finishing module. Integral galvanized bar hangers span up to 24" o.c. and feature built-in T-bar clips and nailers for T-bar or wood joist installations.

6VLR (Remodel): Galvanized steel remodel mounting/plaster frame with torsion spring bracket to mount the finishing module. Four (4) remodel ARC clips included for remodel installation.

All frames are equipped with galvanized steel junction box UL Listed for through wire applications. Junction boxes equipped with two combination 1/2"-3/4" and three 1/2" knockouts for straight-through conduit runs and removable access doors. Capacity: 4 (2 in, 2 out), No. 12 AWG conductors, rated for 90°C.

Post installation adjustment possible from below the ceiling.

Maximum 1-1/2" ceiling thickness.

**LED Trim:** Rugged, one-piece, die-cast heat sink design for optimum thermal management. Wet location rated lens is tightly fitted to the housing to reduce the ingress of dust.

**OPTICS** — Elliptical upper reflector and micro prism lens, provides precise beam control. Lower splay recesses optical system into the ceiling to reduce glare and provide a traditional PAR look. Standard fixture has a 0.65 spacing criteria. The luminaire is also available with a 0.95 spacing criteria option for use in general/ambient lighting applications.

CRI>80.

**ELECTRICAL** — On-board circuitry to ensure against wiring errors.

Thermal protection provided against improper insulation use.

High-efficiency, electronic LED 0-10V dimming driver mounted to the junction box, dims luminaire to 15% light output.

For dimming fixture requires two (2) additional low-voltage wires to be pulled.

The system maintains 70% lumen output for more than 50,000 hours.

Input wattage for 1000L is 14.2W, 74 lumens per watt. Input wattage for 1500L is 18.8W, 85 lumens per watt.

Actual wattage may differ by +/-15% when operating between 120-277V +/-10%.

**LISTINGS** — CSA certified to US and Canadian safety standards. Wet location listed.

**WARRANTY** — 5-year limited warranty. Complete warranty terms located at

[www.acuitybrands.com/CustomerResources/Terms\\_and\\_conditions.aspx](http://www.acuitybrands.com/CustomerResources/Terms_and_conditions.aspx)

Note: Actual performance may differ as a result of end-user environment and application.

All values are design or typical values, measured under laboratory conditions at 25 °C.

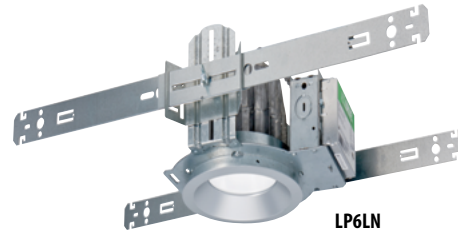
Specifications subject to change without notice.

|                |
|----------------|
| Catalog Number |
| Notes          |
| Type           |

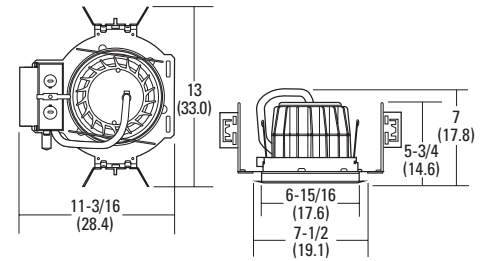
6" LED



Non-IC  
New Construction



LP6LN



*Specifications*

- Aperture: 4-3/8 (11.1)
- Ceiling opening: 6-15/16 (17.6)
- Overlap trim: 7-1/2 (19.1)
- Height: 7 (17.8)

All dimensions are inches (centimeters) unless otherwise noted.

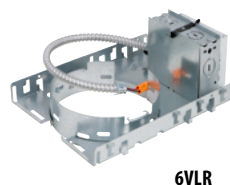
**ORDERING INFORMATION**

Lead times will vary depending on options selected. Consult with your sales representative.

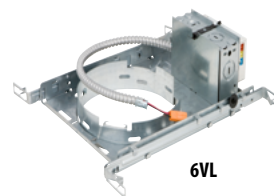
**Example:** REAL6C D6MW ESL 1500L 35K .95SC 277 LP6LN

| REAL6C D6                             | ESL  |  |  |  |                                |  |   |  |
|---------------------------------------|------|--|--|--|--------------------------------|--|---|--|
| Series/Finish                         | Type | Lumen output <sup>1</sup>                            | Color temperature                                | Distribution   | Voltage                        | Mounting pan   | Options   |  |
| Series<br>REAL6C D6 6" open downlight | ESL  | 1000L 14.2W, 1000 lumens<br>1500L 18.8W, 1500 lumens | 27K 2700K<br>30K 3000K<br>35K 3500K<br>40K 4000K | .65SC .65 Spacing criteria<br>.95SC .95 Spacing criteria | 120<br>277<br>347 <sup>2</sup> | LP6LN 1000L <sup>3</sup><br>LP6LN 1500L <sup>3</sup><br>6VL 1000L <sup>3</sup><br>6VL 1500L <sup>3</sup><br>6VLR 1000L <sup>3</sup><br>6VLR 1500L <sup>3</sup> | PFMW Matte white plastic flange ring<br>PFBL Black plastic flange ring<br>ELR Emergency battery pack with remote test switch <sup>4</sup><br>GMF Single slow-blow fuse, must specify voltage<br>ISH Insect shield |  |

|   |  |
|---|--|
| <b>Accessories:</b> Order as separate catalog number. |  |
| NPP16 D   | nLight® network relay pack with 0-10V dimming. Refer to TN-602.  |
| NPP16 D ER  | nLight® network relay pack with 0-10V dimming for emergency circuit operation. Refer to TN-602. <sup>5</sup> |



6VLR



6VL

**Notes**

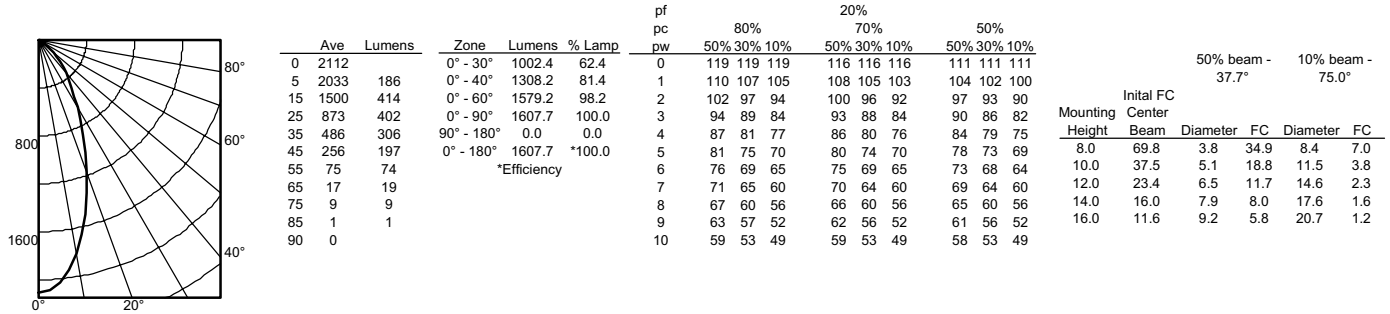
- Total system nominal delivered lumens.
- Using step-down transformer increases power draw by 15 watts.
- Lumens only required when ordered separately.
- Not available with 347V.
- For use with generator supply EM power. Will require an emergency hot feed and normal hot feed.

# REALITY™ 6" LED

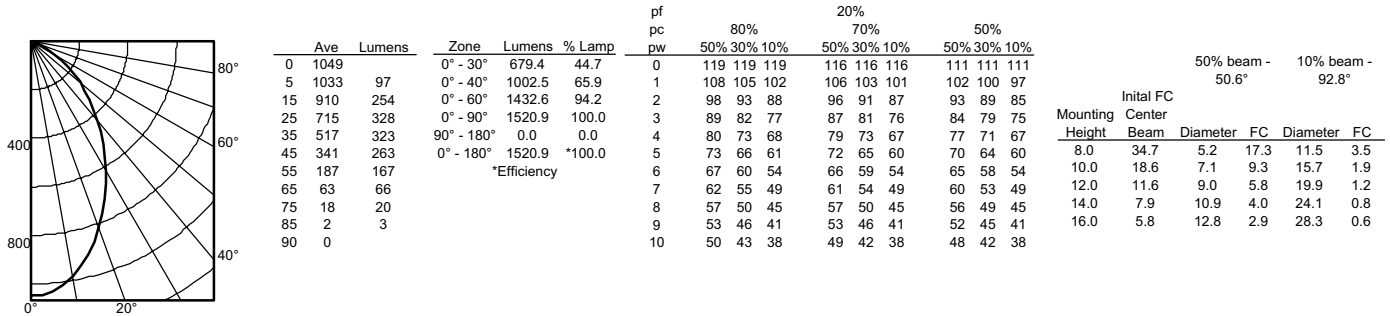
## PHOTOMETRICS

Distribution Curve      Distribution Data      Output Data      Coefficient of Utilization      Illuminance Data at 30" Above Floor for a Single Luminaire

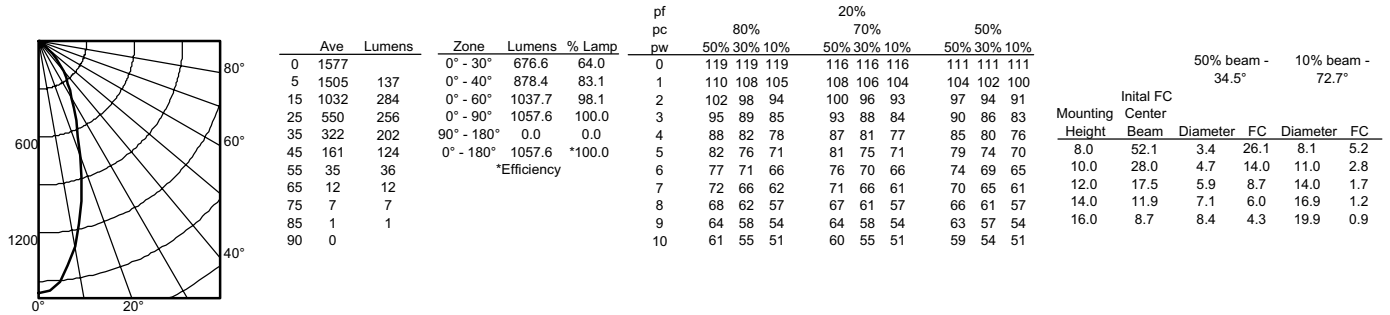
**REAL6C D6MW ESL 35K 1500L .65SC**, input watts: 18.8, delivered lumens: 1607, .65 spacing, LM/W=85, test no. LTL21387



**REAL6C D6MW ESL 1500L 35K .95SC**, input watts: 18.8, delivered lumens: 1520, .95 spacing, LM/W=81, test no. LTL21389



**REAL6C D6MW ESL 1000L 35K .65SC**, input watts: 14.2, delivered lumens: 1057, .65 spacing, LM/W=74, test no. LTL21373



| Color temperature | Lumen multiplier |
|-------------------|------------------|
| 27K               | 0.83             |
| 30K               | 0.94             |
| 35K               | 1.00 (Baseline)  |
| 40K               | 1.03             |

| EMERGENCY LUMEN OUTPUT |                |
|------------------------|----------------|
| Lumens                 | Initial Output |
| 1000                   | 180lms         |
| 1500                   | 270lms         |

| Trim finish             | Lumen multiplier |
|-------------------------|------------------|
| Clear Diffuse (A)       | 1.01             |
| Matte White (MW)        | 1.00             |
| Clear Specular (AZ)     | 1.00             |
| Wheat (WT)              | 0.98             |
| Brushed Nickel (BN)     | 0.97             |
| Black Specular (BLZ)    | 0.96             |
| Antique Bronze (BZA)    | 0.95             |
| Oil-Rubbed Bronze (ORB) | 0.95             |

| COMPATIBLE DIMMER SWITCHES |   |
|----------------------------|---|
| Manufacturer               | Model number  |
| Synergy®                   | ISD BC 120/277  |
| Leviton®                   | IP710-DLX   |
| Lutron®                    | NTFTV-WH<br>For on/off control, this switch requires a power pack. Consult Lutron for more information. |