

FEATURES & SPECIFICATIONS

INTENDED USE — Intended for low to medium mounting heights where dust, dirt, humidity, moisture, or corrosive elements are present. Aluminum body (AL) option provides corrosion protection against moisture and humidity. Ideal for canopies, dock areas, wastewater treatment, refrigerated areas and other non-hazardous environments. Certain airborne contaminants can diminish integrity of plastics. **Certain airborne contaminants can diminish integrity of acrylic and/or polycarbonate.** [Click here for Acrylic-Polycarbonate Compatibility table for suitable uses.](#)

CONSTRUCTION — Welded steel or aluminum housing is fully gasketed and post-painted for corrosion resistance. Captive, corrosion resistant pivot latches to secure the diffuser, six on 4' units and ten on 8' units. Cast zinc wet location fittings standard on DMSW for ½" rigid conduit entry.

Finish: Painted parts pretreated with a five-stage iron-phosphate process to ensure superior paint adhesion and corrosion resistance, then finished with a high-gloss, baked white enamel.

OPTICS — High-impact Acrylic diffuser with a stippled interior surface to spread lamp image. Deep lens is standard on 48HO, 96T8HO, 48T8HO, 96HO and all tandem fixtures. When row mounting eight foot and four foot fixtures in the same row, order four foot fixtures with ARDP option to match.

ELECTRICAL — Thermally protected, resetting, Class P, HPF, non-PCB, UL listed, CSA certified ballast is standard. Sound rating depends on lamp/ballast combination. AWM, TFN or THHN wire used throughout, rated for required temperatures.

INSTALLATION — For unit or row installations, covered ceiling surface or suspended (damp only) mounting.

LISTINGS — UL Listed for wet locations in covered-ceiling applications. CSA Certified (see Options). NOM Certified (see Options). UL listed 25°C ambient temperatures.

WARRANTY — 1-year limited warranty. Complete warranty terms located at www.acuitybrands.com/CustomerResources/Terms_and_conditions.aspx

Note: Actual performance may differ as a result of end-user environment and application.

Specifications subject to change without notice.

Catalog Number
Notes
Type

Enclosed and Gasketed Industrial



DMS/DMSW

HIGH OUTPUT

4' or 8' length
1 or 2 lamps

Specifications

Length:	51 (129.5) 99 (251.5)
Width:	8-5/8 (21.9)
Depth with standard lens:	5-5/8 (14.3)
Depth with deep lens:	6-1/8 (15.6)

All dimensions are inches (centimeters) unless otherwise specified.

ORDERING INFORMATION

For shortest lead times, configure products using **standard options (shown in bold)**.

Example: DMS 2 48T8HO MVOLT GEB10PS

Series	Number of lamps	Lamp type	Diffuser	Voltage	Ballast	Options
DMS Damp location	1	28T5 28W T5 (48")	(blank) High-impact acrylic (50% DR)	120	GEB101S T8 electronic ballasts, <10% THD, instant start	<u>Shipped installed in fixture</u>
DMSW Wet location	2	32 32W T8 (48")		277		EL14DW Emergency battery pack (nominal 1400 lumens) ^{3,4}
	3 ¹	48HO 60W 800mA (48")	ARDP Deep high-impact acrylic (50% DR) ²	347	GEB10PS Electronic ballasts, <10% THD, program rapid start	GLR Internal fast-blow fusing ⁴
		54T5HO 54W T5HO (48")		MVOLT		GMF Internal slow-blow fusing ⁴
		96T8 59W T8 slimline				RIF1 Radio interference filter (one per fixture)
		96T8HO 86W T8 389mA (96")			GEB10PS90 T5HO electronic ballasts, <10% THD, program rapid start	AL Aluminum body
		48T8HO 44W T8HO (48")				WLF Wet location fittings (1 pair, installed in fixture top)
		96HO 110W T12 800mA (96")				CSA CSA certified
						NOM NOM certified
						BDP Ballast disconnect ⁵

CONFIGURATIONS

Series	Lamps per cross section	Lamps per fixture	Lamp type	Width	Depth	Length
DMS, DMSW	1, 2, 3	1, 2, 3	28T5, 32	8-5/8 (2.9)	5-1/4 (13.3)	51 (129.5)
DMS, DMSW	1, 2	1, 2	54T5HO	8-5/8 (2.9)	6-1/8 (15.6)	51 (129.5)
DMS, DMSW (ARDP)	1, 2, 3	1, 2, 3	28T5, 32	8-5/8 (2.9)	6-1/8 (15.6)	51 (129.5)
DMS, DMSW (ARDP)	1, 2	1, 2	54T5HO	8-5/8 (2.9)	6-1/8 (15.6)	51 (129.5)
DMS, DMSW	1, 2	1, 2	48T8HO	8-5/8 (2.9)	6-1/8 (15.6)	51 (129.5)
DMS, DMSW	1, 2	1, 2	96HO, 96T8	8-5/8 (2.9)	6-1/8 (15.6)	98-3/8 (248.9)
DMS, DMSW	2	2	96T8HO	8-5/8 (2.9)	6-1/8 (15.6)	98-3/8 (248.9)
TDMS, TDMSW	1, 2, 3	2, 4, 6	28T5, 32	8-5/8 (2.9)	6-1/8 (15.6)	98-3/8 (248.9)
TDMS, TDMSW	1, 2	2, 4	54T5HO	8-5/8 (2.9)	6-1/8 (15.6)	98-3/8 (248.9)
TDMS, TDMSW	2	4	48T8HO	8-5/8 (2.9)	6-1/8 (15.6)	98-3/8 (248.9)

Accessories: Order as separate catalog number.

SQ	Swivel stem hanger (specify length in 2" increments). ⁶
1B	Ceiling spacer (1-1/2" to 2-1/2" from ceiling). ⁶
WLF	Wet location fittings (1 pair, not installed).

Notes

- 32W T8 lamps only.
- Deep lens is standard on 8' fixtures.
- Luminaires ordered with ELDW option (example: ELSDW) will bear UL emergency lighting equipment label for damp or wet location, depending on fixture.
- Must specify voltage. Not available with MVOLT.
- Meets codes that require in-fixture disconnect. Not available with EL or cord options.
- Hanging devices suitable for damp locations only.

DMS High Output

MOUNTING DATA

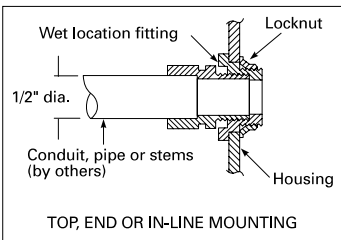
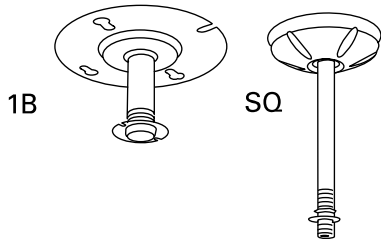
For unit or row installation, suspended mounting.

Unit installation — Minimum of two hangers required. Recommend 1/2" nipple with union (by others) for DMSW.

Row installation — One hanger per channel plus one per row required. Recommended 1/2" nipple with union (by others) for DMSW.

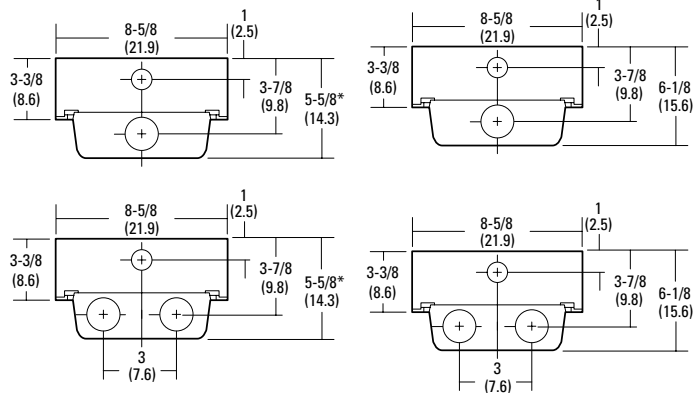
DMSW — Includes gasketed wet location fittings on ends for power feeding/mounting. Fitting is threaded for 1/2" rigid conduit. No KOs or mounting holes provided. Drill mounting holes and attach to surface using fasteners and sealing washers (by others) appropriate to ceiling material.

See ACCESSORIES below for hanging devices.

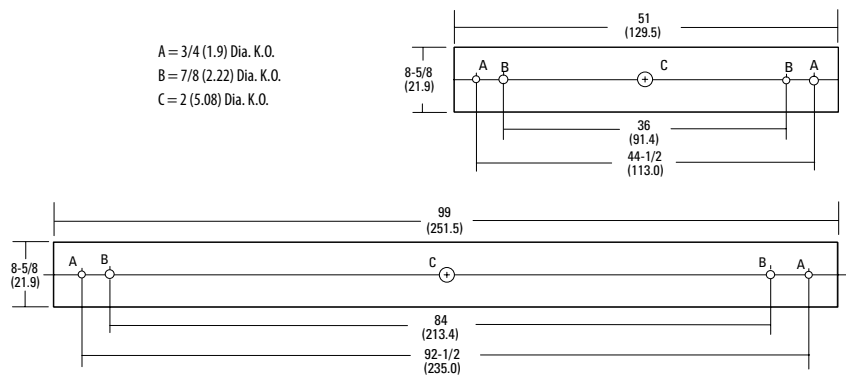


DIMENSIONS

Inches (centimeters). Subject to change without notice.



*Note: Dimension for standard depth lens installed.



PHOTOMETRICS

See www.lithonia.com.