

FEATURES & SPECIFICATIONS

INTENDED USE — High performance parabolic luminaires for use in open area applications and electronic offices where optical control, visual comfort and light cut-off are important.

Design optimized for use with T8 lamps and low-profile electronic ballasts.

Choice of diffuse or specular louvers utilizing the latest developments in louver finishing for minimized louver iridescence.

CONSTRUCTION — Black reveal provides floating louver appearance, conceals optional air-supply slots.

Square corner end plates improve strength and durability.

Integral T-bar safety clips hold fixture to T-bar securely; no fasteners required.

Heavy-gauge hinges die-formed for maximum strength; spring action latches concealed in black reveal.

Housing formed from cold-rolled steel. Louver formed from anodized aluminum. No asbestos used in this product.

Overlapping flange and modular ceiling trims available factory installed with swing gate hangers or field convertible with optional trim and hangers.

FINISH — Five-stage iron-phosphate pretreatment ensures superior paint adhesion. Painted parts finished with high-gloss, baked white enamel.

ELECTRICAL SYSTEM — Thermally protected, resetting, Class P, HPF, non-PCB, UL Listed, CSA certified ballast is standard.

Electronic ballasts are sound rated A.

Ballast disconnect provided standard where required to comply with US and Canadian electrical codes.

Fixture conforms to UL1570 and is suitable for damp locations. AWM, TFN or THHN wire used throughout, rated for required temperatures.

LISTING — UL Listed (Standard), CSA Certified or NOM Certified (see Options).

WARRANTY — 1-year limited warranty. Complete warranty terms located at www.acuitybrands.com/CustomerResources/Terms_and_conditions.aspx

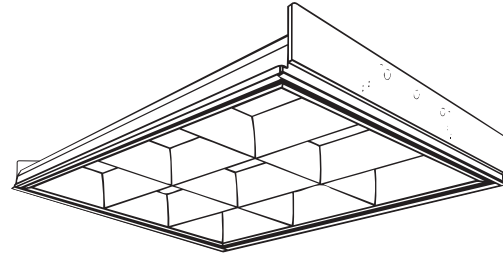
Note: Actual performance may differ as a result of end-user environment and application.

Specifications subject to change without notice.

Catalog Number
Notes
Type

PARAMAX® Parabolic Troffer

2PM3N 2'x2'



3" Louver Family
Straight Lamps

Specifications

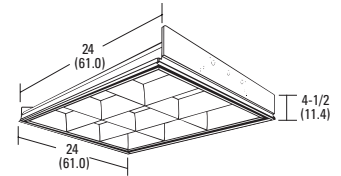
Length: 24 (60.9)

Width: 24 (60.9)

Depth: 4-1/2 (11.4)

Weight: 16 lbs (7.3 kg)

All dimensions are inches (centimeters) unless otherwise specified.



ORDERING INFORMATION

For shortest lead times, configure products using **bolded options**.

Example: 2PM3N G B 3 17 9LD MVOLT 1/3 GEB10IS

2PM3N						17			
Series	Trim type	Air function	Number of lamps	Lamp type	Number of cells ¹	Louver finish	Voltage		
2PM3N Paramax 3" louver family	G Grid	B No air function	2	17 17W T8 (24")	6	LD Low iridescent anodized diffuse silver	MVOLT ² 120 277 347 (Others available)		
	F Overlapping flange	A Air supply/return (slots in side trim)	3		9			LS Low iridescent anodized specular silver	
	ST Screw slot	D Dual function supply/ return/removal	4 (Not included)		12 16				
Options ³									
1/3	One 3-lamp ballast	PWS1836	6' prewire, 3/8" dia., 18-gauge, 3 wires	ACS	Air closure strips (A and D models only)				
1/4	One 4-lamp ballast	PWS1846	6' prewire, 3/8" dia., 18-gauge, 4 wires	APB	Air-pattern control blades (A and D models only)				
1/4/1/2	Use with LST. One 4-lamp and one 2-lamp ballast	QFC213_	Reloc Quick-Flex 12/3G, 13' ^{4,5}	PAF	Painted after fabrication (white enamel)				
GEB10IS	Electronic ballast, ≤10% THD, instant start	LST	Tandem fixture pairs (shared ballasts)	2R	Two reflector channel covers ⁶				
GEB10PS	Electronic ballast, ≤10% THD, programmed start	LP_	Lamped, specify lamp type and color	JP	Palletized and stretch-wrapped (G trim only)				
GEB10RS	Electronic ballast, ≤10% THD, rapid start	GLR	Internal fast-blow fuse ⁵	CSA	CSA certified				
EL	Emergency battery pack (nominal 500 lumens)	GMF	Internal slow-blow fuse ⁵	NOM	NOM certified				
EL14	Emergency battery pack								

Notes

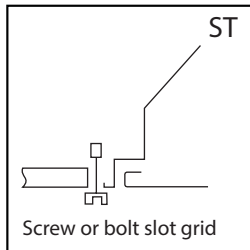
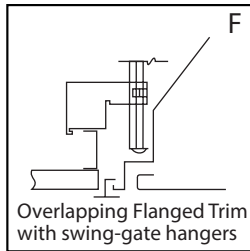
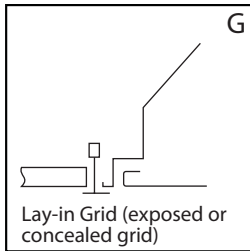
- Standard louver configuration:
2 lamps = 6 cells, diffuse silver
3 lamps = 9 cells, diffuse silver
4 lamps = 16 cells, diffuse silver
- MVOLT standard for 120V and 277V applications. Some options require voltage specified.
- Some options increase fixture depth. Consult factory if plenum space is a concern.
- Must specify circuit wiring. Refer to www.lithonia.com/Reloc for additional information.
- Must specify voltage.
- Available with 3-lamp versions only.

2PM3N 2'x2' Straight Lamps, 3" Louver Family

MOUNTING DATA

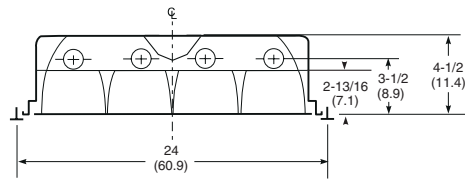
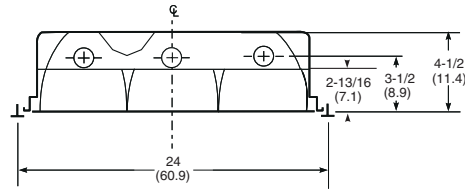
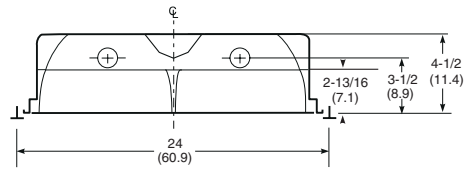
Continuous row mounting of flanged units requires CRE and CRM trim options. Consult factory.

Mounting Information - Trim Types	
Ceiling type	Appropriate trim type
Exposed grid tee	G
Concealed grid tee	G,ST
Concealed Z-spline	F
Screw slot (consult factory)	ST
Acoustical tile, plaster or plasterboard on rigid support parallel to lamps	F



DIMENSIONS

All dimensions are inches (centimeters) unless specified otherwise.



Notes

1 Recommended rough-in dimensions for F trim fixtures 24"x24". (Tolerance is +1/4", -0") Swing-gate range 1" to 4-3/16", span 23-1/2" to 26-5/16".

PHOTOMETRICS

Full photometric data available upon request.

TEST NO: LTL15075
2PM3N 217 6
LUMENS PER LAMP: 1350

TEST NO: LTL15074
2PM3N 317
LUMENS PER LAMP: 1350

TEST NO: LTL15076
2PM3N 417
LUMENS PER LAMP: 1350

ROR	pf	Coefficients of Utilization										
		20%			30%			10%				
		50%	30%	10%	50%	30%	10%	50%	30%	10%		
0	90	90	90	84	84	84	80	80	80			
1	81	78	75	76	74	72	73	71	70			
2	71	67	63	67	64	61	65	62	59			
3	63	57	53	60	55	52	58	54	51			
4	56	50	45	53	48	44	51	47	44			
5	50	43	39	48	42	38	46	41	38			
6	45	38	34	43	37	33	42	37	33			
7	41	34	30	39	33	29	38	33	29			
8	37	31	26	35	30	26	34	29	26			
9	34	28	23	32	27	23	32	27	23			
10	31	25	21	30	25	21	29	24	21			

ROR	pf	Coefficients of Utilization										
		20%			30%			10%				
		50%	30%	10%	50%	30%	10%	50%	30%	10%		
0	82	82	82	77	77	77	73	73	73			
1	74	72	69	70	68	66	67	65	64			
2	66	62	59	62	59	57	60	58	55			
3	59	54	50	56	52	49	54	51	48			
4	53	47	43	50	46	42	48	45	42			
5	47	42	37	45	40	37	44	40	36			
6	43	37	33	41	36	32	40	35	32			
7	39	33	29	37	32	29	36	32	29			
8	35	30	26	34	29	26	33	29	26			
9	32	27	23	31	26	23	31	26	23			
10	30	25	21	29	24	21	28	24	21			

ROR	pf	Coefficients of Utilization										
		20%			30%			10%				
		50%	30%	10%	50%	30%	10%	50%	30%	10%		
0	75	75	75	70	70	70	67	67	67			
1	67	65	64	63	62	61	61	60	59			
2	61	57	54	57	55	52	55	53	51			
3	54	50	47	52	48	45	50	47	45			
4	49	44	40	47	43	40	45	42	39			
5	44	39	36	42	38	35	41	37	35			
6	40	35	31	38	34	31	37	34	31			
7	37	32	28	35	31	28	34	30	28			
8	33	29	25	32	28	25	32	28	25			
9	31	26	23	30	26	23	29	25	23			
10	28	24	21	28	23	21	27	23	21			

Zonal Lumen Summary			
Zone	Lumens	% Lamp	% Fixture
0° - 30°	563.4	20.9	27.6
0° - 40°	964.5	35.7	47.3
0° - 60°	1853.1	68.6	90.8
0° - 90°	2040.2	75.6	100.0
90° - 180°	0.0	0.0	0.0
0° - 180°	2040.2	75.6	100.0

Zonal Lumen Summary			
Zone	Lumens	% Lamp	% Fixture
0° - 30°	880.3	21.7	31.5
0° - 40°	1516.3	37.4	54.3
0° - 60°	2576.7	63.6	92.2
0° - 90°	2793.9	69.0	100.0
90° - 180°	0.0	0.0	0.0
0° - 180°	2793.9	69.0	100.0

Zonal Lumen Summary			
Zone	Lumens	% Lamp	% Fixture
0° - 30°	1224.9	22.7	36.2
0° - 40°	1994.0	36.9	58.9
0° - 60°	3191.9	59.1	94.3
0° - 90°	3384.0	62.7	100.0
90° - 180°	0.0	0.0	0.0
0° - 180°	3384.0	62.7	100.0