



## FLUORESCENT BI-PIN/MEDIUM BASE HID



**Class I, Div. 2, Groups A,B,C,D\***  
**Class I, Zone 2, Groups IIC,IIB,IIA**  
**Class II, Div. 1 & 2, Groups E,F,G\***  
**Class III**  
**Suitable for wet locations**  
**Marine Rated (US Only)**  
**NEMA 3, 4X**

**UL LISTED** - Files E10514 and E91793 (Marine)  
**SP** Certified - File LR11713

### FEATURES-SPECIFICATIONS



#### Applications

CertiLite® MB fixtures are designed for installations where moisture, dirt, dust, corrosion and vibration may be present, or NEMA 3 and 4X areas where wind, water, snow or high ambients can be expected. They can be used in locations made hazardous by the presence of flammable vapors or gases or combustible dusts as defined by the NEC.

Typical applications include manufacturing plants, and certain chemical and petrochemical processing facilities, sewage treatment plants, off-shore and dockside installations, garages and storage facilities.

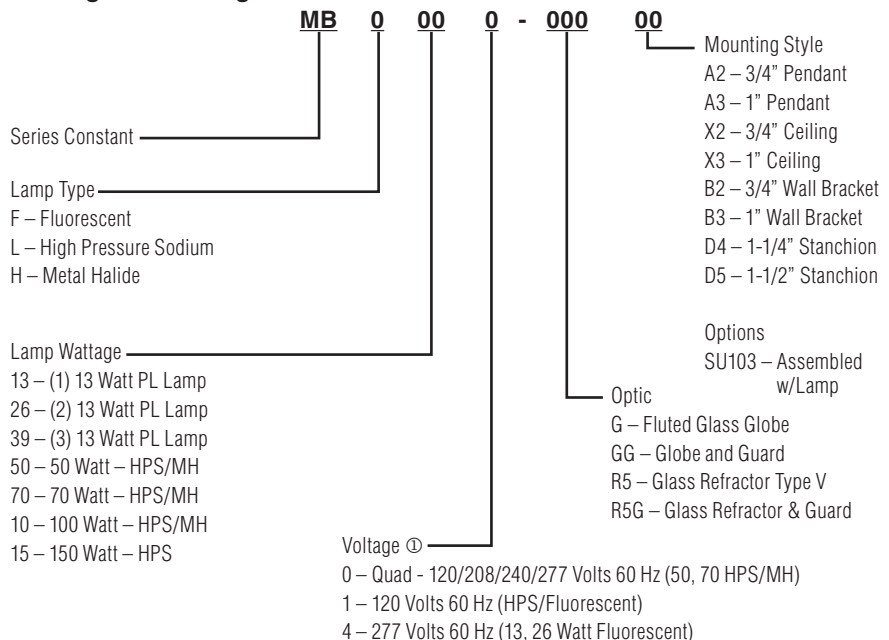
#### Features

- Ballast tank and splice box – corrosion resistant copper-free aluminum alloy
- Baked powder epoxy/polyester finish, electrostatically applied for complete, uniform corrosion protection
- All external hardware – stainless steel
- Guard – copper-free aluminum alloy
- Normally shipped as components for quick delivery
- Refractor guard – steel with corrosion resistant finish
- Reflector – lightweight, corrosion resistant fiberglass reinforced polyester
- Fluorescent models furnished with lamps. Energy efficient instant on white light (2700K). 10,000 hour lamp life
- HID lamp holders are E26 medium base

#### Compliances

- UL-1572 Standard for HID lighting fixtures
- UL-1570 Standard for Fluorescent fixtures
- UL Marine type lighting fixtures (HID models) UL-844 Standard for lighting fixtures for hazardous locations, Class I, Division 2; Class II, Divisions 1 and 2; Class III
- CSA C22.2 no. 137-M1981 electric luminaires for use in hazardous locations
- Enclosed and gasketed
- NEMA 3, 4X

#### Catalog Number Logic



① Consult factory for available lamp and voltage combinations.

\* See hazardous location application data on page L72 for limitations.

# LIGHTING

MB SERIES



## HIGH PRESSURE SODIUM, 50-150W MEDIUM BASE HID



### FEATURES-SPECIFICATIONS

Pendant



| PENDANT 50-150W HIGH PRESSURE SODIUM |                 |                       |                            |                             |                     |
|--------------------------------------|-----------------|-----------------------|----------------------------|-----------------------------|---------------------|
| LAMP TYPE                            | LAMP WATTS/ANSI | HUB SIZE <sup>②</sup> | VOLTAGE 60 HZ <sup>①</sup> | CATALOG NUMBER <sup>②</sup> |                     |
|                                      |                 |                       |                            | GLOBE AND GUARD             | REFRACTOR AND GUARD |
| HPS                                  | 50 (S68)        | 3/4"                  | 120                        | MBL501-GGA2                 | MBL501-R5GA2        |
|                                      | 70 (S62)        | 3/4"                  | 120                        | MBL701-GGA2                 | MBL701-R5GA2        |
|                                      | 100 (S54)       | 3/4"                  | 120                        | MBL101-GGA2                 | MBL101-R5GA2        |
|                                      | 150 (S55)       | 3/4"                  | 120                        | MBL151-GGA2                 | MBL151-R5GA2        |

Ceiling



| CEILING 50-150W HIGH PRESSURE SODIUM |                 |                       |                            |                             |                     |
|--------------------------------------|-----------------|-----------------------|----------------------------|-----------------------------|---------------------|
| LAMP TYPE                            | LAMP WATTS/ANSI | HUB SIZE <sup>②</sup> | VOLTAGE 60 HZ <sup>①</sup> | CATALOG NUMBER <sup>②</sup> |                     |
|                                      |                 |                       |                            | GLOBE AND GUARD             | REFRACTOR AND GUARD |
| HPS                                  | 50 (S68)        | 3/4"                  | 120                        | MBL501-GGX2                 | MBL501-R5GX2        |
|                                      | 70 (S62)        | 3/4"                  | 120                        | MBL701-GGX2                 | MBL701-R5GX2        |
|                                      | 100 (S54)       | 3/4"                  | 120                        | MBL101-GGX2                 | MBL101-R5GX2        |
|                                      | 150 (S55)       | 3/4"                  | 120                        | MBL151-GGX2                 | MBL151-R5GX2        |

Wall



| WALL 50-150W HIGH PRESSURE SODIUM |                 |                       |                            |                             |                     |
|-----------------------------------|-----------------|-----------------------|----------------------------|-----------------------------|---------------------|
| LAMP TYPE                         | LAMP WATTS/ANSI | HUB SIZE <sup>②</sup> | VOLTAGE 60 HZ <sup>①</sup> | CATALOG NUMBER <sup>②</sup> |                     |
|                                   |                 |                       |                            | GLOBE AND GUARD             | REFRACTOR AND GUARD |
| HPS                               | 50 (S68)        | 3/4"                  | 120                        | MBL501-GGB2                 | MBL501-R5GB2        |
|                                   | 70 (S62)        | 3/4"                  | 120                        | MBL701-GGB2                 | MBL701-R5GB2        |
|                                   | 100 (S54)       | 3/4"                  | 120                        | MBL101-GGB2                 | MBL101-R5GB2        |
|                                   | 150 (S55)       | 3/4"                  | 120                        | MBL151-GGB2                 | MBL151-R5GB2        |

Stanchion



| STANCHION 50-150W HIGH PRESSURE SODIUM |                 |                       |                            |                             |                     |
|--|-----------------|-----------------------|----------------------------|-----------------------------|---------------------|
| LAMP TYPE                              | LAMP WATTS/ANSI | HUB SIZE <sup>②</sup> | VOLTAGE 60 HZ <sup>①</sup> | CATALOG NUMBER <sup>②</sup> |                     |
|  |                 |                       |                            | GLOBE AND GUARD             | REFRACTOR AND GUARD |
| HPS                                    | 50 (S68)        | 1-1/4"                | 120                        | MBL501-GGD4                 | MBL501-R5GD4        |
|  | 70 (S62)        | 1-1/4"                | 120                        | MBL701-GGD4                 | MBL701-R5GD4        |
|  | 100 (S54)       | 3/4"                  | 120                        | MBL101-GGD4                 | MBL101-R5GD4        |
|  | 150 (S55)       | 1-1/4"                | 120                        | MBL151-GGD4                 | MBL151-R5GD4        |
|  | 150             | 1-1/4"                | 120                        | MBL151-GGD4                 | MBL151-R5GD4        |

<sup>①</sup> Catalog numbers shown are 120. Consult factory for other available voltages.

<sup>②</sup> Catalog numbers shown with 3/4" conduit openings (1-1/4" on stanchion mount) and includes globe and guard or IES type V 8" glass refractor and guard. See catalog logic for other possible configurations.

\* See Hazardous Location Application Data on page L72 for limitations.



METAL HALIDE, 50-100W MEDIUM BASE HID



**ORDERING INFORMATION**

Pendant



| PENDANT 50-100W METAL HALIDE |                 |                       |                            |                             |                     |
|------------------------------|-----------------|-----------------------|----------------------------|-----------------------------|---------------------|
| LAMP TYPE                    | LAMP WATTS/ANSI | HUB SIZE <sup>②</sup> | VOLTAGE 60 HZ <sup>①</sup> | CATALOG NUMBER <sup>②</sup> |                     |
|                              |                 |                       |                            | GLOBE AND GUARD             | REFRACTOR AND GUARD |
| MH <sup>③</sup>              | 50 (M110)       | 3/4"                  | 120/208/240/277            | MBH500-GGA2                 | MBH500-R5GA2        |
|                              | 70 (M98)        | 3/4"                  | 120/208/240/277            | MBH700-GGA2                 | MBH700-R5GA2        |
|                              | 100 (M90)       | 3/4"                  | 120/208/240/277            | MBH100-GGA2                 | MBH100-R5GA2        |

Ceiling



| CEILING 50-100W METAL HALIDE |                 |                       |                            |                             |                     |
|------------------------------|-----------------|-----------------------|----------------------------|-----------------------------|---------------------|
| LAMP TYPE                    | LAMP WATTS/ANSI | HUB SIZE <sup>②</sup> | VOLTAGE 60 HZ <sup>①</sup> | CATALOG NUMBER <sup>②</sup> |                     |
|                              |                 |                       |                            | GLOBE AND GUARD             | REFRACTOR AND GUARD |
| MH <sup>③</sup>              | 50 (M110)       | 3/4"                  | 120/208/240/277            | MBH500-GGX2                 | MBH500-R5GX2        |
|                              | 70 (M98)        | 3/4"                  | 120/208/240/277            | MBH700-GGX2                 | MBH700-R5GX2        |
|                              | 100 (M90)       | 3/4"                  | 120/208/240/277            | MBH100-GGX2                 | MBH100-R5GX2        |

Wall



| WALL 50-100W METAL HALIDE |                 |                       |                            |                             |                     |
|---------------------------|-----------------|-----------------------|----------------------------|-----------------------------|---------------------|
| LAMP TYPE                 | LAMP WATTS/ANSI | HUB SIZE <sup>②</sup> | VOLTAGE 60 HZ <sup>①</sup> | CATALOG NUMBER <sup>②</sup> |                     |
|                           |                 |                       |                            | GLOBE AND GUARD             | REFRACTOR AND GUARD |
| MH <sup>③</sup>           | 50 (M110)       | 3/4"                  | 120/208/240/277            | MBH500-GGB2                 | MBH500-R5GB2        |
|                           | 70 (M98)        | 3/4"                  | 120/208/240/277            | MBH700-GGB2                 | MBH700-R5GB2        |
|                           | 100 (M90)       | 3/4"                  | 120/208/240/277            | MBH100-GGB2                 | MBH100-R5GB2        |

Stanchion



| STANCHION 50-100W METAL HALIDE |                 |                       |                            |                             |                     |
|--------------------------------|-----------------|-----------------------|----------------------------|-----------------------------|---------------------|
| LAMP TYPE                      | LAMP WATTS/ANSI | HUB SIZE <sup>②</sup> | VOLTAGE 60 HZ <sup>①</sup> | CATALOG NUMBER <sup>②</sup> |                     |
|                                |                 |                       |                            | GLOBE AND GUARD             | REFRACTOR AND GUARD |
| MH <sup>③</sup>                | 50 (M110)       | 1-1/4"                | 120/208/240/277            | MBH500-GGD4                 | MBH500-R5GD4        |
|                                | 70 (M98)        | 1-1/4"                | 120/208/240/277            | MBH700-GGD4                 | MBH700-R5GD4        |
|                                | 100 (M90)       | 1-1/4"                | 120/208/240/277            | MBH100-GGD4                 | MBH100-R5GD4        |

① Metal Halide MB fixtures use quad-volt ballasts.

② Catalog numbers shown with 3/4" conduit openings (1-1/4" on stanchion mount) and include globe and guard or IES type V 8" glass refractor and guard. See catalog logic for other possible configurations.

③ 50, 70, 100 MH Ballasts include a separate ignitor and are PULSE circuits.

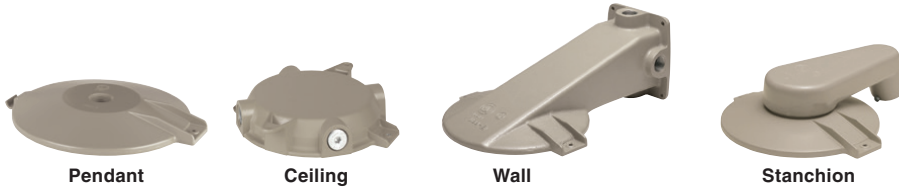
\* See Hazardous Location Application Data on page L72 for limitations.

# LIGHTING

MB SERIES



## COMPONENT PARTS/BALLAST DATA



| MB MOUNTING BRACKETS |         |       |           |          |
|----------------------|---------|-------|-----------|----------|
| CATALOG NUMBER       |         |       |           | HUB SIZE |
| PENDANT              | CEILING | WALL  | STANCHION |          |
| MBA-2                | MBX-2   | MBB-2 | —         | 3/4      |
| MBA-3                | MBX-3   | MBB-3 | —         | 1        |
| —                    | MBX-8*  | —     | —         | M20      |
| —                    | —       | —     | MBD-4     | 1-1/4    |
| —                    | —       | —     | MBD-5     | 1-1/2    |

\* MBX-8 furnished with 3 non-metallic plugs



EBRS



EMRS



ENY-2Set

| MB ACCESSORIES |  |
|----------------|--|
| CATALOG NUMBER | DESCRIPTION  |
| EMRS           | MB medium base replacement socket (E26)                              |
| EBRS           | MB Bi-Pin base replacement socket                                    |
| MPL13          | Replacement lamp for MBF and EBF series                              |
| ENY-2SET       | 3/4 ENY seal with set screw for sealed (Ex nR) pendant installations |
| ENY-3SET       | 1 ENY seal with set screw for sealed (Ex nR) pendant installations   |

| MB BALLAST TANK |              |                 |                |
|-----------------|--------------|-----------------|----------------|
| LAMP TYPE       | LAMP WATTAGE | VOLTAGE 60 HZ   | CATALOG NUMBER |
| FL              | 13           | 120             | MBF131         |
|                 | 26           | 120             | MBF261         |
|                 | 39           | 120             | MBF391         |
| HPS             | 50           | 120             | MBL501         |
|                 | 70           | 120             | MBL701         |
|                 | 100          | 120             | MBL101         |
|                 | 150          | 120             | MBL151         |
| MH              | 50           | 120/208/240/277 | MBH500         |
|                 | 70           | 120/208/240/277 | MBH700         |
|                 | 100          | 120/208/240/277 | MBH100         |

| MB BALLAST DATA |           |                    |                 |                 |                   |                 |                     |   |                           |
|-----------------|-----------|--------------------|-----------------|-----------------|-------------------|-----------------|---------------------|---|---------------------------|
| LAMP            | LAMP TYPE |                    | STARTING AMPS   | OPERATING AMPS  | OPEN CIRCUIT AMPS | INPUT WATTS MAX | BALLAST CIRCUIT     | REGULATIONS   | MINIMUM START TEMPERATURE |
|                 | WATTS     | VOLTS - VAC        |                 |                 |                   |                 |                     |   |                           |
| FL <sup>①</sup> | 13        | 120/277            | .39/.35         | .30/.3          | —                 | 16              | NPF                 | —   | 0° -18°C                  |
| HPS             | 50        | 120                | 0.75            | 0.55            | 0.9               | 60              | HX-HPF <sup>②</sup> | ±5% Line voltage <sup>③</sup>                                 | -40°F -40°C               |
|                 | 70        | 120                | 0.85            | 0.75            | 1.3               | 82              | HX-HPF <sup>②</sup> | ±5% Line voltage <sup>③</sup>                                 | -40°F -40°C               |
|                 | 100       | 120                | 1.50            | 1.05            | 1.8               | 115             | HX-HPF <sup>②</sup> | ±5% Line voltage <sup>③</sup>                                 | -40°F -40°C               |
|                 | 150       | 120                | 2.20            | 1.50            | 2.35              | 170             | HX-HPF <sup>②</sup> | ±5% Line voltage <sup>③</sup>                                 | -40°F -40°C               |
| MH              | 50        | 120/208<br>240/277 | .87/.51/.47/.39 | .6/.35/.3/.25   | 1.6/.67/.57/.5    | 67              | HX-HPF <sup>②</sup> | ±5% Line voltage <sup>③</sup><br>±12% Lamp watts <sup>③</sup> | -20°F -30°C               |
|                 | 70        | 120/208<br>240/277 | .8/.5/.43/.39   | .85/.5/.43/.37  | 1.7/1.04/.87/.78  | 95              | HX-HPF <sup>②</sup> | ±5% Line voltage <sup>③</sup><br>±12% Lamp watts <sup>③</sup> | -20°F -30°C               |
|                 | 100       | 120/208<br>240/277 | 1.2/.8/.65/.6   | 1.15/.66/.58/.5 | 2.3/1.4/1.15/1.0  | 129             | HX-HPF <sup>②</sup> | ±5% Line voltage <sup>③</sup><br>±12% Lamp watts <sup>③</sup> | -20°F -30°C               |

① Per lamp, max available amps @ 120VAC is 0.3A; max @ 277VAC is 0.2A

② Ballasts are High Power Factor 90%+.

③ Lamp watts within ANSI Trapezoid limitations.





## ACCESSORIES/DIMENSIONS

Globe



MBG

Refractor



VZRG1550

Guards



MBAG



VMRWG8

Reflectors



VMPSD17

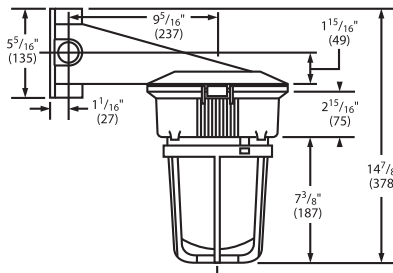
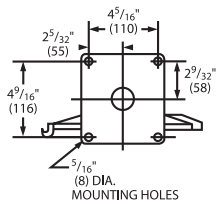
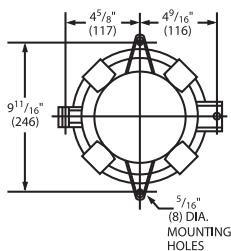
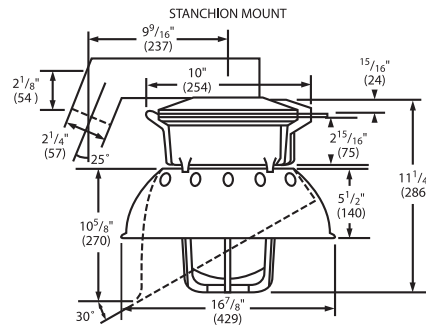
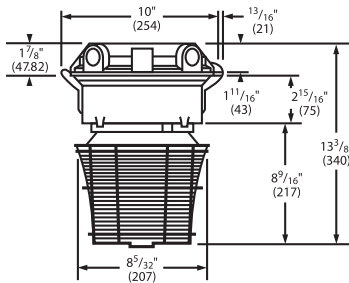


VMPIA17

### ORDERING INFORMATION

| MB ACCESSORIES |   |
|----------------|---|
| CATALOG NUMBER | DESCRIPTION   |
| MBG            | Heat and impact resistant globe                           |
| VZRG1550       | (I.E.S. Type V) closed bottom 8 glass refractor           |
| MBAG           | Globe guard - Epoxy/polyester painted aluminum            |
| VMRWG8         | Refractor guard - plated steel                            |
| VMPSD17        | Standard dome reflector (fiberglass reinforced polyester) |
| VMPIA17        | Angle reflector (fiberglass reinforced polyester)         |

### Dimensions



# LIGHTING

MB SERIES



## APPLICATION DATA

| MBF HAZARDOUS LOCATION DATA |                 |   |                    |   |          |  |  |                                   |
|-----------------------------|-----------------|---|--------------------|---|----------|--|--|-----------------------------------|
|                             |                 | CLASS I, DIVISION 2<br>GROUPS A, B, C, D <sup>①</sup> LAMP<br>TEMP, W/GLOBE,<br>GLOBE & REFLECTOR <sup>②</sup><br>OR 8" GLASS REFRACTOR |                    | CLASS II, DIVISION 1 & 2 <sup>①</sup><br>MAXIMUM SURFACE<br>TEMPERATURE W/GLOBE,<br>GUARD <sup>③</sup> & REFLECTOR <sup>②</sup><br>OR 8" GLASS REFRACTOR <sup>④</sup> |          | CLASS III, DIV. 1 & 2 <sup>①</sup><br>W/GLOBE, W/GUARD <sup>③</sup> &<br>REFLECTOR <sup>②</sup><br>OR 8" GLASS REFRACTOR |  | SUPPLY WIRE<br>SUITABLE<br>FOR °C |
| LAMP<br>TYPE                | LAMPS/<br>WATTS | RATED<br>AMBIENT °C   | UL/CSA<br>TEMP I.D | UL/CSA<br>TEMP I.D.   | GROUP    | UL/CSA   |  |                                   |
| PL                          | 13              | 40  | (T3B) 165°C        | (T4) 135°C  | E, F & G | YES  |  | 90                                |
|                             | 26 (2x13)       | 40  | (T3B) 165°C        | (T4) 135°C  | E, F & G | YES  |  | 90                                |
|                             | 39 (3x13)       | 25  | (T3A) 180°C        | (T4) 135°C  | E, F & G | YES  |  | 90                                |

① Verify temperatures for suitability for intended use.

② Includes both standard dome and angle reflectors.

③ Guard required for Class II, Division 1 and Class III, Division 1 applications.

④ Note: 8 inch glass refractor not CSA certified for Class II, Division 1 and Class III, Divisions 1 installations.

| MB HAZARDOUS LOCATION DATA |         |                        |  |                                |                   |   |                                |                   |                                    |                                |                   |                                      |
|----------------------------|---------|------------------------|--|--------------------------------|-------------------|---|--------------------------------|-------------------|------------------------------------|--------------------------------|-------------------|--------------------------------------|
| LAMP                       |         | RATED<br>AMBIENT<br>°C | CLASS I, DIV. 2, GROUPS A, B, C, D <sup>①</sup><br>LAMP TEMPERATURES |                                |                   | CLASS II, DIV. 1 & 2, GROUPS E, F, G<br><sup>③</sup> <sup>⑤</sup><br>MAXIMUM SURFACE TEMPERATURES |                                |                   | CLASS III, DIV. 1 & 2 <sup>③</sup> |                                |                   | SUPPLY<br>WIRE<br>SUITABLE<br>FOR °C |
| TYPE                       | WATTAGE |                        | WITHOUT <sup>④</sup><br>REFLECTOR                                    | WITH <sup>②</sup><br>REFLECTOR | WITH<br>REFLECTOR | WITHOUT <sup>④</sup><br>REFLECTOR   | WITH <sup>②</sup><br>REFLECTOR | WITH<br>REFRACTOR | WITHOUT <sup>④</sup><br>REFLECTOR  | WITH <sup>②</sup><br>REFLECTOR | WITH<br>REFRACTOR |                                      |
| HPS                        | 50      | 40                     | 215°C(T2D)   | 215°C(T2D)                     | 215°C(T2D)        | 120°C(T4A)  | 135°C(T4)                      | 120°C(T4A)        | YES                                | YES                            | YES               | 75                                   |
|                            | 50      | 55                     | 230°C(T2C)   | 230°C(T2C)                     | 230°C(T2C)        | 135°C(T4)   | 160°C(T3C)                     | 135°C(T4)         | YES                                | YES                            | YES               | 90                                   |
|                            | 50      | 65                     | 230°C(T2C)   | 230°C(T2C)                     | 230°C(T2C)        | 160°C(T3C)  | 160°C(T3C)                     | 160°C(T3C)        | YES                                | YES                            | YES               | 90                                   |
|                            | 70      | 40                     | 260°C(T2B)   | 260°C(T2B)                     | 230°C(T2C)        | 120°C(T4A)  | 135°C(T4)                      | 120°C(T4A)        | YES                                | YES                            | YES               | 75                                   |
|                            | 100     | 40                     | 280°C(T2A)   | 280°C(T2A)                     | 280°C(T2A)        | 160°C(T3C)  | 160°C(T3C)                     | 160°C(T3C)        | YES                                | YES                            | YES               | 90                                   |
|                            | 150     | 40                     | 325°C(T1)  | 325°C(T1)                      | 325°C(T1)         | —   | —                              | 160°C(T3C)        | NO                                 | NO                             | YES               | 110                                  |
| MH                         | 150     | 40                     | 325°C(T1)  | 325°C(T1)                      | 325°C(T1)         | 180°C(T3A)  | 200°C(T3)                      | —                 | NO                                 | NO                             | NO                | 110                                  |
|                            | 50      | 40                     | 230°C(T2C)   | 230°C(T2C)                     | 230°C(T2C)        | 160°C(T3C)  | 160°C(T3C)                     | 160°C(T3C)        | YES                                | YES                            | YES               | 90                                   |
|                            | 70      | 40                     | 230°C(T2C)   | 230°C(T2C)                     | 230°C(T2C)        | 160°C(T3C)  | 160°C(T3C)                     | 160°C(T3C)        | YES                                | YES                            | YES               | 90                                   |
|                            | 100     | 40                     | 280°C(T2A)   | 280°C(T2A)                     | 280°C(T2A)        | 160°C(T3C)  | 160°C(T3C)                     | 160°C(T3C)        | YES                                | YES                            | YES               | 85                                   |

① Verify temperatures for suitability for intended use.

② Includes both standard dome and angle reflectors.

③ Guard required for Class II, Division 1 and Class III applications.

④ Based on luminaire with globe and guard only.

⑤ 150 watt HPS—Groups E, F only with or without reflector and Groups E, F and G with refractor.