

LIGHTING

LZ2S SERIES



316 STAINLESS FLUORESCENT FIXTURES



Class I, Div. 2, Groups A,B,C,D
Class I, Zone 2, Groups IIC, IIB, IIA
Class II, Div. 1 & 2, Group E,F,G
AEx nAII, Ex nAII
Wet Locations
NEMA 4X
IP66

LINEARLITE® *

* marca registrada MEXICO

Certified - File LR11713

ABS Type Approval

Applications

LINEARLITE® rugged 316 stainless fluorescent fixtures are suitable for wet, harsh, corrosive and hazardous locations. The LZ2S Series can be used in Class I, Division 2 and Zone 2 hazardous vapors and in Class II combustible dust areas typically found in refineries, chemical plants, waste water & sewage treatment facilities, as well as in tunnels, food processing and coastal areas.

ABS (American Bureau of Shipping) type approval for use on decks, vessels, platforms, barges, ships and boats. Also suitable for docks and marinas.

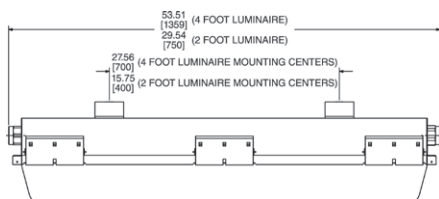
Features

- NEMA 4X & IP66 rated stainless enclosure with Lexan® impact resistant polycarbonate lens.
- Two 3/4" NPT stainless hubs - one at each end (includes aluminum 3/4" close-up plug and two 3/4" x 1/2" reducers for maximum user flexibility).
- Two 1/4" - 20 stainless bushings furnished in top of fixture for threaded rod.

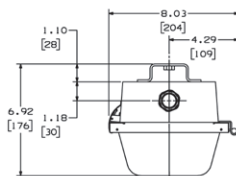
Lexan® is a registered trademark of General Electric

Additional Data

- L208 - Emergency models
- L165 - Ballast data
- L166 - Mounting accessories/ Replacement parts



See LZ2N Logic for Options



LZ2S STAINLESS			
NUMBER OF LAMPS/WATTS	VOLTAGE AC 60 HZ	DESCRIPTION	LZ2S
BIAIXIAL LAMP TYPE FIXTURES			
1-40W	120-277V	2' 1-Lamp Biaxial Electronic 50/60 Hz, 0°F Start 4-Pin	LZ2S40130
1-55W	120-277V	2' 1-Lamp Biaxial Electronic 50/60 Hz, 0°F Start 4-Pin	LZ2S55130
2-40W	120-277V	2' 2-Lamp Biaxial Electronic 50/60 Hz, 0°F Start 4-Pin	LZ2S40230
4-40W	120-277V	4' 4-Lamp Biaxial Electronic 50/60 Hz, 0°F Start 4-Pin	LZ2S40430
DOUBLE - ENDED LAMP TYPE FIXTURES			
2-17W	120-277V	2' 2-Lamp T-8 Electronic 50/60 Hz, 0°F Start Medium Bi-Pin	LZ2S17230
3-17W	120-277V	2' 3-Lamp T-8 Electronic 50/60 Hz, 0°F Start Medium Bi-Pin	LZ2S17330
2-28W	120-277V 50-60 Hz	4' 2-Lamp T-5 Electronic 0°F Start Miniature Bi-Pin	LZ2S28230
3-28W	120-277V 50-60 Hz	4' 3-Lamp T-5 Electronic 0°F Start Miniature Bi-Pin	LZ2S28330
2-32W k	120-277V 347V	4' 2-Lamp T-8 Electronic 50/60 Hz 0°F Start Medium Bi-Pin	LZ2S32230 ② LZ2S32215
3-32W	120-277V 347V	4' 3-Lamp T-8 Electronic 50/60 Hz 0°F Start Medium Bi-Pin	LZ2S32330 LZ2S32315
2-40W	120V 277V 230V 50 Hz ④	4' 2-Lamp T-12 Electronic Medium Bi-Pin Start 50°F 40W/60°F 34W	LZ2S40201 LZ2S40204 LZ2S40208
2-44W	120V 277V	4' 2-Lamp T-8 Electronic -20°F Start High Output Recessed Double Contact	LZ2S44230
2-54W 3-54W	120-277V	4' 2-Lamp T5 Electronic 50/60 Hz, -20°F Start Miniature Bi-Pin	LZ2S54230 LZ2S54330
2-60W	120-277V	4' 2-Lamp T-12 Electronic -20°F Start High Output Recessed Double Contact	LZ2S60230

① 50 Hz ballast is magnetic.

② Add suffix 55C for 2X 32W 120V-277V # L32S32230-55C.

LZ2S, LZ2SE HAZARDOUS LOCATION APPLICATION DATA										
NUMBER OF LAMPS/WATTS	RATED AMBIENT °C	SUITABLE FOR °C SUPPLY WIRE	CLASS I, DIV. 2 MAX. SURFACE TEMP.			CLASS II, DIV. 1 & 2 MAX. SURFACE TEMP.			CLASS III DIV. 1 & 2 SUITABILITY	
			TEMP.	T-CODE	GROUPS	TEMP.	T-CODE	GROUPS		
1 X 40W BIAIXIAL	40°	75	160°C	T3C	A, B, C, D	100°C	T5	E, F, G	Yes	
1 X 55W BIAIXIAL	40°	60	160°C	T3C	A, B, C, D	100°C	T5	E, F, G	Yes	
2 X 40W BIAIXIAL	40°	75	160°C	T3C	A, B, C, D	100°C	T5	E, F, G	Yes	
4 X 40W BIAIXIAL	40°	75	160°C	T3C	A, B, C, D	100°C	T5	E, F, G	Yes	
2 X 17W	40°	60	85°C	T5	A, B, C, D	100°C	T5	E, F, G	Yes	
3 X 17W	40°	60	85°C	T5	A, B, C, D	100°C	T5	E, F, G	Yes	
2 X 28W	40°	60	120°C	T4A	A, B, C, D	100°C	T5	E, F, G	Yes	
3 X 28W	40°	60	120°C	T4A	A, B, C, D	100°C	T5	E, F, G	Yes	
2 X 32W	40°	60	85°C	T6	A, B, C, D	100°C	T5	E, F, G	Yes	
2 X 32W	55° I	90	100°C	T5	A, B, C, D	N/A	N/A	N/A	N/A	
3 X 32W	40°	60	85°C	T6	A, B, C, D	100°C	T5	E, F, G	Yes	
2 X 40W	40°	60	120°C	T4A	A, B, C, D	100°C	T5	E, F, G	Yes	
2 X 44W	40°	60	120°C	T4A	A, B, C, D	100°C	T5	E, F, G	Yes	
2 X 54W	40°	75	160°C	T3C	A, B, C, D	100°C	T5	E, F, G	Yes	
3 X 54W	35° m	75	165°C	T3B	A, B, C, D	N/A	N/A	N/A	Yes	
2 X 60W	40°	75	135°C	T4	A, B, C, D	100°C	T5	E, F, G	Yes	

③ LZ2SE, 40°C max. battery models.

④ T-code measured at 40°C, ambient max. 30°C.



LZ2N SERIES

KILLARK

NON-METALLIC FLUORESCENT FIXTURES



4' Nominal Style



2' Nominal Style

Class I, Div. 2 Groups A,B,C,D
Class I, Zones 2, Groups IIC,IIB,IIA
Class II, Div. 1 & 2, Groups F,G
AEx nAll, Ex nAll
Wet Locations
NEMA 4X, IP66

Certified - File LR11713

NSF Food Handling
ABS Type Approval

LZ2N/LZ2S luminaires contain no exposed glass and carry Class II, "G" ratings required for many food processing areas.

FEATURES-SPECIFICATIONS

LINEARLITE® *

* marca registrada MEXICO

Applications

LINEARLITE® rugged Non-Metallic fluorescent fixtures are suitable for wet, harsh and hazardous locations. Use where enclosed and gasketed fixtures are required to withstand exposure to moisture, dust and corrosives. The LZ2N Series can also be used in Class I, Division 2 and Zone 2 hazardous vapors and in Class II areas where combustible dusts may exist. Typical areas used are in refineries, chemical plants, waste water & sewage treatment facilities, as well as in tunnels, food processing and coastal areas.

ABS (American Bureau of Shipping) type approval for use on decks, vessels, platforms, barges, ships and boats. Also suitable for docks and marinas.

NSF (National Sanitation Foundation) approved for "Food Handling" areas, typically requiring non-glass lighting.

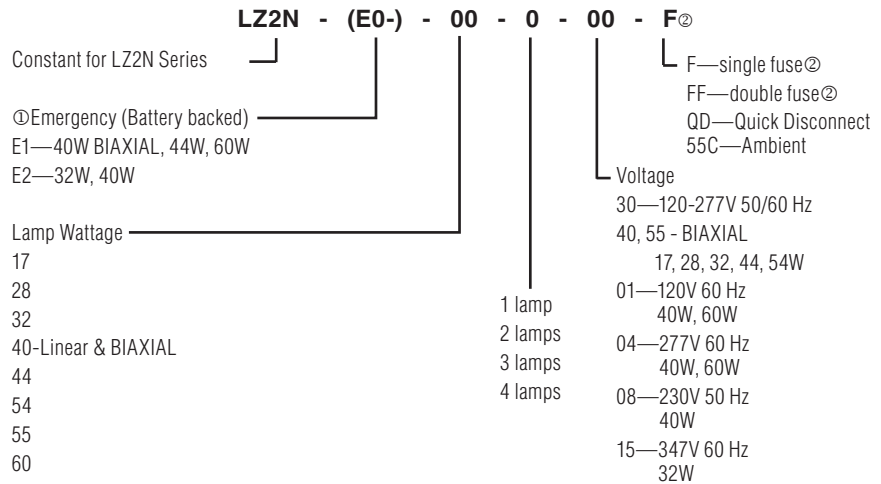
Features

- Lexan® Clear Lens, impact resistant polycarbonate
- Housing-one piece fiberglass reinforced polyester, NEMA 4X & IP66 rated.
- Two 3/4" NTP aluminum hubs - one at each end (includes one 3/4" close-up plug and two 3/4" x 1/2" reducers for maximum user flexibility)
- Two 1/4"-20 aluminum bushings furnished in top of fixture for threaded rod
- 2' and 4' luminaires
- Lamp types-
Linear 17, 28, 32, 40, 44, 54, 60W
Long compact 40, 55W (single ended)
- Electronic ballast standard
- World voltage (most models) 120 thru 277V, 50/60 Hz

Lexan® is a registered trademark of General Electric

Quick release diffuser clamp and hinged cover requires no special tools.

Catalog Number Logic



- Ⓞ See page L206 for complete catalog grid listing.
- Ⓞ Fuses not for marine or Canadian use.
- Ⓞ 55°C ambient suitability 2 or 3 lamp 32W C1D2 120V-277V only.

LZ2N, LZ2NE HAZARDOUS LOCATION APPLICATION DATA											
NUMBER OF LAMPS/WATTS	RATED AMBIENT °C	SUITABLE FOR °C SUPPLY WIRE	CLASS I, DIV. 2 MAX. SURFACE TEMP.			CLASS II, DIV. 1 & 2 MAX. SURFACE TEMP.			CLASS III DIV. 1 & 2 SUITABILITY	NEMA 4X IP66	
			TEMP.	T-CODE	GROUPS	TEMP.	T-CODE	GROUPS			
2 X 17W	40°	60	85°C	T5	A, B, C, D	100°C	T5	F, G	Yes	Yes	
3 X 17W	40°	60	85°C	T5	A, B, C, D	100°C	T5	F, G	Yes	Yes	
1 X 40W BIAxIAL	40°	60	100°C	T5	A, B, C, D	100°C	T5	F, G	Yes	Yes	
1 X 55W BIAxIAL	40°	60	160°C	T3C	A, B, C, D	100°C	T5	F, G	Yes	Yes	
2 X 40W BIAxIAL	40°	60	100°C	T5	A, B, C, D	100°C	T5	F, G	Yes	Yes	
4 X 40WBIAxIAL	40°	60	120°C	T4A	A, B, C, D	100°C	T5	F, G	Yes	Yes	
2 X 28W	40°	60	120°C	T4A	A, B, C, D	100°C	T5	F, G	Yes	Yes	
3 X 28W	40°	60	120°C	T4A	A, B, C, D	100°C	T5	F, G	Yes	Yes	
2 X 32W	40°	75	85°C	T6	A, B, C, D	100°C	T5	F, G	Yes	Yes	
2 X 32W	55°Ⓞ	90	100°C	T5	A, B, C, D	N/A	N/A	N/A	Yes	Yes	
3 X 32W	40°	75	85°C	T6	A, B, C, D	100°C	T5	F, G	Yes	Yes	
3 X 32W	55°Ⓞ	90	100°C	T5	A, B, C, D	N/A	N/A	N/A	Yes	Yes	
2 X 40W	40°	60	120°C	T4A	A, B, C, D	100°C	T5	F, G	Yes	Yes	
2 X 44W	40°	60	100°C	T5	A, B, C, D	100°C	T5	F, G	Yes	Yes	
2 X 54W T5	40°	75	160°C	T3C	A, B, C, D	100°C	T5	F, G	Yes	Yes	
3 X 54W T5	40°	75	180°C	T3A	A, B, C, D	120°C	T4A	F, G	Yes	Yes	
2 X 60W	40°	75	135°C	T4	A, B, C, D	100°C	T5	F, G	Yes	Yes	

LIGHTING

LZ2N SERIES



NON-METALLIC FLUORESCENT FIXTURES

LZ2N NON-METALLIC			
NUMBER OF LAMPS/WATTS	VOLTAGE AC 60 HZ	DESCRIPTION	LZ2N
BIAXIAL LAMP TYPE FIXTURES			
1-40W	120-277V	2' 1-Lamp Biaxial Electronic 50/60 Hz 0°F Start 4-Pin	LZ2N40130
1-55W	120-277V	2' 1-Lamp Biaxial Electronic 50/60 Hz 0°F Start 4-Pin	LZ2N55130
2-40W	120-277V	2' 2-Lamp Biaxial Electronic 50/60 Hz 0°F Start 4-Pin	LZ2N40230
4-40W	120-277V	4' 4-Lamp Biaxial Electronic 50/60 Hz 0°F Start 4-Pin	LZ2N40430
DOUBLE-ENDED LAMP TYPE FIXTURES			
2-17W	120-277V	2' 2-Lamp T8 Electronic 50/60 Hz 0°F Start Medium Bi-Pin	LZ2N17230
3-17W	120-277V	2' 3-Lamp T8 Electronic 50/60 Hz 0°F Start Medium Bi-Pin	LZ2N17330
2-28W	120-277V	4' 2-Lamp T-5 Electronic 50/60 Hz 0°F Start Miniature Bi-Pin	LZ2N28230
3-28W	120-277V	4' 3-Lamp T-5 Electronic 50/60 Hz 0°F Start Miniature Bi-Pin	LZ2N28330
2-32W	120-277V 347V	4' 2-Lamp T-8 Electronic 50/60 Hz 0°F Start Medium Bi-Pin	LZ2N32230 ^④ LZ2N32215
3-32W	120-277V 347V	4' 3-Lamp T-8 Electronic 50/60 Hz 0°F Start Medium Bi-Pin	LZ2N32330 ^④ LZ2N32315
2-40W	120V 277V 230V 50 Hz ^②	4' 2-Lamp T-12 Electronic, Medium Bi-Pin Start 50°F 40W/60°F 34W	LZ2N40201 LZ2N40204 LZ2N40208
2-44W	120-277V	4' 2-Lamp T-8 Electronic -20°F Start High Output 50/60 Hz Recessed Double Contact	LZ2N44230
2-54W	120-277V	4' 2-Lamp T-5 Electronic 50/60 Hz -20°F Start Miniature Bi-Pin	LZ2N54230
3-54W	120-277V	4' 2-Lamp T-5 Electronic 50/60 Hz -20°F Start Miniature Bi-Pin	LZ2N54330
2-60W	120-277V	4' 2-Lamp T-12 Electronic -20°F Start High Output 50/60 Hz Recessed Double Contact	LZ2N60230

See page L208 for LZ2NE Non-metallic and LZ2SE 316 Stainless Emergency Models

LZ2N AND LZ2S BALLAST DATA ^①					
NUMBER OF LAMPS / WATTS	VOLTAGE	LINE CURRENT AMPS		INPUT WATTS	STARTING TEMPERATURE
1 X 40W BIAXIAL	120-277V	.35 (120V)	.15 (277V)	39	0°F (-18°C)
1 X 55W BIAXIAL	120-277V	.49 (120V)	.22 (277V)	58	0°F (-18°C)
2 X 40W BIAXIAL	120-277V	.60 (120V)	.28 (277V)	78	0°F (-18°C)
4 X 40W BIAXIAL	120-277V	1.32 (120V)	.56 (277V)	156	0°F (-18°C)
2 X 17W	120-277V	.32 (120V)	.14 (277V)	38	0°F (-18°C)
3 X 17W	120-277V	.39 (120V)	.17 (277V)	48	0°F (-18°C)
2 X 28W	120-277V	.55 (120V)	.23 (277V)	66	0°F (-18°C)
3 X 28W	120-277V	.83 (120V)	.35 (277V)	99	0°F (-18°C)
2 X 32W	120-277V	.54 (120V)	.24 (277V)	65	0°F (-18°C)
3 X 32W	120-277V	.71 (120V)	.31 (277V)	85	0°F (-18°C)
2 X 40W	120-277V	.62 (120V)	.24 (277V)	71	50°F (10°C) I
2 X 44W	120-277V	.84 (120V)	.36 (277V)	99	-20°F (-29°C)
2 X 54W	120-277V	1.00 (120V)	.43 (277V)	120	-20°F (-29°C)
3 X 54W	120-277V	1.52 (120V)	.66 (277V)	182	-20°F (-29°C)
2 X 60W	120-277V	1.13 (120V)	.48 (277V)	125	-20°F (-29°C)

^① Includes normal powered LZ2NE and LZ2SE models, lamps not included.

^② Magnetic ballast.

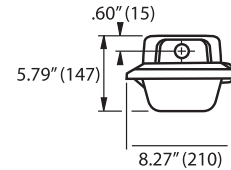
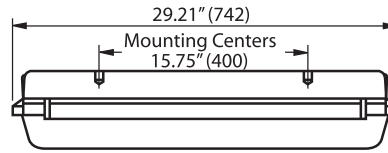
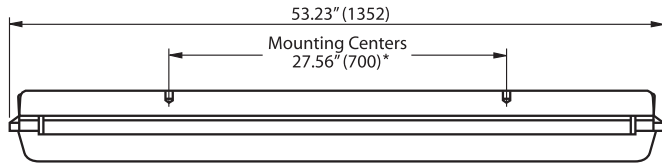
^③ 50°C 34T12; 60°F 40T12.

^④ See LOGIC for 55°C ambient suitability.



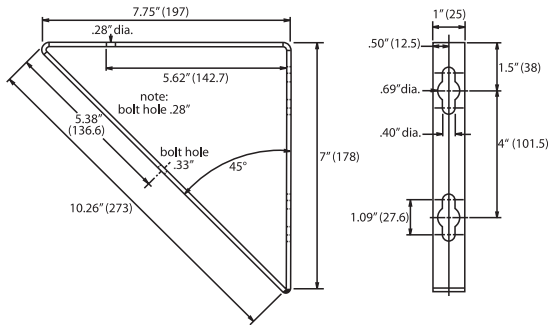
DIMENSIONS, ACCESSORIES

Dimensions LZ2N, LZ2NE Series

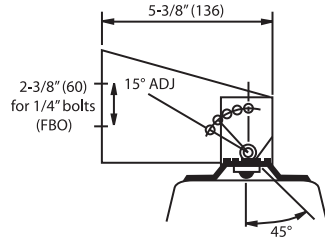


* Mounting Centers are 1/4-20" tapped for user all thread rod or below accessories.

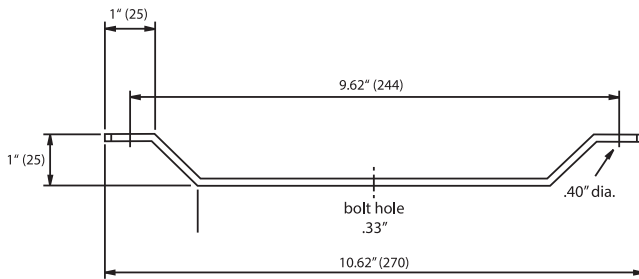
Mounting Accessories for all LZ2N, LZ2S Series



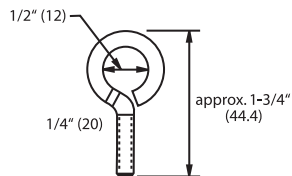
Wall Bracket Set²
Part Number LZWB
 Stainless Steel (natural finish)



Adjustable Wall Bracket Set²
Part Number LZAB
 Stainless Steel bracket with ceramic coated pivot bolt



Ceiling Bracket Set²
Part Number LZCB
 Stainless Steel (natural finish)



Eyebolt Set
Part Number LZEB
 Stainless Steel bolt with lockwasher & nut (natural finish)

Suspension Chains (2 required)
Part Number HFX-SC
 36" length plated steel chain with snap link ends. For use with LZEB

¹ Dimensions in () are millimeters.
² Product accessories have hardware for attachment to fixture; hardware to attach to wall/ceiling F.B.O.
 NOTE: Eyebolts are 316 Series, brackets are 300 Series Stainless Steel.

REPLACEMENT PARTS:	
LZ2N4LENS	4' Lens only LZ2N/LZ2S
LZ2N2LENS	2' Lens only LZ2N/LZ2S
LZ2N4BAR	4' Locking Bar only LZ2N
LZ2N2BAR	2' Locking Bar only LZ2N
LZ2S-LATCH	Latch and Spring