

E INCANDESCENT



EPG-2-200



EXG-2-200



EBG-2-200

Class I, Div. 1 & 2, Groups A,B,C,D
Class I, Zones 1 & 2, Groups IIC,IIB,IIA
Class II, Div. 1 & 2, Groups E,F,G



HG-200

Applications

For hazardous locations including where **Group A or Group B** gases are present, indoors or outdoors.

General, local or supplementary lighting in areas where Group A or Group B gases are manufactured, used or handled.

Features

- Cast of corrosion resistant aluminum alloy with electrostatically applied epoxy/polyester finish
- For 200 watt or 300 watt PS-30 medium base lamps. Fixture for lamp base-up mounting only
- Omit "G" in catalog number to omit guard

Groups **A,B** Rated

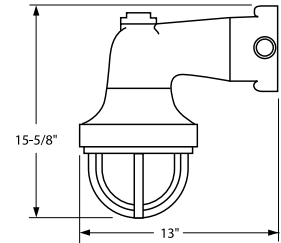
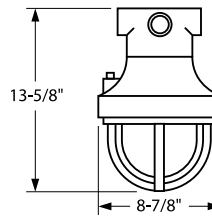
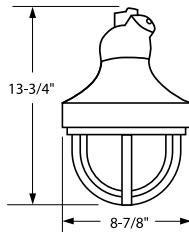
E INCANDESCENT FIXTURE	
CATALOG NUMBER	DESCRIPTION
EPG-2-200	Pendant 3/4" hub
EXG-2-200	Ceiling 3/4" hub
EBG-2-200	Bracket 3/4" hub

Note: For 200 watt or 300 watt PS-30 lamps. Fixture for lamp base-up mounting only.

E ACCESSORIES	
CATALOG NUMBER	DESCRIPTION
HG-200	Guard
EGSA-200	Globe w/ support assembly
HRME*	Replacement socket
ERSD30	Dome reflector
ERA30	Angle reflector

* Also fits discontinued H series medium base fixtures

E APPLICATION DATA							
LAMP WATTS	RATED AMBIENT °C	CLASS I, DIV. 1 & 2		CLASS II, DIV. 1 & 2		CLASS III SUITABILITY	SUPPLY WIRE °C
		T-CODE	GROUPS	T-CODE	GROUPS		
200	40	T4	A, B, C, D	T3C	E F G	YES	90
300	40	T3C	A, B, C, D	T3A	E, F	NO	150



H INCANDESCENT

500W MOGUL BASE



SERIES DISCONTINUED

AVAILABLE REPLACEMENT PARTS	
CATALOG NUMBER	DESCRIPTION
HP-2	3/4" Pendant Mount
HX-2	3/4" Ceiling Mount
HB-2	3/4" Wall Mount
HGSA-500F	Globe with Support Assembly
EZG1G	Guard
HRMO	Replacement Mogul Socket
HRD-400	Deep Reflector 21-1/8" dia.

Class I, Div. 1 & 2, Groups C,D
Class I, Zones 1 & 2, Groups IIB,IIA
Class II, Div. 1 & 2, Groups E,F,G

Listed - File E12976

Certified - File LR11713



HP-2



HX-2



HB-2



HGSA-500F



EZG1G



HRMO



HRD-400



KILLARK®