

BELDEN

SENDING ALL THE RIGHT SIGNALS®

**The Industry Leader in True 360°
Compression Connectors & Tooling Systems**



BROADCAST



AUDIO / VIDEO



SECURITY



COMMERCIAL



COMPRESSION TOOLS

Snap-N-Seal®

DB Double Bubble™

FC F-CONN.

CP CABLE PRO.

www.belden.com

REFERENCE GUIDE CONTENTS

Snap-N-Seal® ProSNS™ Compression Connectors

Universal Hybrid ProSNS Compression Connectors.....	4
RG11 Hybrid ProSNS Compression Connectors	5

F-Conn™ Compression Connectors

Plenum & Security (CCTV) Compression Connectors	6
RGB/Mini Coax Compression Connectors	7
Right Angle Compression Connectors.....	8
Splice Compression Connectors	9
Speaker Compression Connectors	10

Double Bubble™ Compression Connectors

Double Bubble Compression Connectors	12
Plenum & Security/ CCTV Compression Connectors.....	13
High Definition BNC Compression Connectors.....	14
DS3 & DS4 Compression Connectors	14
50 Ohm Compression Connectors	15
Intelligent Transportation System (ITS) Connectors.....	15

Belden Brilliance® HD BNC Compression Connectors

Belden Brilliance HD BNC Compression Connectors.....	16-17
--	-------

Basic Connector Series

Basic Compression Connector Series	19
--	----

Compression Connector Accessories

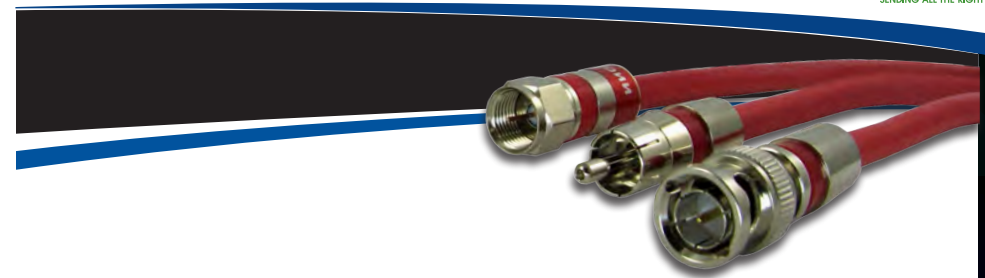
Color Bands and Color O-Rings.....	14
Strain Relief Boots.....	18

Cable Pro® Tools

Cable Strip Tools.....	21-22
SNSUTL Compression Tool	23
SNSUNI Compression Tool.....	23
CPLCRBC-B Double Bubble Compression Tool	24
CPLCRBC-ITS Compression Tool	24
CPLCCT-SLM Linear Compliant Compression Tool	25
CPLCCT-LS59/11 Compression Tool.....	25
CPLCCT-1-S Compression Tool	26
CPLCCT-SS59/11 RG59, 6, 7, 11 Compression Tool.....	26
CPLCCT-11BNC RG11 BNC Compression Tool.....	26
CPCAT5-PDT Punch Down Tool.....	27
CPRJ11-45 Strip/Crimp Tool	27
Compression Tool and Connector Kits	29-31

Installation Tools & Accessories

Modular Plugs.....	20
HDMI Cable.....	28
Cable Caddies	32
Cable Pro Torque Wrenches	33-35
Cable Pro Installation Tools.....	36-41
Splitters.....	42
CableReady® Cable Molding	43
Compression Connector Sizing Chart	44-47



Quality Coaxial Connectivity Solutions

Belden is a global leader in end-to-end signal transmission solutions for data, video and audio applications. Our coaxial connectivity solutions products feature superior quality, high-performance compression connectors, tools and accessories for a variety of coaxial installation applications.

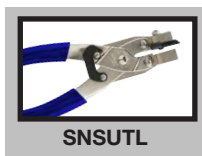
The patented design features of our Snap-N-Seal®, Double Bubble™ and F-Conn™ connector brands provide a secure, dependable connection from start to finish.

- TRUE 360° compression technology creating tools and connectors to work together as a complete, integrated system
- Connectors meet/exceed SCTE-IPC and Bellcore requirements
- Connectors provides superior pullout strength
- One-piece design option on connectors eliminate loose pins and sleeves
- Non-blind entry sleeve and pin-guide in one-piece connectors assist with the insertion of the cable into the connector
- Connectors feature internal compression rings to reduce/eliminate water migration

Connector Type	Cable Size									
	Mini Coax	RG59	RG59Q	RG59 Plenum CCTV	RG6	RG6Q	RG6 Plenum CCTV	RG7	RG11	RG11Q Plenum
Snap-N-Seal ProSNS		X	X	X	X	X	X		X	X
Double Bubble	X	X	X	X	X	X	X			X
F-Conn Basic Series		X	X		X	X		X	X	
F-Conn Nickel (FS)	X	X	X	X	X	X	X		X	X
F-Conn Gold (RG)	X	X	X		X	X				
F-Conn Splice (Female)	X	X	X		X	X				

Snap-N-Seal® ProSNS™ Universal Hybrid Compression Connectors

INDUSTRY USE: COMMERCIAL • PROFESSIONAL A/V • SECURITY



By combining the advanced, patented design features of F-Conn and the traditional, easy-to-use construction of Snap-N-Seal, the Belden ProSNS connectors provide the industry's easiest to install, high-performance compression connector as part of the Snap-N-Seal family brand.

- Non-blind entry (disposable guide sleeve for F's and sliding pin for RCA and BNC connectors)
- Plastic sleeve is up to 50% easier to compress than all-brass connectors
- Eliminates water migration through proven design features of multiple O-ring placement
- Superior Ni-Tin plating yields durable finish, preventing corrosion
- Clear product labeling and color-coded compression sleeves for easy product identification and re-ordering
- Improved connector design offers the flexibility to be installed with most universal compression tools

Part Number	Cable Type	Connector Description	Color Band	Tool Required
FSNS6U	RG6	Universal F Connector	Green	CPLCCT-SLM or SNSUTL
FSNS6BNCU	RG6	Universal BNC Connector	Green	CPLCCT-SLM or SNSUTL
FSNS6RCU	RG6	Universal RCA Connector	Green	CPLCCT-SLM or SNSUTL
FSNS59U	RG59	Universal F Connector	Red	CPLCCT-SLM or SNSUTL
FSNS59BNCU	RG59	Universal BNC Connector	Red	CPLCCT-SLM or SNSUTL
FSNS59RCU	RG59	Universal RCA Connector	Red	CPLCCT-SLM or SNSUTL

DOWNLOAD
PRODUCT BULLETIN

Snap-N-Seal® ProSNS™ Hybrid RG11 Compression Connectors

INDUSTRY USE: COMMERCIAL • PROFESSIONAL A/V • SECURITY



Efforts to improve the current design of Snap-N-Seal series 11 connectors provided Belden the opportunity to combine the patented design features of both Snap-N-Seal and F-Conn connector brands. The result is a quality, high-performance ProSNS Hybrid RG11 connector that requires low retention force to compress making installations quick and easy.

- Designed utilizing an air dielectric for better performance and excellent return loss
- The patented floating-pin insertion guide assists with the insertion of the cable into the connector
- F-type connectors feature a patented internal O-ring at the base of the nut to facilitate a free-spinning nut
- An additional O-ring placed at the base of the connector with a NiTin finish and UV resistant plastic provides a reliable, environmentally sealed product on the cable

Part Number	Connector Description	Color Band	Tool Required
716SNS1P11H	7/16" Hex Head Universal F	Black	CPLCCT-LS59/11 or SNSUNI
716SNS1P11HPLA	7/16" Hex Head F Connector, Plenum	Grey	CPLCCT-LS59/11 or SNSUNI
716SNS1P11HQ	7/16" Hex Head F Connector, Quad-Shield Only	Purple	CPLCCT-LS59/11 or SNSUNI
SNS1P11H	9/16" Hex Head Universal F	Black	CPLCCT-LS59/11 or SNSUNI
90SNS1P11H	9/16" Hex Head F Connector, Right Angle	Black	CPLCCT-LS59/11 or SNSUNI
FSNS11HBNC	Universal BNC Connector	Black	SNSUNI
FSNS11HBNCPLA	BNC Connector, Plenum	Grey	SNSUNI
FSNS11QHBNC	BNC Connector, Quad-Shield Only	Purple	SNSUNI

F-Conn™ Plenum and Security Compression Connectors

INDUSTRY USE: COMMERCIAL • SECURITY



- Custom engineered connectors provide a precise fit on a variety of plenum cables
- The Security connectors are designed for CCTV coaxial cable with copper braiding and a solid copper center conductor
- One-piece and non-blind entry design feature makes installation quick and easy
- Utilizes TRUE 360° all-brass compression technology



Part Number	Connector Description	Color Band	Tip Req'd	Tool Req'd
FS6PL	RG6 Plenum F-type Size 1	Green	LMTIP-S	CPLCCT-SLM
FS6PL2	RG6 Plenum F-type Size 2	Green	LMTIP-S	CPLCCT-SLM
FS6RCAPL	RG6 Plenum RCA Size 1	Green	LMTIP-S	CPLCCT-SLM
FS6RCAPL2	RG6 Plenum RCA Size 2	Green	LMTIP-S	CPLCCT-SLM
FS6BNCPL	RG6 Plenum BNC Size 1	Green	NONE	CPLCCT-SLM
FS6BNCPL2	RG6 Plenum BNC Size 2	Green	NONE	CPLCCT-SLM
FS59RCASL	RG59 Security (CCTV) RCA	Red	LMTIP-S	CPLCCT-SLM
FS59BNC SL	RG59 Security (CCTV) BNC	Red	NONE	CPLCCT-SLM
FS59PL	RG59 Plenum F-type Size 1	Red	LMTIP-S	CPLCCT-SLM
FS59PL2	RG59 Plenum F-type Size 2	Red	LMTIP-S	CPLCCT-SLM
FS59PL4	RG59 Plenum F-type Size 4	Red	LMTIP-S	CPLCCT-SLM
FS59RCAPL	RG59 Plenum RCA Size 1	Red	LMTIP-S	CPLCCT-SLM
FS59RCAPL2	RG59 Plenum RCA Size 2	Red	LMTIP-S	CPLCCT-SLM
FS59RCAPL3	RG59 Plenum RCA Size 3	Red	LMTIP-S	CPLCCT-SLM
FS59BNCPL	RG59 Plenum BNC Size 1	Red	NONE	CPLCCT-SLM
FS59BNCPL2	RG59 Plenum BNC Size 2	Red	NONE	CPLCCT-SLM
FS59BNCPL3	RG59 Plenum BNC Size 3	Red	NONE	CPLCCT-SLM
FS59BNCPL4	RG59 Plenum BNC Size 4	Red	NONE	CPLCCT-SLM

F-Conn™ RGB/Mini Coaxial Compression Connectors

INDUSTRY USE: COMMERCIAL • PROFESSIONAL A/V • SECURITY



- Available in two sizes:
 - RG15 (22-24 AWG), purple
 - RG1 (25-26 AWG), orange
- Multi-piece connectors are for solid center wire or stranded cable
- One-piece RGB connectors are for solid center conductor wire only, allowing installers to save time while retaining quality
- Available in gold for one-piece or multi-piece configurations
- Superior return loss numbers on all our RGB/mini coax connectors



Part Number*	Connector Description	Color Band	Tip Req'd	Tool Req'd
FS15	F, 1 Piece Solid Center Cond., RGB 22-24 AWG	Purple	LMTIP-S	CPLCCT-SLM
FS15BNC	BNC, 1 Piece Solid Center Cond., RGB 22-24 AWG	Purple	NONE	CPLCCT-SLM
FS15RCA	RCA, 1 Piece Solid Center Cond., RGB 22-24 AWG	Purple	LMTIP-S	CPLCCT-SLM
FS1BNC	BNC, 1 Piece Solid Center Cond., RGB 24-26 AWG	Orange	NONE	CPLCCT-SLM
FS1RCA	RCA, 1 Piece Solid Center Cond., RGB 24-26 AWG	Orange	LMTIP-S	CPLCCT-SLM
FSBNC15RGB	BNC, Multi-Piece, RGB 22-24 AWG	Purple	NONE	CPLCCT-SLM
FSRCA15RGB	RCA, Multi-Piece, RGB 22-24 AWG	Purple	LMTIP-S	CPLCCT-SLM
FSBNC1RGB	BNC, Multi-Piece, RGB 24-26 AWG	Orange	NONE	CPLCCT-SLM
FSRCA1RGB	RCA, Multi-Piece, RGB 24-26 AWG	Orange	LMTIP-S	CPLCCT-SLM

*Gold (RG=gold) connectors are available for purchase in one-piece or multi-piece configurations. Use the LMTIP-G for F and RCA connector compression.

F-Conn™ Right Angle Compression Connectors

INDUSTRY USE: COMMERCIAL • PROFESSIONAL A/V • SECURITY



- Designed to allow for adequate cable bend radius when space is limited
- A great solution for flush mounts, TV rack mounts, plasma/LCD televisions, and dome security camera installations
- Features a positive stop design to help guide the cable into the connector and prevent it from being over-compressed



Part Number	Connector Description	Color Band	Tip Req'd	Tool Req'd
FSRCA15RA	RCA 15RGB, Right Angle, Multi-piece, 22-24 AWG	Purple	LMTIP-RA	CPLCCT-SLM
FSBNC15RA	BNC 15RGB, Right Angle, Multi-piece, 22-24 AWG	Purple	LMTIP-RA	CPLCCT-SLM
FSRCA1RA	RCA 1RGB, Right Angle, Multi-piece, 25-26 AWG	Orange	LMTIP-RA	CPLCCT-SLM
FSBNC1RA	BNC 1RGB, Right Angle, Multi-piece, 25-26 AWG	Orange	LMTIP-RA	CPLCCT-SLM
FS59URA	RG59 F-type Universal Right Angle	Red	LMTIP-RA	CPLCCT-SLM
FSRCA59URA	RG59 RCA Universal Right Angle	Red	LMTIP-RA	CPLCCT-SLM
FSBNC59URA	RG59 BNC Universal Right Angle	Red	LMTIP-RA	CPLCCT-SLM
FS6URA	RG6 F-type Universal Right Angle	Green	LMTIP-RA	CPLCCT-SLM
FSRCA6URA	RG6 RCA Universal Right Angle	Green	LMTIP-RA	CPLCCT-SLM
FSBNC6URA	RG6 BNC Universal Right Angle	Green	LMTIP-RA	CPLCCT-SLM

F-Conn™ Splice (Female) Compression Connectors



- F, RCA and BNC for RG59, RG6 and RGB/mini coax cables
- Splices are available in nickel (FS) or gold (RG)
- Splice connectors are designed to reduce signal loss and save installation time by directly connecting two wires eliminating the the need for a coupler or splice barrel



Part Number	Connector Description	Color Band	Tip Req'd	Tool Req'd
FS15RCASST	RCA 15RGB, Splice 22-24 AWG Connector	Purple	LMTIP-WP	CPLCCT-SLM
FS15BNCSSST	BNC 15RGB, Splice 22-24 AWG Connector	Purple	NONE	CPLCCT-SLM
FS1RCASST	RCA 1RGB, Splice 24-26 AWG Connector	Orange	LMTIP-WP	CPLCCT-SLM
FS1BNCSSST	BNC 1RGB, Splice 24-26 AWG Connector	Orange	NONE	CPLCCT-SLM
FS59US	RG59 F-type, Universal Splice Connector	Red	LMTIP-WP	CPLCCT-SLM
FS59RCAUS	RG59 RCA, Universal Splice Connector	Red	LMTIP-WP	CPLCCT-SLM
FS59BNCUS	RG59 BNC, Universal Splice Connector	Red	NONE	CPLCCT-SLM
FS6US	RG6 F-type, Universal Splice Connector	Green	LMTIP-WP	CPLCCT-SLM
FS6RCAUS	RG6 RCA, Universal Splice Connector	Green	LMTIP-WP	CPLCCT-SLM
FS6BNCUS	RG6 BNC, Universal Splice Connector	Green	NONE	CPLCCT-SLM

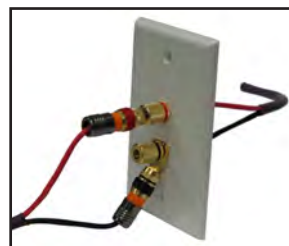
*Gold (RG=gold) connectors are available for purchase.

Speaker Compression Connector Series

INDUSTRY USE: COMMERCIAL • PROFESSIONAL A/V



- Patented design makes other audio connectors obsolete
- Speaker connectors fit 12, 14 and 16 AWG cable
- Pack includes two CEA color-coding compatible color rings per connector
- Screw-on tips (spade, banana, and pin) allow for quick connector format conversion
- Speaker binding post is designed to work in conjunction with the speaker connectors
- Based on the same universal tool platform series (CPLCCT-SLM)
- Connectors work with Belden wall plates and other corresponding modular speaker installations



Speaker Installation

Speaker Series

Part Number	Connector Description	Tip Req'd	Tool Req'd
RGSPU	4 Speaker Connectors*	LMTIP-G	CPLCCT-SLM
RGSPURA	4 Right Angle Speaker Connectors*	LMTIP-RA	CPLCCT-SLM

*Each 4 pack includes 12, 14, and 16 AWG Sleeves - (4)Red / (6)Black Colored Rings

RGSPBPOST	Female Speaker Binding Post 2 pack (1 red / 1 black)**	LMTIP-G	CPLCCT-SLM
-----------	---	---------	------------

**Each 2 pack includes 2 posts, (1) Red screw nut and (1) Black screw nut also (2) Red 12 AWG, (2) Green 14 AWG, and (2) Yellow 16 AWG Sleeves. (Requires module clip to fit Wall Plate System)

Screw-on Speaker Tips

Part Number	Connector Description
RGSPPL	SPADE TIP
RGSPB	BANANA TIP
RGSPPP	PIN TIP

FSCR-* Compression Connector Color Bands

INDUSTRY USE: COMMERCIAL • PROFESSIONAL A/V

- Choose from an assortment of patented color bands to make cables and wires easy to identify
- Simply slide the selected color band on over the compressed connector for easy identification



Part Number	Description
FSCR-*	Universal Color Band - *

*Available in B-Blue, BK-Black, BN-Brown, G-Green, GY-Grey, LG-Light Green, LP-Light Purple, O-Orange, P-Purple, PK-Pink, R-Red, T-Tan, W-White and Y-Yellow

HIPO* Color O-Rings

- Variety of color O-rings specifically designed for our splice connectors



Part Number	Description
HIPO*	Universal Color O-Ring - *

* = specify color choice: B-Blue, G-Green, K-Black, O-Orange, P-Purple, R-Red, W-White, Y-Yellow

Universal Insert Modules

- Interchangeable modular inserts feature a clip mount for ease of installation
- Modular inserts work with Belden Splice Connectors
- Available in a variety of colors to match Belden and other supplier wall plate components



Part Number	Description
HIPO*M	Universal Insert Module

* = specify color choice: AL-Almond, BK-Black, IV-Ivory, LA-Light Almond, WH-White

Double Bubble™ Compression Connectors

INDUSTRY USE: SECURITY • BROADCAST • COMMERCIAL
LAW ENFORCEMENT • CATV • SATELLITE



The Double Bubble compression tool incorporates the dies into the design of the tool to mold the metal of the Double Bubble connector around the cable. This reduces the cost of the connector and eliminates the need for a compression sleeve for compression.

- Double Bubble compression connectors are designed for structured wiring, security cameras and other exposed wiring installations
- F, RCA and BNC for RG59 and RG6 cables
- BNC and RCA connectors for RGB/mini coax cables



Part Number	Connector Description	Color Band	Tip Req'd	Tool Req'd
DB15RCA-R	RCA, RGB/ Mini Coax (22-24AWG)	-	LMTIP-S	CPLCRBC-BR
DB1BNC	BNC, RGB/ Mini Coax (25-26AWG)	-	NONE	CPLCRBC-BR
DB1RCA-R	RCA, RGB/ Mini Coax (25-26AWG)	-	LMTIP-S	CPLCRBC-BR
DB59U	F, RG59 Connector	Red	LMTIP-S	CPLCRBC-BR
DB59BNCU	BNC, RG59 Connector	-	NONE	CPLCRBC-BR
DB59RCAU	RCA, RG59 Connector	-	LMTIP-S	CPLCRBC-BR
DB6U	F, RG6 Connector	Green	LMTIP-S	CPLCRBC-BR
DB6BNCU	BNC, RG6 Connector	-	NONE	CPLCRBC-BR
DB6RCAU	RCA, RG6 Connector	-	LMTIP-S	CPLCRBC-BR

Double Bubble™ Plenum and Security (CCTV) Compression Connectors

INDUSTRY USE: SECURITY • BROADCAST
SATELLITE • CATV



- Custom designed plenum connectors make installations easier and provide a more accurate fit on the cable
- Security (SL) connectors are designed for RG59
- CCTV coaxial cables with copper braiding and solid copper center conductor in RCA and BNC



Part Number	Connector Description	Tip Req'd	Tool Req'd
DB6PL2	RG6 Plenum Size 2 F-type	LMTIP-S	CPLCRBC-BR
DB6RCAPL2	RG6 Plenum Size 2 RCA	LMTIP-S	CPLCRBC-BR
DB6BNCPL2	RG6 Plenum Size 2 BNC	NONE	CPLCRBC-BR
DB59PL2/4	RG59 Plenum Size 2/4 F-type	LMTIP-S	CPLCRBC-BR
DB59RCAPL2/3/4	RG59 Plenum Size 2/4 RCA	LMTIP-S	CPLCRBC-BR
DB59BNCPL2/4	RG59 Plenum Size 2/4 BNC	NONE	CPLCRBC-BR
DB59BNCPL3	RG59 Plenum Size 3 BNC	NONE	CPLCRBC-BR
DB59RCASL	RG59 Security RCA	LMTIP-S	CPLCRBC-BR
DB59BNC SL	RG59 Security BNC	NONE	CPLCRBC-BR

Double Bubble™ High Definition BNC Compression Connectors

INDUSTRY USE: SECURITY • BROADCAST



High Definition BNC connectors combine patented technologies with a proprietary manufacturing process to ensure the highest quality connections with superior return loss

Part Number	Connector Description	Color Band	Tool Req'd
DB6BNCHD	RG6	Green	CPLCRBC-BR
DB59BNCHD	RG59	Red	CPLCRBC-BR
DB15BNCHD	RGB/ Mini Coax (22-24AWG)	Purple	CPLCRBC-BR
DB1BNCHD	RGB/ Mini Coax (25-26AWG)	Orange	CPLCRBC-BR

Double Bubble™ DS3 & DS4 BNC Compression Connectors

INDUSTRY USE: SECURITY • BROADCAST • TELEPHONY



- The premier solution for high volume, digital signal quality
- Designed to fit Belden 735 and 734 cables



Part Number	Connector Description	Tip Req'd	Tool Req'd
DBDS3BNC	BNC for 735 Cable	NONE	CPLCRBC-BR
DBDS4BNC	BNC for 734 Cable	NONE	CPLCRBC-BR
DBDS4BNCPL	BNC for 734 Plenum Cable	NONE	CPLCRBC-BR

Double Bubble™ DB58UHF 50 Ohm Compression Connectors

INDUSTRY USE: SECURITY • MOBILE RADIOLAW • ENFORCEMENT



- Mini-UHF Plug
- Utilizes non-blind entry, one-piece design features
- DB58UHF includes RBCTIP-UHF adapter tip with purchase



Part Number	Connector Description	Tip Req'd	Tool Req'd
DB58UHF	50 Ohm Connector	RBCTIP-UHF	CPLCRBC-BR
DB58BNC	50 Ohm BNC Connector	NONE	CPLCRBC-BR

ITS BNC Compression Connectors Intelligent Transportation Systems

INDUSTRY USE: TOLL ROADS & CAMERAS



The Intelligent Transportation Systems (ITS) BNC connector provides a superior connection solution for a broad range of wire-line, communications-based information, control and electronic equipment installations.

- Designed for Belden 8281 and 8281B cable
- Connectors fit both stranded and solid-center cables
- FIT-SL2 tool spreads the cable jacket to make connector insertion easier and faster



Part Number	Connector Description	Tip Req'd	Tool Req'd
DB59BNC SL2-M	RG59 BNC Security (CCTV) Male Connector	NONE	CPLCRBC-ITS
DB59BNC SL2-F	RG59 BNC Security (CCTV) Female Splice Connector	LMTIP-WP	CPLCRBC-ITS

Belden Brilliance® High-Definition BNC Broadcast Compression Connectors

INDUSTRY USE: SECURITY • BROADCAST • PROFESSIONAL A/V



Belden Brilliance HD BNC connectors are designed specifically for the Brilliance Broadcast and Professional Audio/Video coaxial cables to maximize broadcast signal integrity, quality, performance and durability. Three connector types are available, each offering varying levels of electrical performance and installation speed.

Locking 1-Piece Design

- Screw-lock collar provides superior electrical signal performance by creating coaxial alignment between the cable and connector center pin, delivering exceptional return loss performance cable
- A non-blind entry ensures the center conductor is properly inserted into the center pin, simplifying the installation
- 1-Piece design eliminates pin, collar and connector as separate components to make the installation faster and more efficient
- Internal 360 compression rings provide excellent holding strength and eliminate ingress and egress from the back of the connector



Part Number	Connector Description	Color Band	Tool Req'd
1694ABHDLW*	RG6 Watertight HD BNC Connector	Green	CPLCRBC-BR
1694ABHDL	RG6 HD BNC Connector	Green	CPLCRBC-BR
1695ABHDL	RG6 Plenum Size 2 HD BNC Connector	Green	CPLCRBC-BR
1505ABHDL	RG59 HD BNC Connector	Red	CPLCRBC-BR
1506ABHDL	RG59 Plenum Size 2/4 HD BNC Connector	Red	CPLCRBC-BR
1855ABHDL	22-24AWG HD BNC Connector	Purple	CPLCRBC-BR
179DTBHDL	179 Digital Truck HD BNC Connector	Yellow	CPLCRBC-BR

*BNCTL, BNC Terminator with Lanyard sold separately.
BNC connectors do not require an adapter tip to compress.

1-Piece Design

Offers excellent return loss performance, but with a faster, simpler installation, and the benefit of a custom fit with Belden Brilliance cable. Same great 1-piece design features of non-blind entry, compression rings and improved insulator, providing easy and repeatable installation every time. The Belden 1-Piece compression technology is a fast and proven approach to a Belden end-to-end solution.



Part Number	Connector Description	Color Band	Tool Req'd
1794ABHD1	RG7 HD BNC	White	CPLCRBC-BR
1694ABHD1	RG6 HD BNC	Green	CPLCRBC-BR
1695ABHD1	RG6 Plenum Size 2 HD BNC	Green	CPLCRBC-BR
1505ABHD1	RG59 HD BNC	Red	CPLCRBC-BR
1506ABHD1	RG59 Plenum Size 2/4 HD BNC	Red	CPLCRBC-BR
1855ABHD1	22-24AWG HD BNC	Purple	CPLCRBC-BR
179DTBH1	179 Digital Truck HD BNC	Yellow	CPLCRBC-BR

BNC connectors do not require an adapter tip to compress.

3-Piece Design



Traditional pin, collar and connector approach, but designed specifically for Belden cable tolerances for better return loss performance and durability. Compatible with most existing crimp tools and die sets.

Part Number	Connector Description	Color Band	Tool Req'd
1694ABHD3	RG6 HD BNC	Green	BB3PHCT
1695ABHD3	RG6 Plenum Size 2 HD BNC	Green	BB3PHCT
1505ABHD3	RG59 HD BNC	Red	BB3PHCT
1506ABHD3	RG59 Plenum Size 2/4 HD BNC	Red	BB3PHCT
1855ABHD3	22-24AWG HD BNC	Purple	BB3PHCT
179DTBH3	179 Digital Truck HD BNC	Yellow	BB3PHCT

BNC connectors do not require an adapter tip to compress.

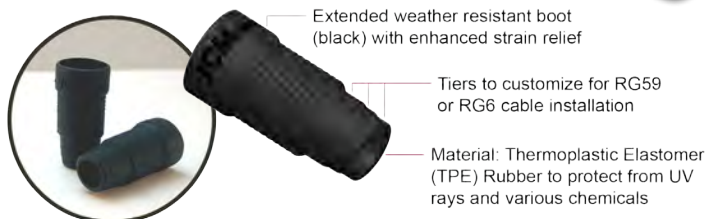
Compression Connector Accessories Strain Relief Boots

INDUSTRY USE: SECURITY • BROADCAST • A/V • COMMERCIAL

Belden's strain relief boots provide enhanced strain relief and connector protection for your installation. The boot is an optional cable termination sleeve designed and manufactured to protect the cable's bend radius so as not to damage the cable and connection caused by wire strain.

SLS-59/6 Strain Relief Boots for RG59 and RG6 Coaxial Cable

- Extended design includes three tiers that can be cut to customize for RG59 or RG6 cable diameters
- Extended weather resistant boot (black) with enhanced strain relief



SLS-RGB* Strain Relief Boots for RGB/Mini Coaxial Cable

- Made with a weather resistant material to provide superior protection at the base of the connector
- Available in four colors, and features an extended boot design to provide enhanced strain relief
- Custom fit for F-Conn's FS and DB series (F, RCA and BNC) RGB/mini coax compression connectors



*Indicate color when ordering:
Yellow, Red, White or Black

Basic Compression Connector Series

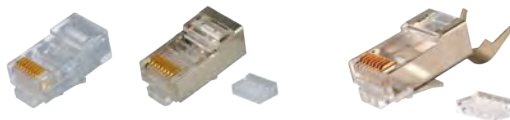
INDUSTRY USE: CATV



- The original universal design connector series for standard through quad-shield size cables
- Available in F and RCA connector types

Part Number	Connector Description	Tool Required
RG59NR	RG59 F-type Connector for Headend Cable	CPLCRBC-BR
RG59WR	RG59 F-type Connector w/ Internal Sealing Rings for 67% to Quad Shield, Indoor	CPLCRBC-BR
RG59WRO	RG59 F-type Connector w/ Internal Sealing Rings for 67% to Quad Shield, External O-Ring for Outdoor	CPLCRBC-BR
RG59-RCAWR	RG59 RCA Connector w/ Internal Sealing Rings	CPLCRBC-BR
RG6WR	RG6 F-type Connector w/ Internal Sealing Rings for 60% to Tri-Shield, Indoor	CPLCRBC-BR
RG6WRO	RG6 F-type Connector w/ Internal Sealing Rings for 60% to Tri-Shield, External O-Ring for Outdoor	CPLCRBC-BR
RG6-RCAWR	RG6 RCA Connector w/ Internal Sealing Rings	CPLCRBC-BR
RG6NR	RG6 F-type Connector, for Quad Shield, Indoor	CPLCRBC-BR
RG6NRO	RG6 F-type Connector, for Quad Shield, External O-Ring for Outdoor	CPLCRBC-BR
F11WR	RG11 F-type Connector for 60% to Quad Shield, Twist-On	No Tool Required
F81-RS	F81 Splice w/ Round Seizure	No Tool Required
F81-RS/NW	F81 Splice w/ Round Seizure and Nut/Washer	No Tool Required

Modular Plugs



Belden offers Modular Plugs as an accessible, easy-to-use solution to terminate twisted pair and multiconductor flat cable for Security, Audio/Visual and Broadcast applications where field installation is necessary.

Part Number	Description	Tool Required
HIPMP-RJ45CAT6	RJ45 Category 6 Non-Shielded Modular Plug w/50 Micron Gold Contacts	CPRJ11-45
HIPM-PRJ45CAT6SH	RJ45 Category 6 Shielded Modular Plug w/50 Micron Gold Contacts	CPRJ11-45
HIPM-PRJ45CAT6GC	RJ45 Category 6 Non-Shielded Modular Plug w/ Grounding Tabs	CPRJ11-45
HIPMP-RJ45	RJ45 Category 5e Non-Shielded Modular Plug w/50 Micron Gold Contacts	CPRJ11-45
HIPMP-RJ45SH	RJ45 Category 5e Shielded Modular Plug w/50 Micron Gold Contacts	CPRJ11-45

Modular Plug Accessories



Part Number	Description	Tool Required
SLS-RJ45-6.0	Strain Relief, Snagless Over Boot, 6 mm	No Tool Required
SLS-RJ45-7.0	Strain Relief, Snagless Over Boot, 7 mm	No Tool Required
SLS-RJ45CR-5.7	Strain Relief, CrimpableSnagless Over Boot, 5.7 mm	CPRJ11-45
SLS-RJ45-6.3	Strain Relief, CrimpableSnagless Over Boot, 6.3 mm	CPRJ11-45

Cable Pro® Cable Strip Tools

- Lightweight and compact for easy transportation and storage
- Integrated rollers ensure the strip tool rolls around the cable to create a clean, even cut
- NO screws, keys or other adjustment pieces to manage

PSA59/6 Cable Strip Tool



- Preps RG59, RG6 and RG58 cable
- Adjustable dial locates the perfect setting for cable preparation
- Patented cable stop creates a precise 1/4"-1/4" cable preparation
- Integrated side flaring tool for RG6 cable
- Includes an extra replacement blade cartridge

Part Number	Description
PSA59/6	Preps RG59, RG6 and RG58 cable
PSCA59/6	Replacement Cartridge for PSA59/6 tool

PS59/6/RGB Cable Strip Tool



- Preps RG59, RG6 and RGB/mini coax cable
- Patented cable stop creates a precise 1/4"-1/4" cable preparation
- Includes TWO extra blade cartridges!
 - (1) Cartridge (PSC-RGB/red) specifically for RGB/mini coax cables
 - (1) Cartridge for RG59 and RG6 cables

Part Number	Description
PS59/6/RGB	Preps RG59, RG6 and RGB/ mini coax cables
PSC59/6/RGB	Replacement cartridge for PS59/6/RGB tool
PSC-RGB	Replacement cartridge for PS59/6/RGB tool to prep RGB/ mini coax cables

PS11 Cable Strip Tool



- Preps RG11 cable
- Heavy-duty spring provides resistance against every day wear
- Patented cable stop creates a precise 1/4"-1/4" cable preparation
- Includes an extra replacement blade cartridge

Part Number	Description
PS11	Preps RG11 cables
PSC11	Replacement cartridge for PS11 tool to prep RG11 cable

Cable Pro® Compression Tools

Belden uses the finest materials and metals available on the market to manufacture superior quality custom installation compression tools and connectors providing exceptional solutions for professional installers.

SNSUTL Compression Tool

INDUSTRY USE: CATV • SATELLITE • COMMERCIAL A/V



- Standard compression tool for Snap-N-Seal connectors including F Male, RCA, BNC, Right Angle, Inline Splices, Ground Blocks as well as the ProSNS line to fit series 59 and 6 coaxial cables
- Plier-type tool with revited construction
- Support plate centers connectors, while plate fingers provide 300° support during compression
- 1-year warranty

SNSUNI Compression Tool

INDUSTRY USE: CATV • SATELLITE • COMMERCIAL A/V



- A universal plier-type tool with revited construction for Snap-N-Seal connectors including F Male, RCA, BNC, Right Angle, Splices as well as the ProSNS line to fit series 59, 6, 7 and 11 coaxial cables
- Easy to use - the black nylon slide is clearly indicated on the tool to assist with selecting the correct position for the cable type in use
- Black nylon slide includes T-slot to prevent the tool tilting
- Support plate centers connectors, while plate fingers provide 300° support during compression
- 1-year warranty

CPLCRBC-BR Double Bubble™ Compression Tool

INDUSTRY USE: SECURITY • BROADCAST • CATV • COMMERCIAL



- Compress the Double Bubble connectors to create a secure, permanent "double bubble" connection
- Self-adjusting plunger head provides a precise and constant compression each and every time
- Includes 1 LMTIP-S interchangeable adapter tip for compression of F and RCA type connectors
- 1-year warranty

Part Number	Description
CPLCRBC-BR	Double Bubble™ Compression Tool - Blue
LMTIP-S	Silver adapter tip for DB silver/nickel connectors
RBCTIP-UHF	Adapter tip for Double Bubble 50 Ohm connectors

CPLCRBC-ITS Specialty Compression Tool

INDUSTRY USE: TOLL ROAD • SECURITY



- Designed specifically for the Double Bubble ITS BNC male and female connector
- ITS BNC connectors fit Belden 8281 and 8281B cable
- Includes the LMTIP-WP adapter tip to compress DB59BNC SL2-F splice connectors
- 1-year warranty

CPLCCT-SLM Linear Compliant Compression Tool

INDUSTRY USE: PRO A/V • SECURITY • CATV • COMMERCIAL



- Manufactured of solid steel for maximum strength and durability
- Crafted so that it is lightweight and easy to use
- Self-adjusting plunger head provides a precise and constant compression each and every time
- Includes four interchangeable adapter tips to compress a full line of connectors
- Compress with F-Conn's FS and RG Series Connectors
- 1-year warranty

Part Number	Description
CPLCCT-SLM	Linear Complaint Compression Tool
LMTIP-S	Silver adapter tip for F-Conn's silver/nickel connectors
LMTIP-G	Gold adapter tip for F-Conn's gold connectors
LMTIP-WP	Wall Plate adapter tip for F-Conn's splice connectors
LMTIP-RA	Right Angle adapter tip for F-Conn's right angle connectors
LMTIP-HOLDER	Holder for adapter tips
LMTIP-KIT	Kit includes Holder + 5 tips - G, S, RA, WP, IEC

CPLCCT-LS59/11 Compression Tool

INDUSTRY USE: CATV



- Compress F connectors for F-Conn or Snap-N-Seal ProSNS series with RG6, RG59, RG7 or RG11 cable
- 1-year warranty

CPLCCT-1-S Compression Tool

INDUSTRY USE: CATV



- For F-Conn FS or Snap-N-Seal ProSNS series F and RCA compression connectors
- No adjustment for compression!
- Crafted so that it is lightweight and easy to use
- Self-adjusting plunger head provides a precise and constant compression each and every time
- 1-year warranty

CPLCCT-SS59/11 Compression Tool

INDUSTRY USE: CATV



- For F-Conn FS or Snap-N-Seal ProSNS series RG59 and RG6 F connectors or F-Conn RG11 connectors (FS11V, FS11PL and FS112RA)
- 1-year warranty

CPLCCT-11BNC Specialty Compression Tool

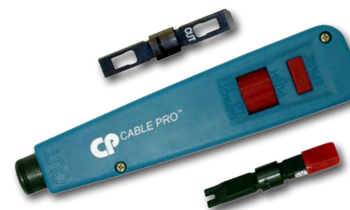
INDUSTRY USE: CATV



- Compresses the FS11BNC, RG11 BNC connector
- No adjustments required!
- Self-adjusting plunger head provides constant compression
- 1-year warranty

CPCAT5-PDT Punch Down Tool

INDUSTRY USE: TELEPHONE



- Punch Down tool is designed for the termination of telephone wire on 66 and 110 style of terminating blocks
- Includes a storage compartment to place spare bits
- Blades are made of hardened SNCM-21 element, are interchangeable and reversible
- Includes 66 and 110 termination bits and are easily interchangeable
- Adjustable high/low impact setting accommodates termination requirements

CPRJ11-45 Strip/Crimp Tool

INDUSTRY USE: TELEPHONE • DATA



- Termination of RJ11 and RJ45
- Short stop creates 1/4" cable prep
- Long stop creates 1/2" cable prep
- Cut, Strip and Crimp, without changing tools or die sets
- Easy to use without compromising the quality of the connection
- Comfortable grip handles

Belden HDMI Cables

Belden strives to provide our customers with the most innovative products. The home theater market is constantly evolving with new advancements in technology. Choosing the right HDMI cable is important when creating the ultimate home theater experience.



- Belden High-Speed HDMI Cables with Ethernet are HDMI version 1.4a
- High-Speed HDMI Cables are UL/ CUL CMG/ FT4 listed
- High-Speed HDMI Cables achieve speeds of 340 MHz or up to 10.2 Gbps for superior performance
- Supports standard and high speed applications to create bold, bright colors, crystal-clear picture and intense, high-resolution sound
- Supports 3D gaming and other 3D video applications
- Transmits digital content at extremely high resolution (4K)
- Physical properties include nickel plated contacts and flexible black PVC outer jacket
- Automatic format adjustment and backward compatibility for seamless integration with most electronic devices

High-Speed HDMI® Cables with Ethernet and 3D Capabilities**

Part Number	Description
BJH2E3	3Ft. High-Speed HDMI Cables with Ethernet and 3D Capabilities
BJH2E6	6Ft. High-Speed HDMI Cables with Ethernet and 3D Capabilities
BJH2E10	10Ft. High-Speed HDMI Cables with Ethernet and 3D Capabilities
BJH2E12	12Ft. High-Speed HDMI Cables with Ethernet and 3D Capabilities

Cable Pro® Tech Express Tool Kits

Belden continues to expand our product line to ensure professional installers have the tools they need to create a permanent, quality installation.

SLMPSAKIT Tech Express Tool Kit

- CPLCCT-SLM Compression Tool and adapter tips
- PSA59/6 Cable Strip Tool and extra blade cartridge
- These tools work together as a complete integrated system with F-Conn's FS and RG series as well as the Snap-N-Seal ProSNS series of compression connectors



DBPSAKIT Tech Express Tool Kit

- CPLCRBC-B Compression Tool and adapter tips
- PSA59/6 Cable Strip Tool and extra blade cartridge
- These tools work together as a complete integrated system with Belden's Double Bubble series of compression connectors



Compression Connector and Tool Kits

Belden is recognized worldwide for our innovative line of 360° compression connectors, tools and accessories that work together as a complete system.



STARTERKIT

The Belden Starter Kit contains a Cable Pro® CPLCCT-SLM compression tool, PS59/6/RGB cable strip tool, and a variety of F-Conn™ FS or ProSNS™ compression connectors to create a high-quality, custom Audio/Video installation.

STARTERKIT INCLUDES:

- CPLCCT-SLM Compression Tool
- PS59/6/RGB Cable Strip Tool
 - PSC59/6/RGB (Blue Spare Cartridge)
 - PSC-RGB (Red Spare Cartridge)
- Wall Plate Inserts, Color Bands and Strain Relief Boots
- (10) FS59U or FSNS59U
- (5) FS59BNCU or FSNS59BNCU
- (10) FS6U or FSNS6U
- (5) FS6BNCU or FSNS6BNCU
- (5) FS6RCAU or FSNS6RCAU
- (5) FS6URA
- (5) FSBNC6URA
- (5) FS6US
- (5) FS6RCAUS
- (5) FS1RCA
- (5) FS1BNC
- (5) FS15RCA
- (5) FS15BNC



DBSTARTERKIT

The Belden Double Bubble™ Starter Kit contains a Cable Pro CPLCRBC-BR compression tool, PSA59/6 cable strip tool, and a variety of Double Bubble compression connectors to create a secure connection for structured wiring, security and satellite installations.

DBSTARTERKIT INCLUDES:

- CPLCRBC-BR Compression Tool
- PSA59/6 Cable Strip Tool
- FIT-59 Flaring/ Insertion Tool
- SLS-59/6
- (25) DB59U
- (10) DB59BNCU
- (10) DB59RCAU
- (10) DB59BNC SL
- (25) DB6U
- (10) DB6BNCU

DBSSKIT

The Belden DBSSKIT Security Starter Kit contains a Cable Pro CPLCRBC-BR compression tool, PSA59/6 cable strip tool, and Double Bubble connectors for series 59 standard through quad-shield, CCTV and Plenum cable to create a superior security installation.



DBSSKIT INCLUDES:

- CPLCRBC-BR Compression Tool
- PSA59/6 Cable Strip Tool
- (10) DB59U
- (10) DB59BNCU
- (10) DB59BNC SL
- (10) DB59BNCPL2/4

Cable Pro® Cable Caddies

Belden Cable Pro Cable Caddies are engineered using high quality, lightweight steel tubing and incorporates a unique folding mechanism. This allows professional installers to easily fold and transport the caddy to each cable installation location. Wheeled versions of the cable caddy are available to make moving from each location a breeze.

CC2016B & CC2016BW Cable Caddy

- Holds one 20" x 16" reel
- Compact unit
- Made of sturdy 3/4" tubing
- CC2016B does not include wheels
- CC2016BW features 6" wheels
- Holds up to 100 lbs.
- Made in the USA



CC2016BW

CC2024 Cable Caddy

- Holds one 20" x 24" reel
- Made of Sturdy 1" tubing
- Features 6" wheels for easy movement
- Holds up to 100 lbs.
- Made in the USA



CC2024

CC2036D Cable Caddy

- Holds a variety of reel combinations
- Adjustable bar heights
- Two simplified ways to load reels
- Made of Sturdy 1" tubing
- Holds up to 100 lbs. per reel
- Made in the USA



CC2036D

Cable Pro® Torque Wrenches

TROE716SH Speed Head Torque Wrench

INDUSTRY USE: CATV • SATELLITE



- "Speed" head for quick tightening without having to remove the wrench from the connector
- Use to tighten 7/16" F-type fittings
- Torque inch/pounds preset at factory (10-60 in./lbs.)
- Medium carbon steel (heat treated) with black oxide finish
- Blue cushioned grip



Black oxide finish provides superior protection

Angled head for easy access

"Speed" head for quick tightening without removing the wrench from connector

TROE716E Easy Open End Torque Wrench

INDUSTRY USE: CATV • SATELLITE



- Available in 7/16" configuration for F-fittings
- Coated with black oxide to offer the ultimate protection against daily wear and tear
- A soft, blue, rubber grip provides a smooth gripping surface
- Torque inch/pounds are preset at the factory based on your specifications from 10-60 in./lbs

TROE716/TROE916 True Torque Open End Torque Wrench

INDUSTRY USE: CATV • SATELLITE



- Available in 7/16" or 9/16" configuration for F-fittings
- Manufactured using chromemoly, a high-quality metal to provide installers with a durable, quality tool
- Ergonomically designed to have a True Torque Grip giving you total control and precision when used
- Torque inch/pounds are preset at the factory based on your specifications from 10-60 in./lbs

Swivel 7/16" Torque Wrench



- Use to torque 7/16" F-type fittings
- Designed to work with multi-part taps
- Torque wrenches are preset in the factory to specified torque in./lbs.

Part Number	Description
TRS716-*	7/16" Torque Wrench
TRS716SS-EX-*	7/16" Torque Wrench removes plastic sleeves
TRS716SS-*	7/16" Torque Wrench removes metal sleeves

Fixed/Swivel 3/8" Socket Drive Torque Wrench



- Ability to use different size sockets
- Torque wrenches are preset in the factory to specified torque in./lbs.

Part Number	Description
TRS3/8	Swivel 3/8" Socket Drive Torque Wrench

Cable Pro® Installation Tools

Belden manufactures a full line of high-quality Cable Pro installation tools for the professional installer.

Can Wrench



- Used to open pedestals and tighten ground straps and taps

Part Number	Description
CNW6	Can Wrench (3/8" & 7/16")
CNW8	Can Wrench (1/2" & 9/16")

Trap Wrench



- Made of lightweight 6061 aluminum
- 2 steel pins, press fitted into the aluminum tube, to remove traps
- Anodized for superior protection and easy identification
- Fits 7/16" hex F-fittings
- Knurled hand grips assure controlled handling

Part Number	Description
TW716	Trap Wrench - Red
TWS716	Super Trap Wrench - Black Hex Head is made of hardened steel
TWC716	Combo Trap Wrench - Blue For Metal Security Sleeves Combines standard trap wrench design with a security sleeve Security socket is made of hardened steel
TWC716-EX	Combo Trap Wrench - Blue For Plastic Security Sleeves Combines standard trap wrench design with a security sleeve Security socket is made of hardened steel

Extended Headend Socket Wrench



- Use in headend or behind rack for installation and removal of 7/16" F-type or BNC fittings
- HT-LBNC dual-end tool is designed for use with Belden HD Brilliance Locking 1-Piece BNC Compression Connectors
- Dual-end tool provides the use of two tools in one making installation quick and easy
- One end of dual-end tool assists with insertion and removal, and the other end "locks-down" the patent-pending locking collar of the Locking BNC Connector
- Dual-end and BNC socket wrenches feature tapered ends to make BNC installations on patch panel ports accessible and easy to manage
- Manufactured from quality materials to provide a long-lasting, durable tool

Part Number	Description
HT-716	Extended Headend F Connector Socket Wrench
HT-BNC	Extended Headend BNC Connector Socket Wrench
HT-LBNC	Extended Headend Belden Brilliance Locking BNC Connector Socket Wrench

Socket extends 8" from handle with (1) 1/4" socket

Gilbert Terminating Tool



- GTT tools are designed to be used with theft proof Gilbert GTP Locking Terminators
- GGT-PPLT combines a Cable Pro PPLT Locking Terminator with a Gilbert GTT Locking Terminator in one tool
- Features solid steel spring ears
- Available in two lengths: 4" and 7"

Part Number	Description
GTT-4	4" Gilbert Terminating Tool
GTT-7	7" Gilbert Terminating Tool
GTT-PPLT-4	4" Cable Pro & Gilbert Terminating Tool
GTT-PPLT-7	7" Cable Pro & Gilbert Terminating Tool

Viewsonics Terminating Tool



- Use with Viewsonics Locking Terminators
- Available in two lengths: 4" and 7"
- Tools are made of zinc plated steel

Part Number	Description
VTT-4	4" Viewsonics Terminating Tool
VTT-7	7" Viewsonics Terminating Tool

Security Wrench



- Made of chrome 4130 steel
- Includes steel spring handle and tightens to 40 in./lbs.

Part Number	Description
SWU716	Universal Security Wrench for metal sleeves
SWU716-EX	Thick Wall Security Sleeve for plastic sleeves
DSW716	Dual Security Wrench combines 7/16" socket for standard F-type fittings, and 1/2" socket for LRC seal nut and Gilbert TAC fittings
SW-SACHS	Sach Security Wrench
MSW716	Mini Security Wrench

Installation Tool



- Tools speed the installation and the removal of drop cable
- Available in 7/16" and 9/16" sizes
- Made from 6061 aluminum and features knurled surfaces, a cable slot, and a hard anodized finish

Part Number	Description
IT716	7/16" Installation Tool
IT916	9/16" Installation Tool

Siamese Stripper



- Siamese strippers separate RG59 and RG6 wisted pair cable, coaxial siamese cable and messenger coaxial cable

Part Number	Description
SS596	RG59 and RG6 Siamese Cable Separator

Telephone Tool



- Tool has a 5/32" hex end to open telephone pedestals and boxes

Part Number	Description
532HEX	Telephone Tool

Flaring and Insertion Tool



- Flaring expands jacket to ease the insertion of connectors on to Plenum, Quad and standard size cables
- Insertion simplifies pushing the connector on to the cable

Part Number	Description
FIT-6	Flaring/ Insertion Tool for RG6 Cable
FIT-59	Flaring/ Insertion Tool for RG59 Cable
FIT-11	Flaring/ Insertion Tool for RG11 Cable
FIT-SL2	Flaring/ Insertion Tool for DB59BNSL-2 Connectors

Pen Toner Continuity Testers



- Convenient, easy-to-store cable tester
- Loud audio tone identifies the line carrying signal
- Viewable DC Short LED
- Designed for RF cable applications
- Ergonomic, rugged anodized brass body
- Battery included

Part Number	Description
CPPT-1	Pen Toner to test and identify terminated F cables
CPPT-2	Pen Toner to test and identify terminated F or BNC cables. Uses AAA battery

Toner Boxes Continuity Testers



- Toner boxes feature loud audio signal
- LED display detects splitters and shorts in cable drops
- Two 9-volt batteries (18 volts) allow for testing longer cable drops

Part Number	Description
TS-18	Toner Set (Buzz Box and Battery Box)

HIP Video Splitters

INDUSTRY USE: CATV • SECURITY • A/V SATELLITE

- 1 GHz and 3 GHz product offerings
- Horizontal and Vertical configurations
 - 2, 3, and 4 port horizontal
 - 2, 3, and 4 port vertical
- >-120 dB RFI Shielding
- Die-cast housing with built-in mounting tabs and integrated grounding lug
- High port to port isolation
- Excellent insertion loss performance



1 GHz Product

- 5 MHz - 1,000 MHz
- Digital or Analog RF Signal Transmission
- CATV, Antenna, A/V or Security Applications

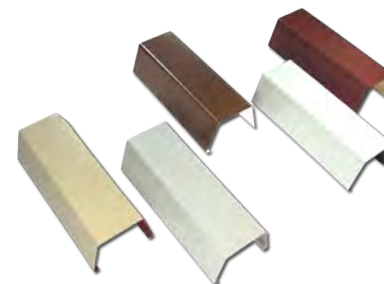
3 GHz Product - Satellite

- 5 MHz - 3,000 MHz
- Digital Satellite RF Signal Transmission
- C Power Passing on 1 port

Passives	HV Horizontal Series 1GHz	HV Series Vertical 1GHz	Satellite Horizontal Series 3 GHz	Satellite Vertical Series 3 GHz
2 Way	HIP 2H	HIP 2V	HIP-S2 H	HIP-S2 V
3 Way	HIP 3H	HIP 3V	HIP-S3 H	HIP-S3 V
4 Way	HIP 4H	HIP 4V	HIP-S4 H	HIP-S4 V

CableReady® Molding System

CableReady® offers a series of protective molding developed to meet the needs of the cabling industry.



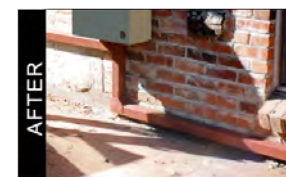
CableReady is an industry leader in developing innovative solutions to the challenges that installers must face when working with cable molding. CableReady molding is available in straight run, transitions, right angles, tee fittings, and much more to ensure a professional solution to any installation.

Our molding is made of 26 gauge Galvalume steel. Galvalume lasts longer and is more durable than G90 hot dipped galvanized steel or plastic molding systems. All CableReady molding products can be used for indoor and outdoor applications.

In the past, system operators, installers and apartment owners have settled for plastic moldings that were difficult to install, re-enter and re-install with an effective product life of only two to three years. Users have had to put up with plastic moldings that would crack, shift, discolor, warp and literally fall off the walls of buildings.

All CableReady products are guaranteed against cracking, peeling, or fading, due to ultraviolet rays or harsh weather conditions for 15 years.

Made in the USA.



ATTACH CLIP



ATTACH CABLES



SNAP ON MOULDING



CableReady molding holds patent numbers: 5,523,529, 5,732,747 and 6,437,247

F-Conn Compression Connector Sizing Chart (Inches)

*Actual cable sizes may vary from manufacturer specifications and testing may be required to verify correct connector fit.

Type	Description	Size	Basic Series	Double Bubble	ProSNS	Gold Series	ProSNS	Gold Splice/Insert
RG1 (24-26AWG*) ORANGE	Center Conductor Dielectric Outer Jacket	MIN-MAX .015-.025 .065-.078 .095-.110		DB1RCA-R	FSRCA1RGB FSBNC1RGB FS1RCA FS1BNC	RGRCA1RGB RGBNC1RGB RG1RCA RG1BNC	FS1RCASST FS1BNCSSST	RG1RCASST RG1BNCSSST
RG15 (22-24AWG*) PURPLE	Center Conductor Dielectric Outer Jacket	MIN-MAX .015-.025 .095-.105 .145-.160		DB15RCA-R	FSRCA15RGB FSBNC15RGB FS15RCA FS15BNC	RGRCA15RGB RGBNC15RGB RG15RCA RG15BNC	FS15RCASST FS15BNCSSST	RG15RCASST RG15BNCSSST
*This AWG is a reference point only please make sure you spec the cable to ensure proper fit.								
RG59 PLENUM RED	Center Conductor Dielectric Outer Jacket	MIN-MAX .0317-.0339 .147-.157 .190-.220			FS59PL FS59BNCPL FS59RCAPL			
RG59 PLENUM 2 RED	Center Conductor Dielectric Outer Jacket	MIN-MAX .0317-.0339 .130-.137 .190-.220		DB59PL2/4 DB59BNCPL2/4 DB59RCAPL2/4	FS59PL2 FS59BNCPL2 FS59RCAPL2			
RG59 PLENUM 3 RED	Center Conductor Dielectric Outer Jacket	MIN-MAX .0210-.0240 .130-.137 .190-.220		DB59PL2/4 DB59BNCPL3 DB59RCAPL3	FS59PL2 FS59BNCPL3 FS59RCAPL3			
RG59 PLENUM 4 RED	Center Conductor Dielectric Outer Jacket	MIN-MAX .0317-.0339 .134-.141 .190-.220		DB59PL2/4 DB59BNCPL2/4 DB59RCAPL2/4	FS59PL4 FS59BNCPL4 FS59RCAPL4			
RG59 SECURITY RED	Center Conductor Dielectric Outer Jacket	MIN-MAX .0317-.0339 .137-.148 .232-.248		DB59BNCSL DB59RCASL	FS59BNCSL			
RG59 STANDARD RED	Center Conductor Dielectric Outer Jacket	MIN-MAX .0317-.0339 .144-.157 .232-.252	RG59WR RG59WRO RG59-RCAWR					
RG59 QUAD RED	Center Conductor Dielectric Outer Jacket	MIN-MAX .0317-.0339 .144-.157 .257-.273	RG59NR					
RG59 UNIVERSAL RED	Center Conductor Dielectric Outer Jacket	MIN-MAX .0317-.0339 .144-.157 .232-.273		DB59U DB59BNCU DB59RCAU	FSNS59U FSNS59BNCU FSNS59RCAU FS59URA FSBNC59URA FSRCA59URA	RG59U RG59BNCU RG59RCAU	FS59US FS59BNCUS FS59RCAUS	RG59US RG59BNCUS RG59RCAUS

Connector/ Cable Cross Reference Chart available at www.belden.com

F-Conn Compression Connector Sizing Chart (Inches)

*Actual cable sizes may vary from manufacturer specifications and testing may be required to verify correct connector size.

Type	Description	Size	Basic Series	Double Bubble	ProSNS	Gold Series	ProSNS	Gold Splice/Insert
RG59/ MINI CENTER CONDUCTOR	Center Conductor Dielectric Outer Jacket	MIN-MAX .021-.024 .144-.157 .232-.273		DB59BNCBU				
RG59 ITS CONNECTOR	Center Conductor Dielectric Outer Jacket	MIN-MAX .024-.034 .190-.200 .295-.305		DB59BNC SL2-M DB59BNC SL2-F				
RG6 PLENUM GREEN	Center Conductor Dielectric Outer Jacket	MIN-MAX .0399-.0418 .183-.193 .220-.250			FS6PL FS6BNCPL FS6RCAPL			
RG6 PLENUM 2 GREEN	Center Conductor Dielectric Outer Jacket	MIN-MAX .0399-.0418 .165-.172 .220-.250		DB6PL2 DB6BNCPL2 DB6RCAPL2	FS6PL2 FS6BNCPL2 DB6RCAPL2			
RG6 STANDARD GREEN	Center Conductor Dielectric Outer Jacket	MIN-MAX .0399-.0418 .180-.193 .265-.286	RG6WR RG6WRO RG6-RCAWR					
RG6 QUAD GREEN	Center Conductor Dielectric Outer Jacket	MIN-MAX .0399-.0418 .180-.193 .289-.305	RG6NR RG6NRO					
RG6 UNIVERSAL GREEN	Center Conductor Dielectric Outer Jacket	MIN-MAX .0399-.0418 .180-.193 .265-.305		DB6U DB6BNCU DB6RCAU	FSNS6U FSNS6BNCU FSNS6RCAU FS6URA FSBNC6URA FSRCA6URA	RG6U RG6BNCU RG6RCAU	FS6US FS6BNCUS FS6RCAUS	RG6US RG6BNCUS RG6RCAUS
RG11 UNIVERSAL BLACK	Center Conductor Dielectric Outer Jacket	MIN-MAX .0634-.0647 .280-.294 .390-.417	F11WR		716SNS1P11H FSNS11HBNC 90SNS1P11H			
RG11 PLENUM GRAY	Center Conductor Dielectric Outer Jacket	MIN-MAX .0634-.0647 .280-.294 .339-.355			716SNS1P11HPLA FSNS11HBNCPLA			
DS3 CONNECTOR	Center Conductor Dielectric Outer Jacket	MIN-MAX .014-.020 .070-.085 .120-.140		DBDS3BNC				
DS4 CONNECTOR	Center Conductor Dielectric Outer Jacket	MIN-MAX .317-.0339 .145-.155 .220-.240		DBDS4BNC				



CCS Memphis
8285 Tournament Drive, Ste. 100
Memphis, TN 38125

Belden Customer Support
1.800.685.9452

**To view our full line of Enterprise Solutions
and Cables please visit www.belden.com**

Belden Product Families

Snap-N-Seal®



*This publication contains the most current products and specifications as of this printing.
Items may be added, deleted, discontinued, or revised without notice. Please contact
Belden to verify product specifications and availability.*