

Single Pole Devices and Temporary Power

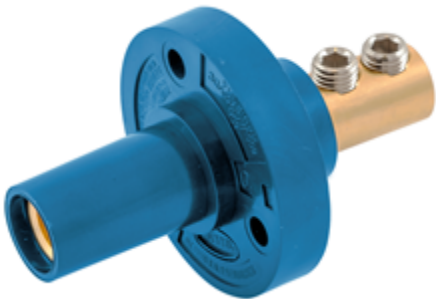
150A, 600V AC/250V DC

Female Receptacles

HUBBELL

Ordering Information

Description	Device Color	UPC	Catalog Number
Double Set Screw type,150A Panel Mount,thermoplastic	Blue	783585458205	HBL15FRBL



Standards

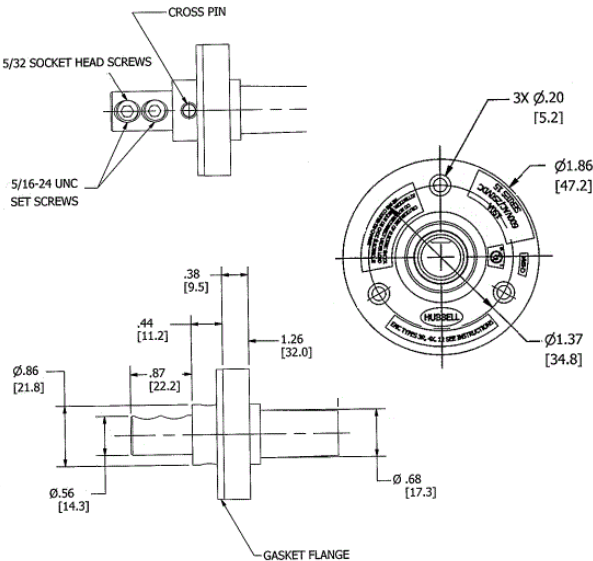
UL and cUL Listed
UL Enclosure Types 3R, 4X, 12
National Electric Code (NEC), ANSI/NFPA 70

Specifications

Base Compound	Thermoplastic Elastomer (TPE)
Contact Material	Brass
Retaining Screw Material	Nylon
Mounting Hole	3x Ø .20"
Termination	(2) 5/32 Socket Head Set Screws

Performance

Electrical	
Amperage Rating	150A Maximum
Voltage Ratings	600V AC Maximum; 250V DC Maximum
Mechanical	
Product Identification	Ratings are a permanent part of device
Terminal Accommodation	#8 to #2 AWG



Online Resources

eCatalog

