

Superbay Ballast Housings



Rugged, two-piece, die-cast aluminum ballast housing with corrosion-resistant Lektrocote® white finish (standard), gray or **environmentally friendly RC - Reclaimed Paint option**. Electrical components are mounted directly to the aluminum housing for cool operation and long life.

SPECIFICATIONS 150-450w

- Fits with any of fifteen different optical systems
- Ballasts are high power factor with 180°C Class H insulation

SPECIFICATIONS 1000w

- Fits with any of four different optical systems
- Ballasts are high power factor with 180°C Class H insulation

LISTINGS

- Superbay ballast housings are certified to UL 1598, CSA 22.2 No. 250.0-00 and tested to 55°C ambient operation (150-450w)
- 1000w Superbay ballast housing is certified to CSA 22.2 (40°C ambient operation)
- Suitable for damp locations

Shown with optional Slick-On mounting. Quick-On is standard except 1000w where Slick-On is standard.

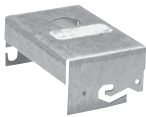
Superbay fixtures made for glass reflectors must have NH or NI designation.

ORDERING INFORMATION: 150-1000w

BLA	-			-		-		-		
SERIES	WATTAGE		SOURCE		OPTIC-READY MOUNT ²		COLOR	SOCKET		
BLA Superbay Series	150	150w HPS only	H	Metal Halide	NB	OU/OU60	WH	White (standard)	EX	Pink exclusionary socket (for open rated lamps)
	175	175w PSMH only	S	High Pressure Sodium	NH	HGE16/HGO16	GR	Gray (optional)		
	200	200w PSMH only	P	Pulse Start Metal Halide	NI	HGE22/HGO22	RC	Reclaimed Paint (optional)		
	250	250w PSMH or HPS								
	320	320w PSMH only								
	350	350w PSMH only								
	400	400w PSMH or HPS								
	450	450w PSMH only								
	1000 ¹	1000w MH, PSMH or HPS								
VOLTAGE										
	5	480V								
	6	Tri-Tap® - 120/277/347V								
	7	600V (isolated secondary only)								
	8	Quad-Tap® (multi-tap) - 120/208/240/277V								
	F	347V (single voltage only)								

- 1 1000w with WA25 optic cannot be enclosed
 2 Required for glass HGE/HGO and OU/OU60 reflectors

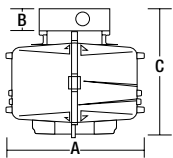
NOTE: Energy-saving linear reactor pulse start ballast available, consult factory (277V only)
 NOTE: Options must be added as suffix to Catalog Number
 NOTE: Accessories must be ordered separately
 For a complete list of **Options and Accessories** see pages 437 to 445.



Quick-On® Bracket Pendant Mount
(shipped standard)



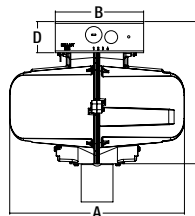
Slick-On® Bracket Pendant, Ceiling, Through-Wire Mounting
(shipped optional 150-450w, standard on 1000w)



150-450 & 750w

Quick-On®	A	B	C
	9 1/2"	1 1/8"	8 5/8"
	241 mm	29 mm	219 mm

Slick-On®	A	B	C
	9 1/2"	2"	9 1/2"
	241 mm	51 mm	241 mm



1000w

Slick-On®	A	B	C	D
	11 7/8"	6"	9 11/16"	2 1/8"
	301.6 mm	152.4 mm	246.2 mm	53.9 mm



ECOBAY™/Superbay Optics

ORDERING INFORMATION: BL OPTICAL ASSEMBLY MODULES

Catalog Number	Description	Diameter	Weight lbs. (kg)
BL-AL ¹	19" Aisle lighter reflector	19"	2.5 (1.1)
BL-BI ²	14" Highbay reflector	14"	1.75 (0.8)
BL-EG	19" Enclosed and gasketed reflector	19"	6.75 (3.1)
BL-LB1	23" Lowbay reflector/refractor	23"	8.25 (3.7)
BL-PA2 ³	16" Prismatic acrylic reflector	16"	3 (1.4)
BL-SD ¹	19" Highbay downlight reflector	19"	2.25 (1)
BL-SU ¹	19" Highbay reflector with uplight	19"	2.25 (1)
BL-OU60 ⁶	23" Highbay reflector	23"	5.0 (2.2)
BL-WA25 ⁵	25" Prismatic acrylic reflector	25"	8.25 (3.7)
CH-SW	Superwatt® optics	22"	10 (4.5)
CH-LM	29" Lowbay reflector/refractor	29"	10.75 (4.9)
BL-WA22 ⁴	22" Clear prismatic acrylic reflector	22"	6.5 (3)
BL-WW22 ⁴	22" Opaque prismatic acrylic reflector	22"	6.5 (3)

- Requires BL-LR19 when used with "E" or "S" rated lamps
- Requires BL-LR-14 when used with "E" or "S" rated lamps
- Requires BL-PK_ENC when used with "E" or "S" rated lamps
- Requires WA2-ENC, WA22-CDL, WA22-DLR when used with "E" or "S" rated lamps. If used with 400w, reduces thermal listing to 40°C
- Requires WA25-DLR when used with "E" or "S" rated lamps; No bottom enclosures allowed with 1000w lamps
- Requires CH-ENC-23 when used with "E" or "S" rated lamps

Glass Highbay Units

BL-150S8-HGX-16-WH ¹
BL-250S8-HGX-16-WH ¹
BL-320P8-HGX-16-WH ¹
BL-350P8-HGX-16-WH ¹
BL-400S8-HGX-16-WH ¹
BL-400P8-HGX-16-WH ¹
BL-150S8-HGX-22-WH ¹
BL-250S8-HGX-22-WH ¹
BL-320P8-HGX-22-WH ¹
BL-350P8-HGX-22-WH ¹
BL-400S8-HGX-22-WH ¹
BL-400P8-HGX-22-WH ¹
HG-ENC-22 ²
HG-ENC-16 ²

- Replace "X" with "O" for open or "E" for enclosed
- "ENC" required for totally enclosed optics

HG016
HGE16



HG022
HGE22



HGX16 and HGX22 require a special ballast housing

BL-OU60



BL-AL



BL-BI



BL-PA2



BL-SD



BL-SU



BL-EG



BL-LB1



BL-WA25



CH-SW



CH-LM



BL-WA22



BL-WW22



Industrial Lighting