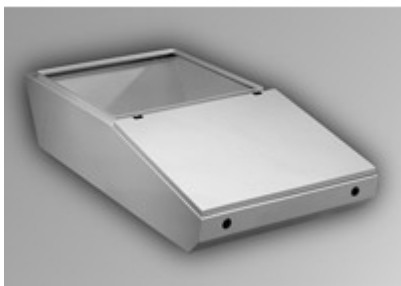




*Quality Products. Service Excellence.*

## Type 4, 4X Mild Steel and Stainless Steel Desk Units *Series 2000*

Modular Console System



### Application

- Generally used in combination with other modular console components (ie. base, pedestal, and/or turret).
- Provides an ideal sloped surface for mounting keyboards, switches, indicator lights, and/or dials.
- Open top permits mounting of a turret (usually for CRT applications) or an optional hinged desk cover (providing a flat, sturdy desk surface).
- Available in either Standard (will support Standard Turret only) or Deep (will support Deep Turret only) format.
- Smooth lines and clean edges provide an attractive, contemporary appearance.



### Standards

- UL 508A Type 3R, 4,12
- CSA Type 3R, 4, 12, 13
- EIA RS-310-D
- Complies with
  - NEMA Type 3R, 4, 12
  - IEC 60529, IP66

### Construction

- UL 508 Type 3R, 4, 4X, 12
- CSA Type 3R, 4, 4X, 12
- Complies with
  - NEMA Type 3R, 4, 4X, 12
  - IEC 60529, IP66

### Finish

- Formed 14 gauge steel bodies with 14 gauge steel lid.
- Also offered with formed 14 gauge 304 stainless steel bodies with 14 gauge 304 stainless steel lid.
- Smooth, continuously welded seams without knockouts or holes.
- Body stiffeners are provided where required for increased strength and rigidity.
- Offered in 4 widths 24", 36", 48" and 60".
- Solid sides and back, lid on sloped top area, open on flat top area, bottom is solid under lid area and open under flat top area.
- Deep Desk has a 6.7" deeper top opening than standard desk allowing for support of Deep Turret - see drawings as Deep Desk has different profile (angled back) from Standard Desk (flat back.)
- Lid profiles provide increased strength.
- Formed lip on enclosure excludes flowing liquids and contaminants.
- Slotted quarter turn oil-tight latches secure the lid, with optional tamper resistant and locking latches available.
- Stainless steel models utilize stainless steel hardware.
- Oil resistant gaskets are permanently secured.



- Features several internal stud locations for mounting Desk Inner Panel.
- A bonding screw is provided on the lid and a grounding stud is provided in the enclosure.

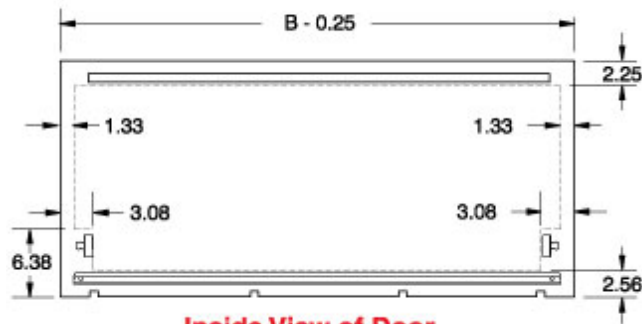
### Accessories

- Available in RAL 7035 light gray textured powder coating and natural stainless steel with a smooth, brushed finish.
- Desk covers available in same finishes.

### Accessories

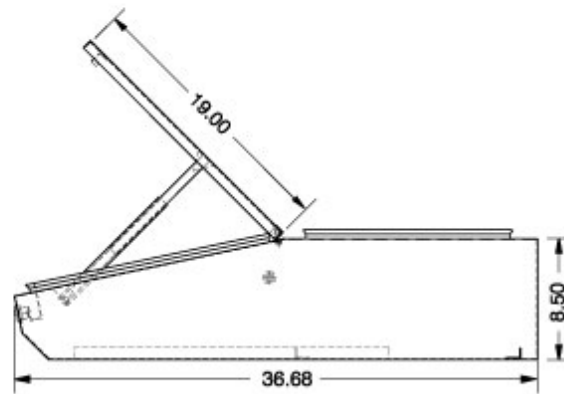
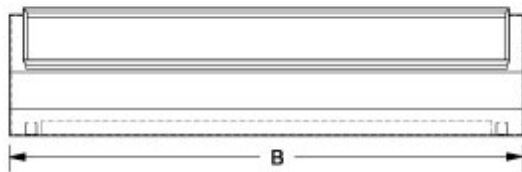
- Desk Cover
- Desk Inner Panel
- Ground Wire Kits

#### Standard Desk Unit

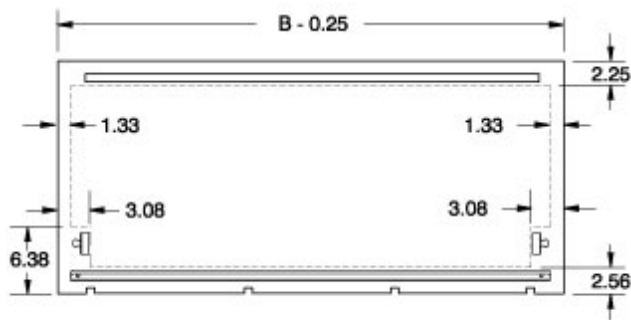


#### Inside View of Door

Clearance area for mounting hardware on desk unit sloping door

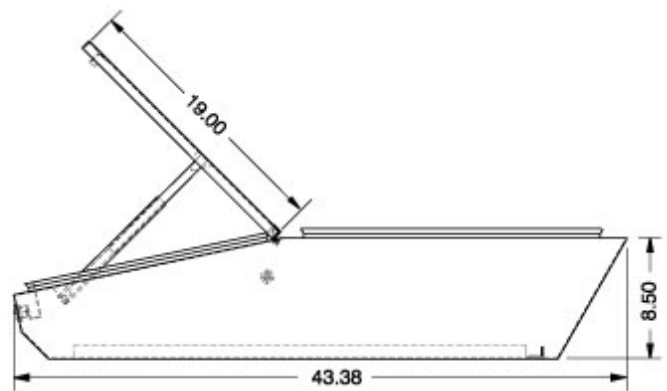
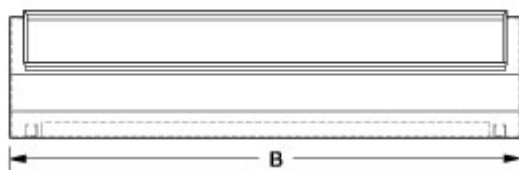


#### Deep Desk Unit



#### Inside View of Door

Clearance area for mounting hardware on desk unit sloping door



RAL 7035 Light Gray		Stainless Steel	
Part No.	Part No.	B	
2CLD82436	2CSD82436	24.00	
2CLD83636	2CSD83636	36.00	
2CLD84836	2CSD84836	48.00	
2CLD86036	2CSD86036	60.00	

RAL 7035 Light Gray		Stainless Steel	
Part No.	Part No.	B	
2CLD82443	2CSD82443	24.00	
2CLD83643	2CSD83643	36.00	
2CLD84843	2CSD84843	48.00	
2CLD86043	2CSD86043	60.00	

*Data subject to change without notice*

© 2017. Hammond Manufacturing Ltd. All rights reserved.