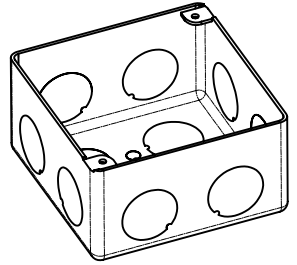
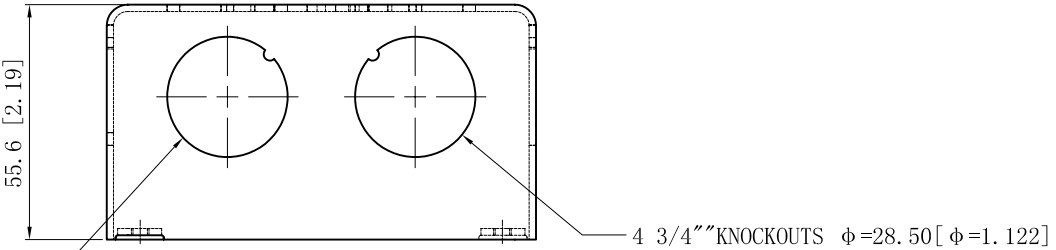


SIDES	BOTTOM
8 3/4" KNOCKOUTS	6 KNOCKOUTS
	3 1/2" KNOCKOUTS
	2 3/4" KNOCKOUTS
Material: Steel-0.0625"-G60 Galvanized	

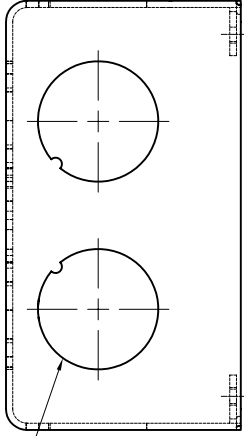


2 3/4" KNOCKOUTS $\phi=28.50$ [$\phi=1.122$]

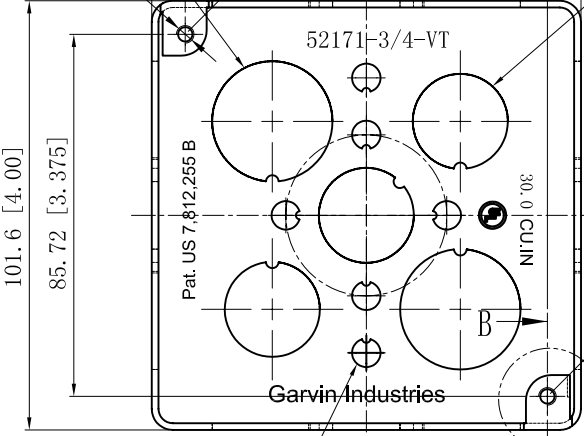
2-#8-32 UNC HOLE

101.6 [4.00]
85.72 [3.375]

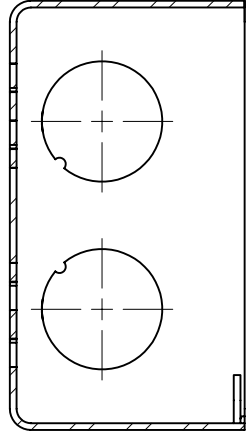
3 1/2" KNOCKOUTS $\phi=22.50$ [$\phi=0.886$]



4 3/4" KNOCKOUTS $\phi=28.50$ [$\phi=1.122$]



6 KNOCKOUTS $\phi=6.75$ [$\phi=0.27$]



CUTAWAY VIEW A-A

This data sheet is for reference only. GARVIN INDUSTRIES reserves the right to make changes to the design without prior notice.

DESCRIPTION
Patent #: Pat. US 7,812,255 B
TRADE REFERENCE TERMS

STANDARD PACKING
25 PCS

GARVIN INDUSTRIES		
4" SQUARE BOXES 2-1/8" DEEP		
SIZE A4	DWG NO. 52171-3/4-VT	REV G
DATA SHEET		