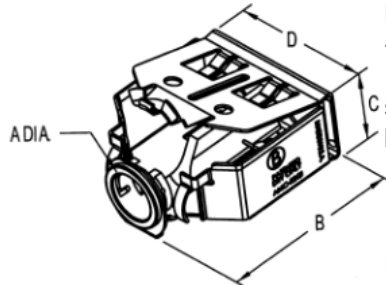
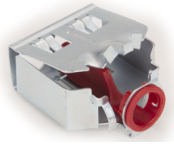


EZ Lock - Connector - Steel

Images



Application

Bridgeport's EZ Lock AMC-52QI is used to connect 2 14/2 - 10/2 (.43" - .59") AC/MC/MCI-A/HCF cables and 3/8" FMC to box or enclosure. No Tools Required Just squeeze to insert into the 1/2" K.O Use with an anti-short bushing. .375" Throat Opening. Great for lighting whips!

Product Information

Material: Steel
Finish: Zinc Plated

Certifications & Codes:

Federal Specification Number: A-A-50553
NEMA Standard: FB-1
UL File Number: cETLus Listed
UL Standard: UL-514B
UNSPSC: 39121419
Patent Number: 9,640,966

[Download Photo Image](#)

[Download Dimensional Image](#)

Dimension A in Inches: .560
Dimension B in Inches: 2.130
Dimension C in Inches: .870
Dimension D in Inches: 1.870

Catalog ID: AMC-52QI

UPC Number: 78174721580

Description: Connector, Duplex, E-Z Lock, Steel, .375 Inch Throat Opening, No Tools Required! Quick Install! Patented

Application: Bridgeport's EZ Lock AMC-52QI is used to connect 2 14/2 - 10/2 (.43" - .59") AC/MC/MCI-A/HCF cables and 3/8" FMC to box or enclosure. No Tools Required Just squeeze to insert into the 1/2" K.O Use with an anti-short bushing. .375" Throat Opening. Great for lighting whips!

Trade Size: 3/8"

Std Pkg Qty: 250

Unit Qty: 25