

# Raintight Conduit Hubs

Threaded for Rigid Conduit & IMC

## Type CHM & Type CHM-T

### Use:

Type CHM - General Purpose Fitting.  
Type CHM-T - Insulated Throat form with Bonding Locknut.

### Features:

- Male thread type
- Tapered female thread for rigid conduit and IMC
- Recessed O-ring seal assures watertight and dust tight connections
- Type CHM-T with insulated throat and bonding locknut is suitable for service entrance application

### Material/Finish:

Malleable Iron/Zinc Electroplated

### Optional Finish:

For additional corrosion protection, specify Mechanically Galvanized  
Contact your local representative for pricing and availability.

### Third Party Certification:



UL Listed: 11853  
UL Listed as suitable for wet locations.



CSA Certified: 009795  
Raintight.  
Suitable for use in hazardous locations as follows:  
Class I, Div. 2  
Class II, Div. 1, 2  
Class III, Div. 1, 2  
Per NEC 501-4(b), 502-4(a), 503-3(a)

### Applicable Third Party Standards:

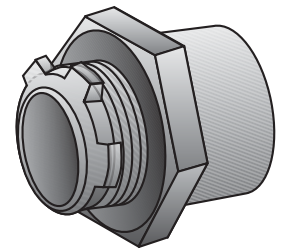
UL Standard: 514B  
CSA Standard: C22.2 No. 18  
Fed. Spec: W-F-408E

- NEMA: FB-1
- NEMA: 4
- NEMA: 12

### Note:

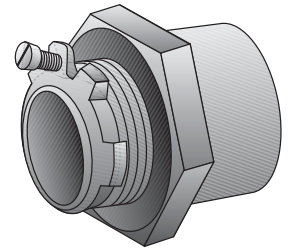
Minimum wall thickness that can be accommodated is  $\frac{1}{32}$ ".

Trade Size (inches)	Catalog Number	Dimensions in Inches					Max. Box Wall Thk.
		A	B	C	D Female Tapered N.P.T.		
$\frac{1}{2}$	CHM-50	$\frac{7}{8}$	$1\frac{1}{2}$	$\frac{1}{2}$	$\frac{1}{2}$ - 14	$\frac{5}{16}$	
$\frac{3}{4}$	CHM-75	1	$1\frac{3}{4}$	$\frac{1}{2}$	$\frac{3}{4}$ - 14	$\frac{3}{8}$	
1	CHM-100	$1\frac{1}{8}$	2	$\frac{5}{8}$	1 - 11 $\frac{1}{2}$	$\frac{7}{16}$	
$1\frac{1}{4}$	CHM-125	$1\frac{1}{4}$	$2\frac{3}{8}$	$\frac{5}{8}$	$1\frac{1}{4}$ - 11 $\frac{1}{2}$	$\frac{19}{32}$	
$1\frac{1}{2}$	CHM-150	$1\frac{1}{4}$	$2\frac{3}{4}$	$\frac{5}{8}$	$1\frac{1}{2}$ - 11 $\frac{1}{2}$	$\frac{19}{32}$	
2	CHM-200	$1\frac{1}{4}$	$3\frac{1}{4}$	$\frac{3}{4}$	2 - 11 $\frac{1}{2}$	$\frac{1}{2}$	
$2\frac{1}{2}$	CHM-250	$1\frac{1}{8}$	$3\frac{3}{8}$	1	2 $\frac{1}{2}$ - 8	$\frac{9}{16}$	
3	CHM-300	$1\frac{3}{4}$	$4\frac{5}{8}$	1	3 - 8	$\frac{5}{8}$	
$3\frac{1}{2}$	CHM-350	$1\frac{1}{8}$	$5\frac{1}{8}$	$1\frac{1}{8}$	3 $\frac{1}{2}$ - 8	$\frac{5}{8}$	
4	CHM-400	$1\frac{1}{8}$	$5\frac{5}{8}$	$1\frac{1}{8}$	4 - 8	$\frac{11}{16}$	
5	CHM-500	$2\frac{1}{8}$	$6\frac{3}{8}$	$1\frac{1}{4}$	5 - 8	$\frac{11}{16}$	
6	CHM-600	$2\frac{1}{8}$	$8\frac{1}{8}$	$1\frac{1}{4}$	6 - 8	$\frac{11}{16}$	



Type CHM

Trade Size (inches)	Insulated Throat Catalog Number	Dimensions in Inches					Max. Box Wall Thk.
		A	B	C	D Female Tapered N.P.T.		
$\frac{1}{2}$	CHM-50T	$\frac{7}{8}$	$1\frac{1}{2}$	$\frac{1}{2}$	$\frac{1}{2}$ - 14	$\frac{7}{32}$	
$\frac{3}{4}$	CHM-75T	1	$1\frac{3}{4}$	$\frac{1}{2}$	$\frac{3}{4}$ - 14	$\frac{9}{32}$	
1	CHM-100T	$1\frac{1}{8}$	2	$\frac{5}{8}$	1 - 11 $\frac{1}{2}$	$\frac{11}{32}$	
$1\frac{1}{4}$	CHM-125T	$1\frac{1}{4}$	$2\frac{3}{8}$	$\frac{5}{8}$	$1\frac{1}{4}$ - 11 $\frac{1}{2}$	$\frac{19}{32}$	
$1\frac{1}{2}$	CHM-150T	$1\frac{1}{4}$	$2\frac{3}{4}$	$\frac{5}{8}$	$1\frac{1}{2}$ - 11 $\frac{1}{2}$	$\frac{19}{32}$	
2	CHM-200T	$1\frac{1}{4}$	$3\frac{1}{4}$	$\frac{3}{4}$	2 - 11 $\frac{1}{2}$	$\frac{1}{2}$	
$2\frac{1}{2}$	CHM-250T	$1\frac{1}{8}$	$3\frac{3}{8}$	1	2 $\frac{1}{2}$ - 8	$\frac{21}{32}$	
3	CHM-300T	$1\frac{3}{4}$	$4\frac{5}{8}$	1	3 - 8	$\frac{11}{16}$	
$3\frac{1}{2}$	CHM-350T	$1\frac{1}{8}$	$5\frac{1}{8}$	$1\frac{1}{8}$	3 $\frac{1}{2}$ - 8	$\frac{3}{4}$	
4	CHM-400T	$1\frac{1}{8}$	$5\frac{5}{8}$	$1\frac{1}{8}$	4 - 8	$\frac{19}{16}$	
5	CHM-500T	$2\frac{1}{8}$	$6\frac{3}{8}$	$1\frac{1}{4}$	5 - 8	$\frac{19}{16}$	
6	CHM-600T	$2\frac{1}{8}$	$8\frac{1}{8}$	$1\frac{1}{4}$	6 - 8	$\frac{19}{16}$	



Type CHM-T

